

CÍRCULO

CHRISTMAS

SPECIAL E-BOOK

2  unique
size-inclusive
patterns for your
entire family
and your best
friend!





CHRISTMAS

IS FULL OF

BEAUTIFUL TRADITIONS

Whether it's a Secret Santa game or a special dish served at Christmas dinner, this holiday is well-known for small actions that delight generations.

And one of our favorites is the themed sweater worn by the whole family. In addition to creating beautiful shared memories, tradition brings all the love of the handmade pieces to this very special date.

And thinking of inspiring you, we developed the Christmas Special E-book! In this material, you will find two exclusive patterns – an adult sweater and a pet outfit. The two pieces are size-inclusive to dress the whole family.

Remember to share your work with us on social media.

We love to see everything you do!

Use [#circuloyarns](#)





USE YOUR CREATIVITY

to make your projects even more special!

In addition to replicating these e-book garments, there is another way to put a little more of your style and your family's personality into your pieces. Want to know how?

Check out the tips we've carefully selected!



The yarns used in the patterns have an incredible color palette. There are beautiful options for you to explore and find the combination that suits you best.







How about trying other classic Christmas combinations? Go beyond red with green and go bold with the sophisticated combinations of red and white or the festive green and gold option.



Changing the colors indicated in the pattern is also a very valid form of adaptation. For example, if the original pattern uses a teal color, you can replace it with a lighter or darker shade.

Apply these tips and celebrate Christmas as a family with a unique garment. And the best of all, it reflects the whole personality of your family!





CHRISTMAS SWEATER

CHRISTMAS SWEATER

knitter: Marcos Filho

Sizes

S: 38½" sweater
circunference, suitable
to people up to 36" bust
circunference

M: 43" sweater
circunference, suitable
to people up to 41" bust
circunference

L: 52" sweater
circunference, suitable to
people up to 49½" bust
circunference

Instructions for sizes M
and L are shown between
brackets.

Materials

Círculo yarns – La Belle –
4 (5, 6) skeins color #8952
(Fencing), 1 skein each:
colors #8001 (White), #5368
(Pine Tree), #3583 (Indiana),
#2829 (Archipelago).

Círculo circular needles
– nr. 8, 16" long; nr. 8, 32"
long; nr. 10, 16" long; nr 10,
32"long.

Some scrap yarn to hold
stitches. Tapestry needle to
hide ends.

Gauge: 15 st and 20 rows in
4 inches.

Abbreviations

BM: beginning marker,
different from others
k2tog: knit 2 stitches
together

kfb: knit the stitch front
and back

LH: left-hand

LLI: left-leaning increase:
in RS rows/rounds: pick
up the left strand of the
previous-row stitch under
RH-nd st, put it in LH-nd,
k1; in WS rows: pick up the
left strand of previous-row
stitch under RH-nd st, put
it in LH-nd, p1

nd: needle

M: marker, put marker, pass
marker

p2togb: pass 1 st as if to
knit; pass the next st as if to
knit; put both back in LH-
nd and purl them together
through the back loop

rep: repeat, repetition

RLL: right-leaning increase:
RS rows/rounds: pick up the
right strand of the stitch
from previous row, put it in
LH-nd, k1; in WS rows: pick
up the right strand of the
stitch from previous row,
put it in LH-nd, p1

RH: right-hand

RS: right side

st: stitch

ssk: slip one stitch as to
knit, slip another stitch as
to knit, insert LH nd into
front strands of both st,
knit them together.

WS: wrong side

yo: yarn over

Short rows: There are
different methods to stop

working a row, turning and
going back without holes.
Here the yo method is
used, but you can use W&T
or any other method you
prefer.

Neck

With Fencing yarn and
nr8/16" nd, cast on 60 (64,
64) st. Join (taking care
to not twist the stitches).
Insert BM into RH-nd. Make
8 rounds (1¾") in 2/2 cable
(*k2, p2, repeat from *).
Note: Rounds begin at back
center.

Yoke

Change to nr. 10/16" needle.
Note: Change to longer
nr10 needle when needed.
You can pull out a cable
loop ("magic loop") at the
beginning of the rounds
until the stitches fill the
needle.

Setup round, size S: k8
[back], M, k11, [sleeve], M,
k23 [front], M, k11, [sleeve],
M, k7 [back].

Setup round, size M: k1,
kfb, k6 [back], M, k6, kfb,
k5 [sleeve], M, k12, kfb,
k11 [front], M, k6, kfb, k5
[sleeve], M, k8 [back].

Setup round, size L: k2, kfb,
k2, kfb, k2 [back], M, k3, kfb,
k2, kfb, k2, kfb, k2 [sleeve],
M, k6, kfb, k5, kfb, k5, kfb,
k5 [front], M, k3, kfb, k2, kfb,
k2, kfb, k2 [sleeve], M, k3,

kfb, k4 [back].

Short rows:

Row 1 (RS): k to 2 st before next M, RLI, k2, M, k2, LLI, 0 (1, 2) k, turn the work.

Row 2 (WS): yo, p to BM, p to 2 st before next M, RLI, p2, M, p2, LLI, 0 (1, 2) p, turn the work.

Row 3: yo, k to BM, k to 2 st before next M, RLI, k2, M, k2, LLI, k to last st before yo, k2tog (next st + yo), k1, turn the work.

Row 4: yo, p to BM, p to 2 st before next M, RLI, p2, M, p2, LLI, p to last st before yo, p2togb (yo + next st), p1, turn the work.

Repeat rows 3 and 4 twice more.

Row 9: yo, k to BM, k to 2 st before next M, RLI, k2, M, k2, LLI, k to last st before yo, k2tog, k0 (k1), RLI, k2, M, k2, LLI, 0 (1, 2) k, turn the work.

Row 10: yo, p to BM, p to 2 st before next M, RLI, p2, M, p2, LLI, p to last st before yo, p2togb, p0 (p1), RLI, p2, M, p2, LLI, 0 (1, 2) p, turn the work.

Row 11: yo, k to BM, *k to 2 st before next M, RLI, k2, M, k2, LLI, rep from *, k to last st before yo, k2tog, k1, turn the work.

Row 12: yo, p to BM, *p to 2 st before next M, RLI, p2, M, p2, LLI, rep from *, p to last st before yo, p2togb, p1, turn the work.

Repeat rows 11 and 12 once more.

Now, you'll work in rounds. Round 15: yo, k to BM, *k to 2 st before next M, RLI, k2, M, k2, LLI, rep from *, k to last st before yo, k2tog, k to 1st before next yo, ssk (next st + yo), #k to 2 st before next M, RLI, k2, M, k2, LLI, repeat from # twice more, k to BM.

Round 16: k.

Round 17: *k to 2 st before next M, RLI, k2, M, k2, LLI, rep from * three more times, k to BM.

Repeat rounds 16 and 17 1 (4, 6) more times. 33 (41, 49) st in front and back, 25 (33, 41) st each sleeve.

Round 20 (26): Follow chart 1. It shows stitches from M to M. Rounds begin at the thicker vertical line. On even-numbered rounds, keep raglan increases as for round 16. At the end of the chart, there will be 55 (63, 71) st both in the front and the back, 47 (55, 63) st in each sleeve.

Body

Follow chart 2. In the first round (all white) you'll separate body and sleeves. Separation round: *k to M. Remove M. Put first-sleeve stitches in a piece of scrap yarn. Remove second M. Cast on 9 st for underarm. Repeat from *. K to BM. 128 (144, 160) stitches for the body, 47 (55, 63) st held in scrap yarn for each sleeve. Work in stranded

stockinette following chart 2. Then, make 16 (20, 24) rounds with Fencing yarn. Change to nr. 8 needle. Make 8 rounds in 2/2 cable. Cast off.

Sleeves

Put the sleeve stitches on nr. 10/32"-long needles. Use two magic loops to knit in rounds. You can also use same-size dpn's if you prefer.

First round of chart 3: With white yarn, pick up and knit 5 st from the center of underarm; k all sleeve st; pick up and knit 4 st up to the center of underarm. 56 (64, 72) st.

Next 3 rounds: Follow chart 3.

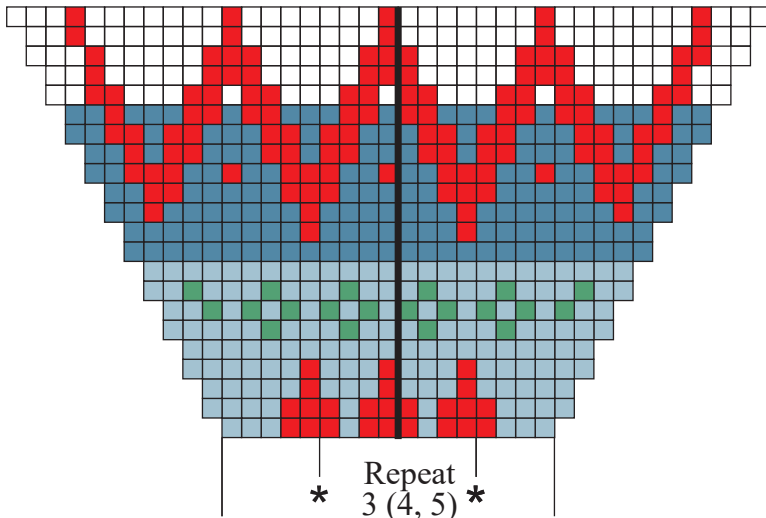
4th round: k1, k2tog, follow chart until 3 st to end, ssk, k1.

Repeat these 4 rounds to the end of chart.

Then, with Fencing yarn, work 35 rounds or until 2 inches to desired arm length, decreasing each 4th round. The final number of stitches has to be multiple of 4, but not smaller than 24. If needed, stop decreasing when you reach the desired wrist size. Change to nr 8 needles and make 10 rounds of 2/2 cable st (2"). Bind off.

Repeat for the other sleeve. Hide all yarn ends.

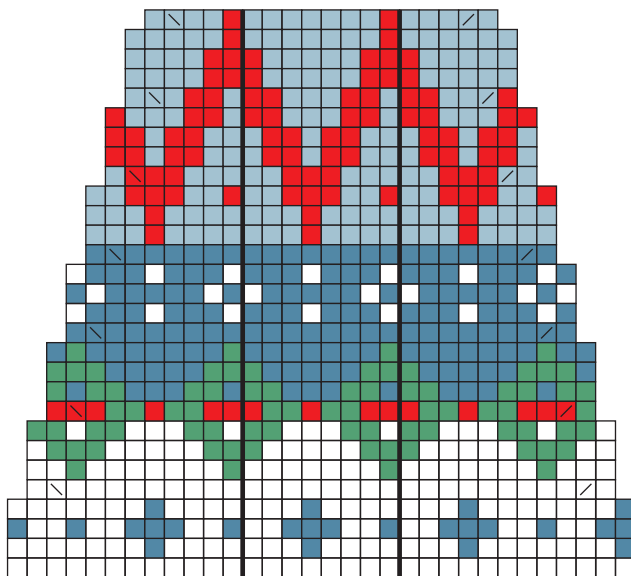
Chart 1



* Repeat
3 (4, 5) *
times
at front
and back,
2 (3, 4) times
at sleeves

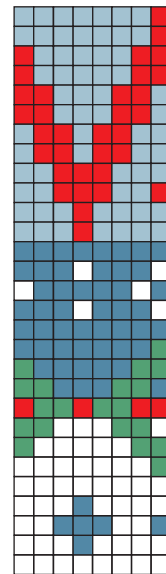
- Caption
- = Fencing
 - = Archipelago
 - = Pine Tree
 - = Indiana
 - = white
 - / = k2tog
 - \ = ssk

Chart 3

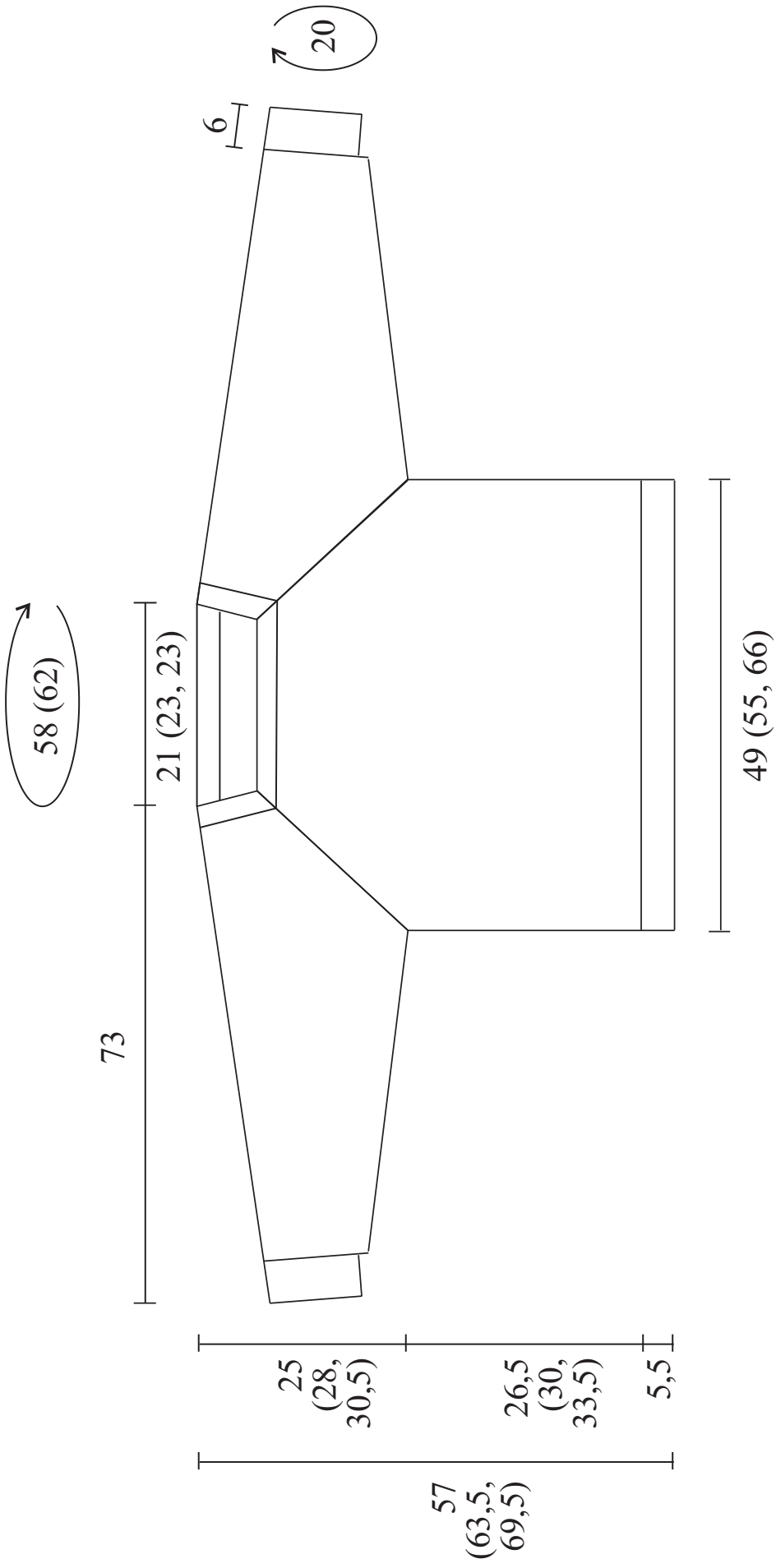


Repeat
3 (4, 5) times
at sleeves

Chart 2



Repeat
16 (18, 20)
times
at body





CHRISTMAS SWEATER
FOR PETS

CHRISTMAS SWEATER FOR PETS

Knitter: Joseli Drigo

For Small to Medium Dogs.

Material

1 skein La Belle - color:
#8001 (White)

1 skein La Belle - color:
#5368 (Pine Tree)

1 skein La Belle - color:
#3583 (Indiana)

1 pair of Circulo straight
knitting needles nr 7

1 pair of Circulo straight
knitting needles nr 9

A set of nr. 7 dpns

Waste yarn or 3 stitch
holders

Gauge: 16 st and 20 rows in
4"

Abbreviations

BO: bind off

CO: cast on

EOR: end of round/row

k: knit

k2tog: knit 2 stitches
together

M1: increase: Lift the strand
between needles with left
needle, from the front to
the back of the knitting.

Knit this strand through
the back loop to twist the
stitch and prevent holes.

nd: needle

nr: number

p: purl

RS: right side

st: stitch

WS: wrong side

Collar

With nr 7 needles and red
yarn, CO 54 st. Work 22
rows in 1×1 rib (k1, p1).

Body

Change to nr 9 needles.
Colorwork: Follow chart 1.
Repeat chart to EOR.

Row 1: k1, *k2, M1, repeat
from *, k1 (80 st).

At the end of Chart 1, begin
Chart 2 and separate for leg
hole: 16 st, 48 st, 16 st.

Row 21: Repeat Chart 2
twice for 16 st, turn the
work; work all Chart 2 rows
in these 16 st. Put these
stitches on hold in waste
yarn or stitch holder.

Return to Row 21: Repeat
Chart 2 six times for 48
st, turn the work; work all
Chart 2 rows in these 48
st. Put these stitches on
hold in waste yarn or stitch
holder.

Return to Row 21: Repeat
Chart 2 twice for 16 st, turn
the work; work all Chart 2
rows in these 16 st.

Now put all stitches in the
same needle and follow
Chart 3 working all 80
stitches.

Row 61: BO 5 st, *k1 white, k1
green, repeat from * to 6 st
to EOR, k6 in green.

Row 62: With green yarn,
BO 5 st, p to EOR.

Row 63: With white yarn:
k2, ssk, k to 4 st to EOR,
k2tog, k2.

Row 64: p in green.

Now repeat rows 63 and 64
five times with green yarn
only.

Row 75: k2, ssk, *k1, p1,
repeat from * to 4 st to
EOR, k2tog, k2.

Row 76: work all stitches as
they appear.

Row 77: k2, ssk, *p1, k1,
repeat from * to 4 st to
EOR, k2tog, k2.

Row 78: bind off.

Legs

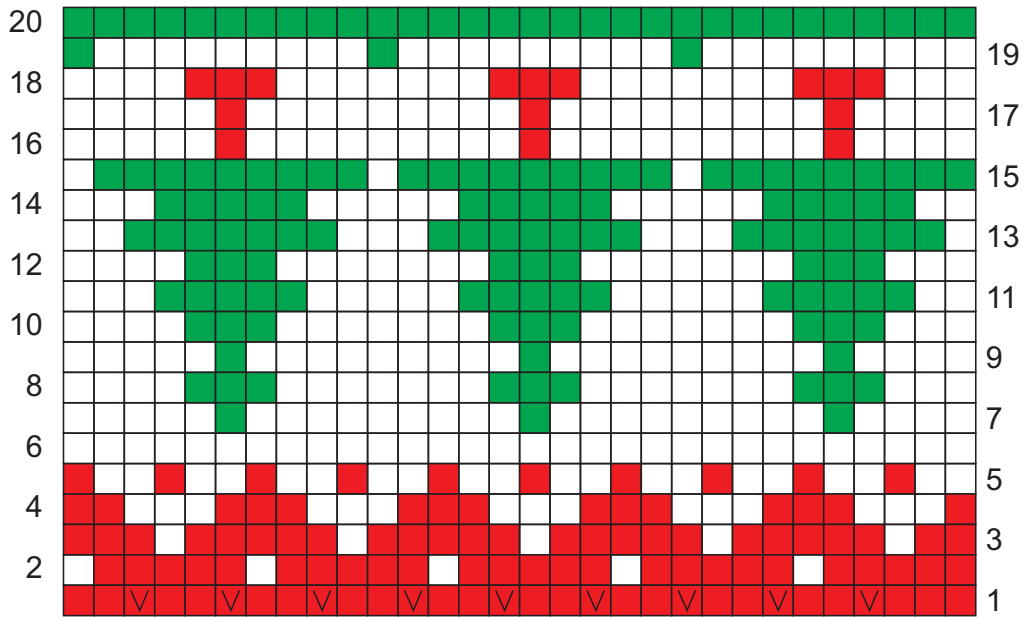
With nr 7 dpns and red
yarn, pick up and knit 42
stitches. Work 12 rounds in
1×1 rib. Make 1 round of 1×1
rib in green, 1 round in red
and BO.

Make the other leg the
same way.

Sew body underside; don't
sew the collar.

Hide yarn ends.

Chart 1



V = M1

Chart 2

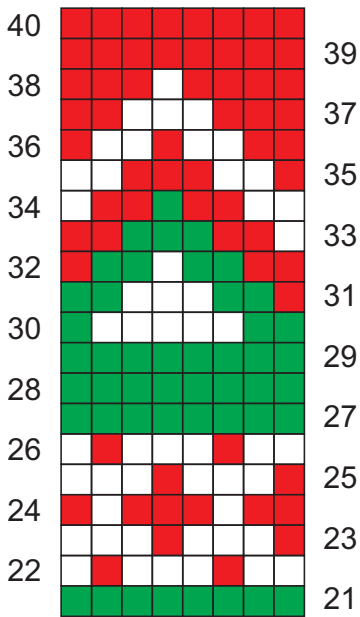
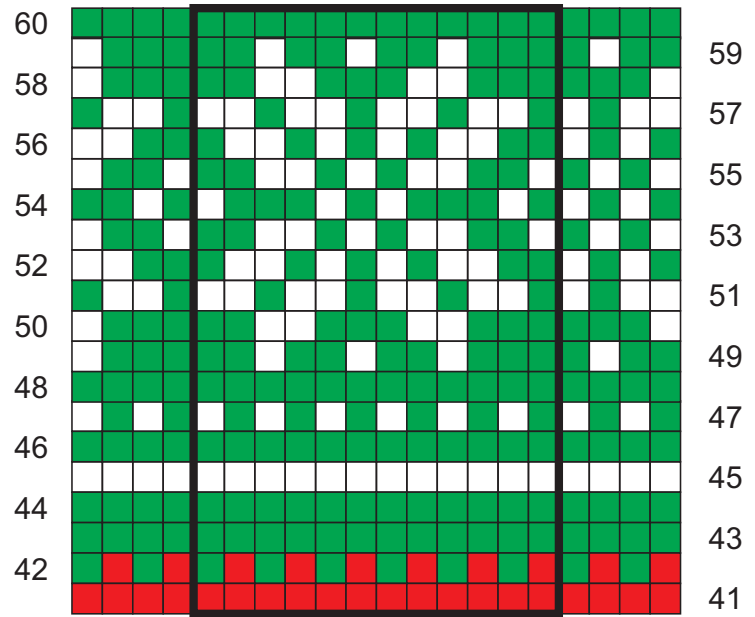
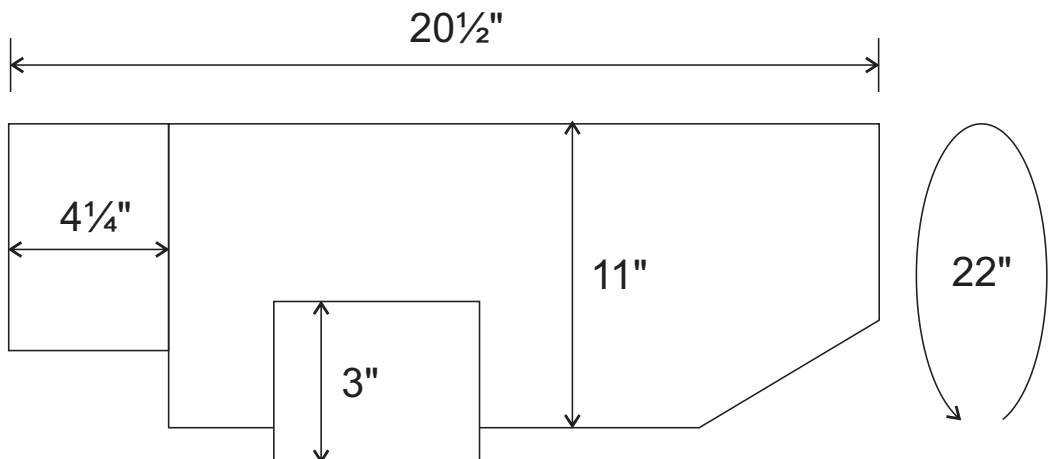


Chart 3



Repeat 6 times



CIRCULO

circuloyarns.com

  [circulo.usa](https://www.instagram.com/circulo.usa)

