
4TH OF JULY

— E - B O O K —



CÍRCULO



Celebrate 4th of July with the best
that handmade can offer!

Decorations and clothes fill the
streets and houses to show the
way we say how we love and
honor the nation.

That's why we've gathered two
passions that transcend generations—
arts and crafts and the pride of being
a patriot!

7 exclusive pieces for you to celebrate
the 4th of July in style, which this
date so meaningfully deserves.

Get inspired and start getting ready
for this big day, but don't forget to
share your creations with us on social
media.

We love seeing everything you make!!

Disclaimer: Measurements are approximate due to
differences between centimeters and inches, needle sizes,
and tension. All care has been taken to allow accurate
completion of the pattern.

All care has been taken to ensure the accuracy of our
patterns; the occasional error is inevitable though. We
apologize for any inconvenience. Please if you find any
error or have any questions about patterns send an email
to: patternsupport@circulo.com.br

USA PILLOW



USA PILLOW

Created by Circulo studio

Size: 22" x 10.25"

Level: Intermediate

Material

Circulo yarns - Natural Cotton Maxcolor 4/6

1 ball each color: #8001 white, #3402 circulo red, and #2856 navy.

Crochet hook E-4.

1 pillow insert or polyester stuffing.

Tapestry needle

Scissors.

Stitch glossary and abbreviations

stitch: st

make: mk

skip: sk

chain: ch

slip st: sl st

single crochet: sc

end of row/rnd: eor.

Tapestry crochet

According to the tapestry crochet technique, you work with 2 strands of yarn in each row, switching colors according to chart. Work one color at a time, while keeping the other colors inside the sts throughout the work.

The color of the yarn is always changed in the last 2 loops of the stitch. In a correct color change, you have a stitch in a solid color and a new color on your hook.

Chart 1

Mk 2 panels - crochet back & forth.

Use color #3402 circulo red.

Ch 88 + 1 to turn.

Row 1: start into 2nd chain from hook, 88 sc.

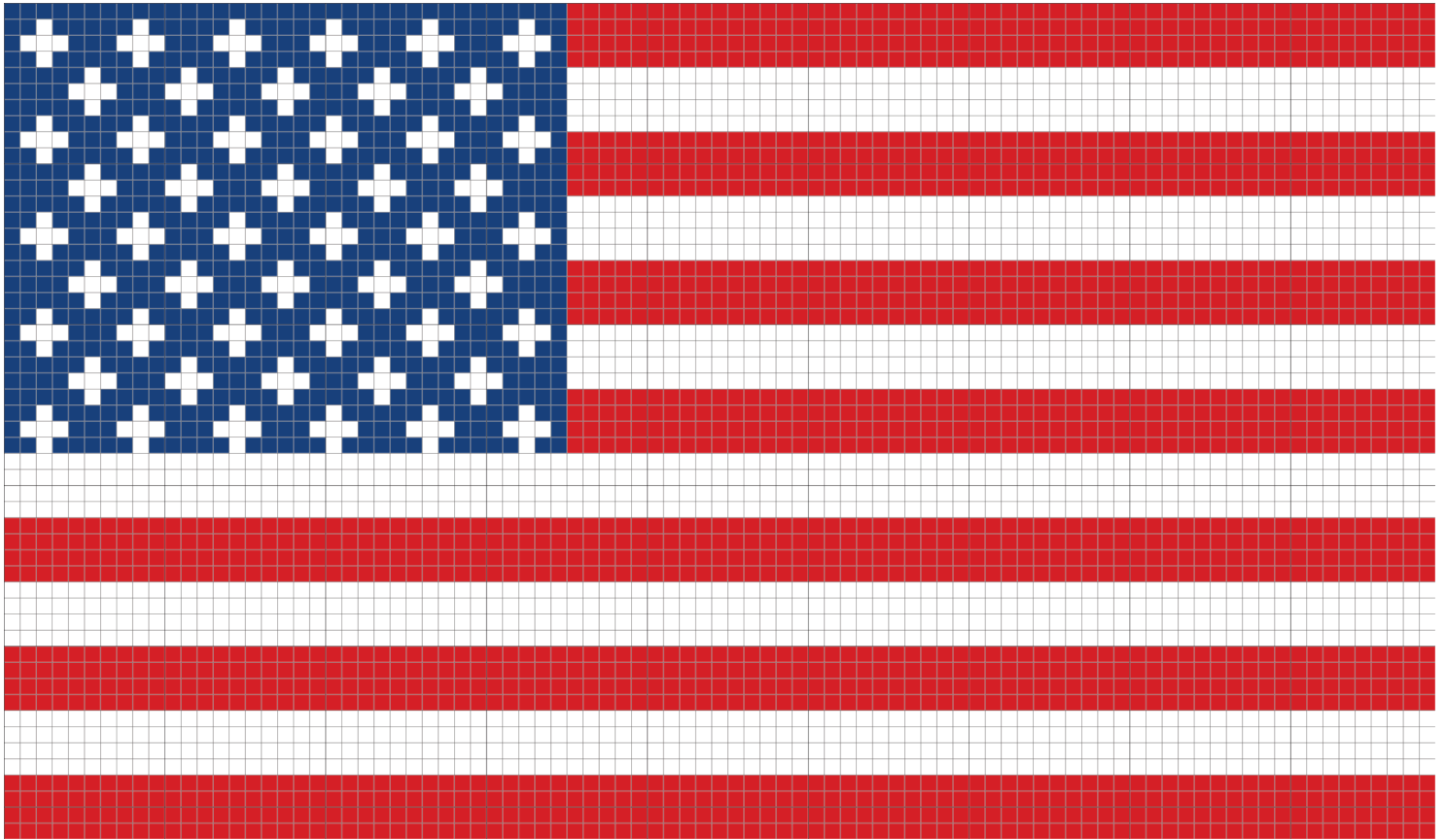
Rows 2 - 4: ch 1, 88 sc. Cut yarn.

Continue following chart 1 switching colors accordingly.

Assembly

Overlap panels (stars on top = one panel stars will be on top right and the other on top left so both sides will be right). Use tapestry needle and color 3402 to sew 3 sides and insert pillow or polyester stuffing before sewing last side. Fasten off.

USA PILLOW



Stitch key

o ch

□ = × 1 sc

□ Natural Cotton (8001)

■ Natural Cotton (2856)

■ Natural Cotton (3402)

Chart 1

Ch 88 + 1 to turn.

NAVY DRESS



NAVY DRESS

Created by Angelica Schmitt

Size: 6

Level: Advanced

Material

Circulo yarns - Anne

2 balls in each color: #2856 navy #3402 circulo red, and #8001 white.

Crochet hook D-3 or size to obtain gauge

Tapestry needle

Fabric to line dress

Paper, pencil, measuring tape and scissors.

Stitch glossary and abbreviations

stitch: st

make: mk

skip: sk

chain: ch

slip st: sl st

single crochet: sc

half double crochet: hdc

double crochet: dc

Increase: inc

decrease: dec

round: rnd

end of row/rnd: eor.

2 dc cluster: 2 dc closed tog in the same base st.

3 dc cluster: 3 dc closed tog in the same base st.

FPdc: Instead of inserting your hook in the ch at the top of st, wind it in and out of the post below, then work your dc as normal.

BPdc: Instead of inserting your hook in the ch at the top of st, go behind with your hook and wind it in and out of the post below, then work your dc as normal.

Pattern A: follow chart 1

Pattern B: follow chart 2

Collar: follow chart 3

Gauge

21 S x 10 R = 4"/10 cm over chart 2 - Pattern B using hook D-3.

Color per tiers:

Color #2856 navy

Tiers: 1,5,9,13,17,21,25,28,32,36, 43, 47 and 51.

Color #8001 white

Tiers: 2, 4, 6, 8, 10, 12, 14, 16, 18, 20, 22, 24, 27, 29, 31, 33, 35, 37, 39, 40, 42, 44, 46, 48, 50, 52 and 54.

Color #3402 circulo red

Tiers: 3, 7, 11, 15, 19, 23, 26, 30, 34, 38, 41, 45, 49 and 53.

Dress

Part 1 - crochet in the round - change colors according to description above.

Use color #2856 navy. Start at hemline.

Ch 200, close ring with 1 sl st.

Follow Pattern A - chart 1 and rep sts and number of motifs per tier.

Tiers 1 - 15: 20 motifs

Tier 16: dec 1 motif on each side

Tiers 17 - 29: 18 motifs.

Part 2 - crochet front and back separately - crochet back and forth. Change colors according to description above.

Front continuation: follow Pattern B - chart 2 and rep sts.

Tier 30: 1/2 motif, 7 motifs, 1/2 motif

Tier 31: 7 motifs

Tiers 32 - 34: 1/2 motif, 5 motifs, 1/2 motif

Tiers 35 & 36: 5 motifs

Tier 37: 1/2 motif, 3 motifs, 1/2 motif

Tiers 38 & 39: 3 motifs, fasten off.

Back continuation: same as front. Fasten off and set piece aside.

Part 3

Right sleeve - crochet in the round - switch colors according to description above.

Start at cuff.

Ch 80, close ring with 1 sl st.

Follow Pattern A chart 1 and rep sts and number of motifs per tier.

Tiers 40 - 45: 8 motifs

Part 4 - continue crocheting back & forth - follow chart 2 and rep sts and number of motifs per tier.

Change colors according to description above

Tiers 46 & 47: 7 motifs

Tiers 48 & 49: 1/2 motif, 5 motifs, 1/2 motif

Tier 50: 5 motifs.

Tiers 51 & 52: 1/2 motif, 3 motifs, 1/2 motif

Tiers 53 & 54: 3 motifs. Fasten off and set piece aside.

Left sleeve - same as right.

Assembly and finishing:

Use tapestry needle and colors according each tier, sew sleeves onto raglan shape (7.5")

Collar - crochet in the round.

Join color #2856 navy at neckline.

Rnds 1 - 4: follow chart 3 (88 sts) and rep sts

Hemline crochet edge: Join color #2856 navy at hemline and mk 1 rnd in sc (177 sc), close rnd with 1

sl st.

Sleeve crochet edge: Join color #8001 white at cuff and mk 1 rnd in sc (57 sc), close rnd with 1 sl st.

Lining: Use dress as a template. Mk a slip to wear underneath.

NAVY DRESS

Chart 1 - Pattern A

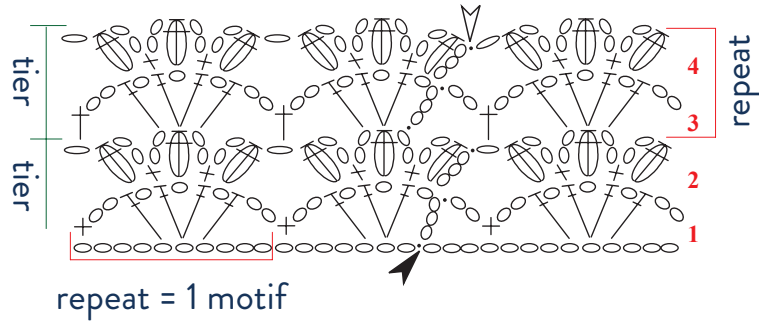
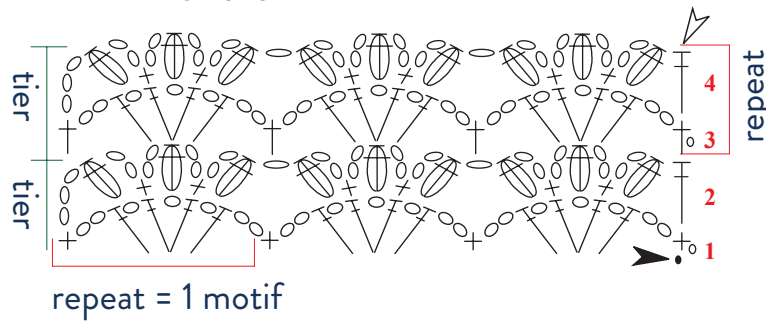


Chart 2 - Pattern B



Stitch Key

○ ch

+ sc

● sl st

┆ dc

⌘ 2 dc cluster

⌘ 3 dc cluster

┆ BPdc

┆ FPdc

↗ direction

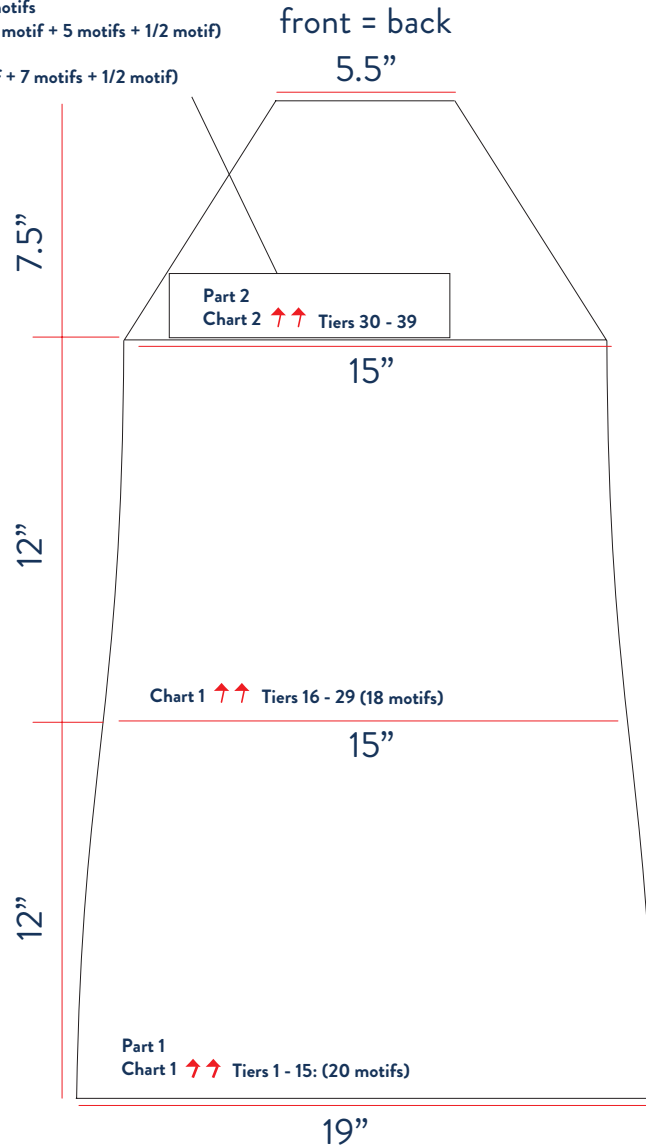
▲ beginning

△ end

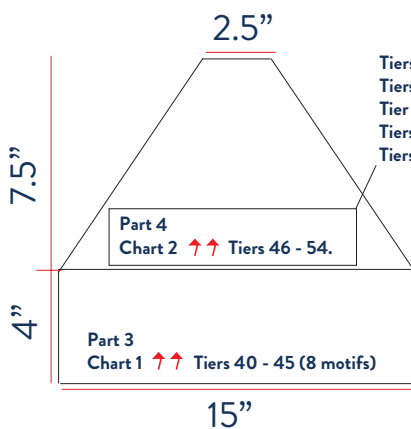
NAVY DRESS

Tiers 38 & 39: 3 motifs.
 Tier 37: (1/2 motif + 3 motifs + 1/2 motif)
 Tiers 35 & 36: 5 motifs
 Tiers 32 - 34: (1/2 motif + 5 motifs + 1/2 motif)
 Tier 31: 7 motifs
 Tier 30: (1/2 motif + 7 motifs + 1/2 motif)

Measurement chart



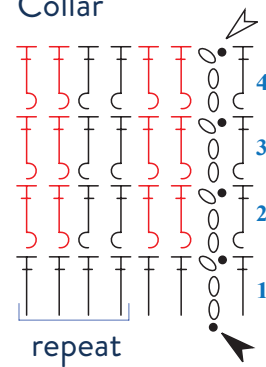
Sleeve



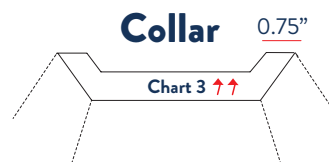
Tiers 53 & 54: (3 motifs)
 Tiers 51 7 52: (1/2 motif + 3 motifs + 1/2 motif)
 Tier 50: (5 motifs)
 Tiers 48 & 49: (1/2 motif + 5 motifs + 1/2 motif)
 Tiers 46 & 47: (7 motifs)

Chart 3

Collar



Collar



GEORGE



GEORGE

Created by Juliana Penhorate
(@amigujumi)

Pattern review: Patty Wolf

Approx. size: 5.5" tall

Level: Intermediate

Material

Circulo yarns - Amigurumi

1 ball in each color #8001 white

#3402 circulo red #2829 ball

blue and 7563 chantilly

1 ball of Rubi color #8001 white

Crochet hook C-2

Tapestry needle

Polyester stuffing

Stitch markers

Optional: fabric glue

Stitch glossary and abbreviations:

stitch: st

skip: sk

chain: ch

slip st: sl st

single crochet: sc

double crochet: dc

Increase: inc (2 sc in the same base st)

invisible decrease: dec (insert hook into the front loops of the 2 next sts, yo, pull through 2 loops, yo, pull through 2 loops)

round: rnd/R

end of row/rnd: eor.

Legs (make 2)

Start with color #3402 circulo red

Crochet in the round. Close rnds with 1 sl st.

Make a magic ring.

R1: 6 sc inside of magic ring

R2: 6 inc = 12 sc

R3: 1 sc, 1 inc = 18 sc

R4 & 5: 18 sc in each rnd.

R6: 1 sc, 4 dec = 10 sc

Switch to color #2829 ball blue

R7: 4 sc, 1 inc = 12 sc

R8: 3 sc, 1 inc = 15 sc

R9: 4 sc, 1 inc = 18 sc

Fasten off with a tail for sewing (approx. 8").

Panel to use between legs

Use color #2829 ball blue

Crochet back and forth.

Ch 3.

R1: sk 1 ch, 2 sc, ch 1, turn.

R2: 2 sc

Do not cut yarn and proceed to the body.

Body

Continue using color #2829 ball blue

R1: 16 sc in leg 1 (sk 2 sts and start at the third st), 2 sc in the panel between legs, 16 sc in leg 2 (sk 2 sts and start at the third st), 2 sc in the panel between legs = 36 sc.

Use tapestry needle to close gap between legs and the panel between legs.

R2 & 3: 36 sc in each rnd.

Insert stuffing into legs.

Switch to color #8001 white

R4: 36 sc

Switch to color #3402 circulo red

R5 - 7 (3 rnds): 36 sc in each rnd.

R8: 10 sc, 1 dec = 33 sc

R9: 9 sc, 1 dec = 30 sc

R10: 3 sc, 1 dec = 24 sc

R11: 2 sc, 1 dec = 18 sc

Insert stuffing into body.

Switch to color #7563 chantilly

R12: 1 sc, 1 inc = 27 sc

R13: 2 sc, 1 inc = 36 sc

R14: 5 sc, 1 inc = 42 sc

R15: 6 sc, 1 inc = 48 sc

R16 - 25 (10 rnds) = 48 sc in each rnd.

R26: 6 sc, 1 dec = 42 sc

R27: 5 sc, 1 dec = 36 sc

R28: 4 sc, 1 dec = 30 sc

R29: 3 sc, 1 dec = 24 sc

Insert stuffing into head.

R30: 2 sc, 1 dec = 18 sc

R31: 1 sc, 1 dec = 12 sc

R32: 6 dec = 6 sc.

Use tapestry needle, weave the yarn through the front loop of each stitch in your last rnd, gently pull the yarn taught.

Nose

Use color #7563 chantilly

Crochet in the round. Close rnds with 1 sl st.

Make a magic ring.

R1: 5 sc inside of magic ring

R2: 5 inc = 10 sc

R3: 1 sc, 1 inc = 15 sc

R4: 1 sc, 1 dec = 10 sc

Fasten off with a tail for sewing.

Insert some stuffing and sew nose onto head as shown in the picture.

Beard

Use color #8001 white.

Cuts strands and join them onto

head as fringes and trim edges.
(See picture)

Arms (make 2)

Start with color #7563 chantilly
Crochet in the round. Close rnds
with 1 sl st.

Make a magic ring.

R1: 6 sc inside of magic ring

R2: 6 inc = 12 sc

R3 & 4: 12 sc in each rnd.

R5: 1 sc, 1 dec = 8 sc

Insert stuffing into hand.

Switch to color #8001 white

R6: 8 sc

Switch to color #3402 circulo red

R7 - 11 (5 rnds) = 8 sc in each
rnd.

Flat piece and close sides with 4
sc.

Fasten off with a tail for sewing.

Sew arms onto body as shown in
the picture.

Hat

Start with color #3402 circulo
red

Crochet in the round. Close rnds
with 1 sl st.

Make a magic ring.

R1: 6 sc inside of magic ring

R2: 6 inc = 12 sc

R3: 1 sc, 1 inc = 18 sc

R4: 2 sc, 1 inc = 24 sc

R5: 3 sc, 1 inc = 30 sc

R6: 4 sc, 1 inc = 36 sc

R7: 5 sc, 1 inc = 42 sc

R8: 6 sc, 1 inc = 48 sc

Start tapestry crochet

Use color #2829 ball blue,
#3402 circulo red and #8001
white

R9 & 10: 12 sc with color #2829

ball blue and 36 sc with #8001
white = 48 sc

R11 & 12: 12 sc with color #2829

ball blue and 36 sc with color
#3402 circulo red = 48 sc

R13 & 14: 12 sc with color #2829

ball blue and 36 sc with color
#8001 white = 48 sc

Cut color #2829 ball blue.

Continue with color #3402
circulo red.

R15 & 16: 48 sc in each rnd.

Switch to color #8001 white

R17 & 18: 48 sc in each rnd.

Switch to color #3402 circulo
red.

R19 & 20: 48 sc in each rnd.

Switch to color #8001 white.

R21 & 22: 48 sc in each rnd.

Cut color #8001 white.

Continue with color #3402
circulo red.

R23 (back loop only): 5 sc, 1 inc
= 56 sc

R24: 3 sc, 1 inc, 3 sc = 64 sc

R25: 7 sc, 1 inc = 72 sc

R26: 72 sl sts.

Fasten off.

Use Rubi color #8001 white to
embroider the stars as shown in
the picture.

Sew or glue hat onto head.

Banner (make 3 flags)

Use color #8001 white

Crochet back and forth. Ch 1 to
turn.

Ch 2.

R1: sk 1 ch, 1 sc, ch 1, turn.

R2: 3 sc in the same base st, ch 1,
turn = 3 sc

R3: 2 sc, 1 inc, ch 1, turn = 4 sc

R4: 3 sc, 1 inc, ch 1, turn = 5 sc

R5: 4 sc, 1 inc, ch 1, turn = 6 sc

R6: 5 sc, 1 inc, ch 1, turn = 7 sc

Fasten off.

Embroider the letter "U" with
color #2829.

Make the second flag with color
#3402 circulo red and use color
#8001 white to embroider the
letter "S".

Make the third flag with color
#2829 ball blue and use color
#3402 circulo red to embroider
the letter "A".

Use color #8001 white to make
the cord for the banner: ch 5, 7
sl sts in the blue flag, ch 2, 7 sl sts
in the red flag, ch 2, 7 sl sts in the
white flag, ch 5.

Fasten off and sew onto hands as
shown in the picture.

Video tips to make perfect Amigurumis!

1 - Download the Love Circulo

App

2 - Open AR

3 - Read QR code

Available for Android and IOS.



JOHN ★
★
★
★



JOHN

Created by Juliana Penhorate (@amigujumi)

Pattern review: Patty Wolf

Approx. size: 8.75" tall

Level: Intermediate

Material

Circulo yarns - Amigurumi

1 ball in each color #8001 white
#3402 circulo red #2829 ball
blue and 7563 chantilly

1 ball of Rubi color #8001 white

Crochet hook C-2

Tapestry needle

Polyester stuffing

Stitch markers

Optional: fabric glue

Stitch glossary and

abbreviations:

stitch: st

skip: sk

chain: ch

slip st: sl st

single crochet: sc

double crochet: dc

Increase: inc (2 sc in the same
base st)

invisible decrease: dec (insert
hook into the front loops of the 2
next sts, yo, pull through 2 loops,
yo, pull through 2 loops)

round: rnd/R

end of row/rnd: eor.

Legs (make 2)

Start with color #2829 ball blue

Crochet in the round. Close rnds
with 1 sl st.

Make a magic ring.

R1: 6 sc inside of magic ring

R2: 6 inc = 12 sc

R3: 1 sc, 1 inc = 18 sc

R4 & 5: 18 sc in each rnd.

R6: 1 sc, 4 dec = 10 sc

Switch to color #8001 white

R7: 4 sc, 1 inc = 12 sc

Switch to color #3402 circulo red

R8: 3 sc, 1 inc = 15 sc

Switch to color #8001 white

R9: 4 sc, 1 inc = 18 sc

Fasten off with a tail for sewing
(approx. 8").

Panel to use between legs

Use color #8001 white

Crochet back and forth.

Ch 3.

R1: sk 1 ch, 2 sc, ch 1, turn.

R2: 2 sc

Fasten off.

Body

Switch to color #3402 circulo red
R1: 16 sc in leg 1 (sk 2 sts and start
at the third st), 2 sc in the panel
between legs, 16 sc in leg 2 (sk 2

sts and start at the thid st), 2 sc in
the panel between legs = 36 sc.

Use tapestry needle to close
gap between legs and the panel
between legs.

Switch to color #8001 white

R2: 36 sc

Switch to color #3402 circulo red

R3: 36 sc

Insert stuffing into legs.

Switch to color #8001 white

R4: 36 sc

Switch to color #2829 ball blue

R5 - 7 (3 rnds): 36 sc in each rnd.

R8: 10 sc, 1 dec = 33 sc

R9: 9 sc, 1 dec = 30 sc

R10: 3 sc, 1 dec = 24 sc

R11: 2 sc, 1 dec = 18 sc

Insert stuffing into body.

Switch to color #7563 chantilly

R12: 1 sc, 1 inc = 27 sc

R13: 2 sc, 1 inc = 36 sc

R14: 5 sc, 1 inc = 42 sc

R15: 6 sc, 1 inc = 48 sc

R16 - 25 (10 rnds) = 48 sc in
each rnd.

R26: 6 sc, 1 dec = 42 sc

R27: 5 sc, 1 dec = 36 sc

R28: 4 sc, 1 dec = 30 sc

R29: 3 sc, 1 dec = 24 sc

Insert stuffing into head.

R30: 2 sc, 1 dec = 18 sc

R31: 1 sc, 1 dec = 12 sc

R32: 6 dec = 6 sc.

Use tapestry needle, weave the
yarn through the front loop of
each stitch in your last rnd, gently
pull the yarn taught.

Nose

Use color #7563 chantilly
Crochet in the round. Close rnds
with 1 sl st.

Make a magic ring.

R1: 6 sc inside of magic ring

R2: 6 inc = 12 sc

R3: 1 sc, 1 inc = 18 sc

R4 & 5: 18 sc in each rnd.

R6: 1 sc, 1 dec = 12 sc

Fasten off with a tail for sewing.

Insert some stuffing and sew nose onto head as shown in the picture.

Beard

Use color #8001 white.

Cuts strands and join them onto head as fringes and trim edges.

(See picture)

Arms (make 2)

Start with color #7563 chantilly
Crochet in the round. Close rnds with 1 sl st.

Make a magic ring.

R1: 6 sc inside of magic ring

R2: 6 inc = 12 sc

R3 & 4: 12 sc in each rnd.

R5: 1 sc, 1 dec = 8 sc

Insert stuffing into hand.

Switch to color #2829 ball blue

R6 - 11 (6 rnds): 8 sc in each rnd.

Flat piece and close sides with 4 sc.

Fasten off with a tail for sewing.

Sew arms onto body as shown in the picture.

Hat

Start with color #2829 ball blue
Crochet in the round. Close rnds with 1 sl st.

Make a magic ring.

R1: 6 sc inside of magic ring

R2: 1 sc, 1 inc = 9 sc

R3: 4 hdc, 5 sc = 9 sts

R4: 2 sc, 1 inc = 12 sc

R5: 5 hdc, 7 sc = 15 sts

R6: 3 sc, 1 inc = 15 sc

R7: 7 hdc, 8 sc = 15 sts

R8: 4 sc, 1 inc = 18 sc

R9: 9 hdc, 9 sc = 18 sts

R10: 5 sc, 1 inc = 21 sc

R11: 11 hdc, 10 sc = 21 sts

R12: 6 sc, 1 inc = 24 sc

R13: 12 hdc, 12 sc = 24 sts

R14: 7 sc, 1 inc = 27 sc

R15: 13 hdc, 14 sc = 27 sts

R16: 8 sc, 1 inc = 30 sc

R17: 15 hdc, 15 sc = 30 sts

R18: 9 sc, 1 inc = 33 sc

R19: 16 hdc, 17 sc = 33 sts

R20: 10 sc, 1 inc = 36 sc

R21: 18 hdc, 18 sc = 36 sts

R22: 11 sc, 1 inc = 39 sc

R23: 19 hdc, 20 sc = 39 sts

R24: 12 sc, 1 inc = 42 sc

R25: 21 Hdc, 21 sc = 42 sts

R26: 13 sc, 1 inc = 45 sc

R27: 22 hdc, 23 sc = 45 sts

R28: 14 sc, 1 inc = 48 sc

switch to color #8001 white.

R29 (back loop only): 1 sc, 1 inc = 72 sc

Switch to color #3402 circulo red

R30: 1 sc, 1 inc = 108 sc

Fasten off with a tail for sewing.

Sew or glue hat onto head.

Star - hat topper

Use color #8001 white

Crochet in the round. Close rnds with 1 sl st.

Make a magic ring.

R1: 5 sc inside of magic ring

R2: 5 inc = 10 sc

R3: (ch 4, sk 1 ch, 1 sc, 1 hdc, 1 dc, sk 1 base st, 1 sl st)5x.

Fasten off with a tail for sewing.

Sew star onto hat top as shown in the picture.

Heart

Part 1

Use color #3402 circulo red

Crochet in the round. Close rnds with 1 sl st.

Make a magic ring.

R1: 6 sc inside of magic ring

Switch to color #8001 white (do not cut yarn)

R2: 6 inc = 12 sts

Switch to color #3402 circulo red (do not cut yarn)

R3: 1 sc, 1 inc = 18 sts

Switch to color #8001 white (do not cut yarn)

R4: 18 sc. Do not cut yarn.

Part 2

Use color #2829 ball blue

Crochet in the round. Close rnds with 1 sl st.

Make a magic ring.

R1: 6 sc inside of magic ring

R2: 6 inc = 12 sc

R3: 1 sc, 1 inc = 18 sc

R4: 18 sc

Join part 1 & 2 in R5 and work with 2 colors in the same rnd.

Start tapestry crochet.

R5: 18 sc with color #2829 ball blue and 18 sc with color #3402 circulo red

R6: use color #2829 ball blue: (7 sc, 1 dec) 2x, use color #8001 white: (7 sc, 1 dec) 2x = 32 sc
Cut color #2829 ball blue.

Switch to color 3402 circulo red

R7: 6 sc, 1 dec = 28 sc
Cut color #3402 circulo red and join color #8001 white on the other side of the heart and make:

R8: 5 sc, 1 dec = 24 sc

Switch to color #3402 circulo red

R9: 4 sc, 1 dec = 20 sc

Switch to color #8001 white

R10: 3 sc, 1 dec = 16 sc

Switch to color #3402 circulo red

Insert stuffing.

R11: 2 sc, 1 dec = 12 sc

Switch to color #8001 white

R12: 1 sc, 1 dec = 8 sc

Switch to color #3402 circulo red

R13: 4 dec = 4 sc.

Use tapestry needle, weave the yarn through the front loop of each stitch in your last rnd, gently pull the yarn taught.

Use Rubi color #8001 white to embroider the stars onto heart as shown in the picture.

Sew heart onto hands.

Video tips to make perfect Amigurumis!

1 - Download the Love Circulo

App

2 - Open AR

3 - Read QR code

Available for Android and IOS.



THOMAS



THOMAS

Created by Juliana Penhorate
(@amigujumi)

Pattern review: Patty Wolf

Approx. size: 6.25" tall

Level: Intermediate

Material

Circulo yarns - Amigurumi

1 ball in each color #8001 white

#3402 circulo red #2829 ball

blue and 7563 chantilly

1 ball of Rubi color #8001 white

Crochet hook C-2

Tapestry needle

Polyester stuffing

Stitch markers

Optional: fabric glue

Stitch glossary and

abbreviations:

stitch: st

skip: sk

chain: ch

slip st: sl st

single crochet: sc

double crochet: dc

Increase: inc (2 sc in the same
base st)

invisible decrease: dec (insert
hook into the front loops of the 2
next sts, yo, pull through 2 loops,
yo, pull through 2 loops)

round: rnd/R

end of row/rnd: eor.

Legs (make 2)

Start with color #8001 white

Crochet in the round. Close rnds

with 1 sl st.

Make a magic ring.

R1: 6 sc inside of magic ring

R2: 6 inc = 12 sc

R3: 1 sc, 1 inc = 18 sc

R4 & 5: 18 sc in each rnd.

R6: 1 sc, 4 dec = 10 sc

Switch to color #3402 circulo red

R7: 4 sc, 1 inc = 12 sc

R8: 3 sc, 1 inc = 15 sc

R9: 4 sc, 1 inc = 18 sc

Fasten off with a tail for sewing
(approx. 8").

Panel to use between legs

Use color #3402 circulo red

Crochet back and forth.

Ch 3.

R1: sk 1 ch, 2 sc, ch 1, turn.

R2: 2 sc

Do not cut yarn and proceed to
the body.

Body

Continue using color #3402
circulo red

R1: 16 sc in leg 1 (sk 2 sts and start
at the third st), 2 sc in the panel
between legs, 16 sc in leg 2 (sk 2
sts and start at the third st), 2 sc in
the panel between legs = 36 sc.

Use tapestry needle to close
gap between legs and the panel
between legs.

R2 - 4 (3 rnds): 36 sc in each
rnd.

Insert stuffing into legs.

Switch to color #2829 ball blue

R5 - 7 (3 rnds): 36 sc in each rnd.

R8: 10 sc, 1 dec = 33 sc

R9: 9 sc, 1 dec = 30 sc

R10: 3 sc, 1 dec = 24 sc

R11: 2 sc, 1 dec = 18 sc

Insert stuffing into body.

Switch to color #7563 chantilly

R12: 1 sc, 1 inc = 27 sc

R13: 2 sc, 1 inc = 36 sc

R14: 5 sc, 1 inc = 42 sc

R15: 6 sc, 1 inc = 48 sc

R16 - 25 (10 rnds) = 48 sc in
each rnd.

R26: 6 sc, 1 dec = 42 sc

R27: 5 sc, 1 dec = 36 sc

R28: 4 sc, 1 dec = 30 sc

R29: 3 sc, 1 dec = 24 sc

Insert stuffing into head.

R30: 2 sc, 1 dec = 18 sc

R31: 1 sc, 1 dec = 12 sc

R32: 6 dec = 6 sc.

Use tapestry needle, weave the
yarn through the front loop of
each stitch in your last rnd, gently
pull the yarn taught.

Nose

Use color #7563 chantilly

Crochet in the round. Close rnds
with 1 sl st.

Make a magic ring.

R1: 5 sc inside of magic ring

R2: 5 inc = 10 sc

R3: 1 sc, 1 inc = 15 sc

R4: 1 sc, 1 dec = 10 sc

Fasten off with a tail for sewing.

Insert some stuffing and sew nose
onto head as shown in the picture.

Beard

Use color #8001 white.

Cuts 25 strands and join them onto head as fringes and trim edges. (See picture)

Arms (make 2)

Start with color #7563 chantilly Crochet in the round. Close rnds with 1 sl st.

Make a magic ring.

R1: 6 sc inside of magic ring

R2: 6 inc = 12 sc

R3 & 4: 12 sc in each rnd.

R5: 1 sc, 1 dec = 8 sc

Insert stuffing into hand.

Switch to color #2829 ball blue

R6 - 11 (6 rnds) = 8 sc in each rnd.

Flat piece and close sides with 4 sc.

Fasten off with a tail for sewing.

Sew arms onto body as shown in the picture.

Hat

Start with color #2829 ball blue Crochet in the round. Close rnds with 1 sl st.

Make a magic ring.

R1: 6 sc inside of magic ring

R2: 6 inc = 12 sc

R3: 1 sc, 1 inc = 18 sc

R4: 2 sc, 1 inc = 24 sc

R5: 3 sc, 1 inc = 30 sc

R6: 4 sc, 1 inc = 36 sc

R7: 5 sc, 1 inc = 42 sc

R8: 6 sc, 1 inc = 48 sc

R9 back loop only: 48 sc

R10: 48 sc

Start tapestry crochet with color

#8001 white with color #3402 circulo red\

R11 - 20 (10 rnds): (4 sc with color #8001 white and 4 sc with color #3402 circulo red) 6x = 48 sc

Cut colors #8001 white and #3402 circulo red

Use color #2829 ball blue.

R21 & 22: 48 sc in each rnd.

R23 (back loop only): 5 sc, 1 inc = 56 sc

R24: 6 sc, 1 inc = 64 sc

R25: 3 sc, 1 inc, 3 sc = 72 sc

R26: 72 sl sts.

Fasten off with a tail for sewing.

Sew or glue hat onto head.

Rocket

Use color #2892 ball blue Crochet in the round. Close rnds with 1 sl st.

Make a magic ring.

R1: 6 sc inside of magic ring

R2: 6 inc = 12 sc

R3: 1 sc, 1 inc = 18 sc

R4 (back loop only) = 18 sc

Switch to color #3402 circulo red

R5: 18 sc

Switch to color #8001 white

R6 - 15 (10 rnds): 18 sc in each rnd.

Switch to color #3402 circulo red

R16: 18 sc

R17 (back loop only) = 18 sc

R18: 4 sc, 1 dec = 15 sc

Insert stuffing.

R19: 3 sc, 1 dec = 12 sc

R20: 2 sc, 1 dec = 9 sc

R21: 1 sc, 1 dec = 6 sc.

Use tapestry needle, weave the

yarn through the front loop of each stitch in your last rnd, gently pull the yarn taught.

Joi color #3402 circulo red into front loops of R16 and work as follows: (5 hdc, 2 hdc in the same base st) 3x = 21 hdc.

Use color #2829 ball blue to embroider the letters U S A between rnds 7 - 14, 1 st apart.

Cut one strand of each color and join R1 as a fringe.

Sew rocket onto hands.

Video tips to make perfect Amigurumis!

1 - Download the Love Circulo App

2 - Open AR

3 - Read QR code

Available for Android and IOS.



JAMES



JAMES

Created by Juliana Penhorate

(@amigujumi)

Pattern review: Patty Wolf

Approx. size: 7.75" tall

Level: Intermediate

Material

Circulo yarns - Amigurumi

1 ball in each color #8001 white

#3402 circulo red #2829 ball

blue and 7563 chantilly

1 ball of Rubi color #8001 white

Crochet hook C-2

Tapestry needle

Polyester stuffing

Stitch markers

Optional: fabric glue

Stitch glossary and

abbreviations:

stitch: st

skip: sk

chain: ch

slip st: sl st

single crochet: sc

double crochet: dc

Increase: inc (2 sc in the same base st)

invisible decrease: dec (insert

hook into the front loops of the 2 next sts, yo, pull through 2 loops, yo, pull through 2 loops)

Popcorn st: 3 dc closed tog in the same base st.

round: rnd/R

end of row/rnd: eor.

Legs (make 2)

Start with color #2829 ball blue
Crochet in the round. Close rnds with 1 sl st.

Make a magic ring.

R1: 6 sc inside of magic ring

R2: 6 inc = 12 sc

R3: 1 sc, 1 inc = 18 sc

R4 & 5: 18 sc in each rnd.

R6: 1 sc, 4 dec = 10 sc

Switch to color #8001 white

R7: 4 sc, 1 inc = 12 sc

R8: 3 sc, 1 inc = 15 sc

R9: 4 sc, 1 inc = 18 sc

Fasten off with a tail for sewing (approx. 8").

Panel to use between legs

Use color #8001 white

Crochet back and forth.

Ch 3.

R1: sk 1 ch, 2 sc, ch 1, turn.

R2: 2 sc

Do not cut yarn and proceed to the body.

Body

Continue using color #8001 white

R1: 16 sc in leg 1 (sk 2 sts and start at the third st), 2 sc in the panel between legs, 16 sc in leg 2 (sk 2 sts and start at the third st), 2 sc in the panel between legs = 36 sc.

Use tapestry needle to close gap between legs and the panel between legs.

R2 - 4 (3 rnds): 36 sc in each

rnd.

Insert stuffing into legs.

Switch to color #3402 circulo red

R5 - 7 (3 rnds): 36 sc in each rnd.

R8: 10 sc, 1 dec = 33 sc

R9: 9 sc, 1 dec = 30 sc

R10: 3 sc, 1 dec = 24 sc

R11: 2 sc, 1 dec = 18 sc

Insert stuffing into body.

Switch to color #7563 chantilly

R12: 1 sc, 1 inc = 27 sc

R13: 2 sc, 1 inc = 36 sc

R14: 5 sc, 1 inc = 42 sc

R15: 6 sc, 1 inc = 48 sc

R16 - 25 (10 rnds) = 48 sc in each rnd.

R26: 6 sc, 1 dec = 42 sc

R27: 5 sc, 1 dec = 36 sc

R28: 4 sc, 1 dec = 30 sc

R29: 3 sc, 1 dec = 24 sc

Insert stuffing into head.

R30: 2 sc, 1 dec = 18 sc

R31: 1 sc, 1 dec = 12 sc

R32: 6 dec = 6 sc.

Use tapestry needle, weave the yarn through the front loop of each stitch in your last rnd, gently pull the yarn taught.

Nose

Use color #7563 chantilly

Crochet in the round. Close rnds with 1 sl st.

Make a magic ring.

R1: 6 sc inside of magic ring

R2: 6 inc = 12 sc

R3: 1 sc, 1 inc = 18 sc

R4: 18 sc

R5: 1 sc, 1 dec = 12 sc
Fasten off with a tail for sewing.
Insert some stuffing and sew nose onto head as shown in the picture.

Beard

Use color #8001 white.
Cuts strands and join them onto head as fringes and trim edges.
(See picture)

Arms (make 2)

Start with color #7563 chantilly
Crochet in the round. Close rnds with 1 sl st.
Make a magic ring.
R1: 6 sc inside of magic ring
R2: 6 inc = 12 sc
R3 & 4: 12 sc in each rnd.
R5: 1 sc, 1 dec = 8 sc
Insert stuffing into hand.
Switch to color #3402 circulo red
R6 - 11 (6 rnds) = 8 sc in each rnd.
Flat piece and close sides with 4 sc.
Fasten off with a tail for sewing.
Sew arms onto body as shown in the picture.

Hat

Start with color #3402 circulo red
Crochet in the round. Close rnds with 1 sl st.
Make a magic ring.
R1: 6 sc inside of magic ring
R2: 1 sc, 1 inc = 9 sc
Switch to color #8001 white
R3: 4 hdc, 5 sc = 9 sts
R4: 2 sc, 1 inc = 12 sc

Switch to color #3402 circulo red
R5: 5 hdc, 7 sc = 12 sts
R6: 3 sc, 1 inc = 15 sc
Switch to color #8001 white
R7: 7 hdc, 8 sc = 15 sts
R8: 4 sc, 1 inc = 18 sc
Switch to color #3402 circulo red
R9: 9 hdc, 9 sc = 18 sts
R10: 5 sc, 1 inc = 21 sc
Switch to color #8001 white
R11: 10 hdc, 11 sc = 21 sts
R12: 6 sc, 1 inc = 24 sc
Switch to color #3402 circulo red
R13: 12 hdc, 12 sc = 24 sts
R14: 7 sc, 1 inc = 27 sc
Switch to color #8001 white
R15: 13 hdc, 14 sc = 27 sts
R16: 8 sc, 1 inc = 30 sc
Switch to color #3402 circulo red
R17: 15 hdc, 15 sc = 30 sts
R18: 9 sc, 1 inc = 33 sc
Switch to color #8001 white
R19: 16 hdc, 17 sc = 33 sts
R20: 10 sc, 1 inc = 36 sc
Switch to color #3402 circulo red
R21: 18 hdc, 18 sc = 36 sts
R22: 11 sc, 1 inc = 39 sc
Switch to color #8001 white
R23: 19 hdc, 20 sc = 39 sts
R24: 12 sc, 1 inc = 42 sc
Switch to color #3402 circulo red
R25: 21 hdc, 21 sc = 42 sts
R26: 13 sc, 1 inc = 45 sc
Switch to color #8001 white
R27: 22 hdc, 23 sc = 45 sts
R28: 14 sc, 1 inc = 48 sc
Switch to color #3402 circulo red
R29 back loop only: q sc, 1 inc = 72 sc
R30: 1 sc, 1 inc = 108 sc
Fasten off with a tail for sewing.

Sew or glue onto head.

Star

Use color #2829 ball blue
Crochet in the round. Close rnds with 1 sl st.
Make a magic ring.
R1: 5 sc inside of magic ring
R2: 5 inc = 10 sc
R3: (ch 4, sk 1 ch, 1 sc, 1 hdc, 1 dc, sk 1 base st, 1 sl st) 5x.
Fasten off and sew star onto hat as shown in the picture.

Drum

Start with color #8001 white
Crochet in the round. Close rnds with 1 sl st.
Make a magic ring.
R1: 6 sc inside of magic ring
R2: 6 inc = 12 sc
R3: 1 sc, 1 inc = 18 sc
R4: 2 sc, 1 inc = 24 sc
Switch to color #3402 circulo red
R5: 3 sc, 1 inc = 30 sc
R6 back loop only = 30 sc
Switch to color #2892 ball blue
R7: 30 sc
Switch to color #8001 white
R8: 30 sc
Switch to color #2829 ball blue
R9: 30 sc
Switch to color #3402 circulo red
R10: 30 sc
Switch to color #8001 white
R11 back loop only: 3 sc, 1 dec = 24 sc
R12: 2 sc, 1 dec = 18 sc
Insert stuffing.
R13: 1 sc, 1 dec = 12 sc
R14: 6 dec = 6 sc

Use tapestry needle, weave the yarn through the front loop of each stitch in your last rnd, gently pull the yarn taught.

Sew drum onto hands as shown in the picture.

Drum sticks (make 2)

Use color #2829 ball blue

Crochet back and forth.

R1: ch 3, 1 Popcorn st into ch 1, ch 7, sk 1 ch, 6 sl sts.

Fasten off.

Sew or glue onto hands and drum.

Video tips to make perfect Amigurumis!

1 - Download the Love Circulo

App

2 - Open AR

3 - Read QR code

Available for Android and IOS.





CIRCULO

www.circuloyarns.com

  /circulo.usa

