



11

exclusive
knitting
patterns

Delight yourself
with these pieces
made with our
2022 Special
yarn collection!!



Fall e - b o o k

Celebrate the arrival of this
anticipated season with
a lot of style and comfort!

CÍRCULO



Can you believe that there is another perfect match for autumn beyond pumpkin spice? If you said knitting, you are absolutely right!

Handmade pieces bring uniqueness and elegance associate to comfort like no other piece of clothing!

Comfort and elegance are the ideal combination for the most charming season of the year.

11 beautiful knitting patterns that highlight the beautiful color chart of the 2022 Special yarn collection! Get inspired, use your creativity to celebrate all the beauty of Fall in handmade garments!

Please remember to share your designs with us on social media. We love seeing everything you make!

Use #circuloyarns



Confete Pullover



Confete Pullover

Created by Gorete Andrade

Size: 18

Level: Easy

Material

Circulo Confete - 5 skeins color 7469

Knitting needles 10.5

Circular needles 10 (24")

Round elastic (approx. 1 yd)

Gauge: 15 S x 18 R = 4"/10 cm over pattern chart using needle 10.5.

Disclaimer

Measurements are approximate due to differences between centimeters and inches, needle sizes and tension (gauges).

All care has been taken to allow accurate completion of the pattern.

Stitch glossary and abbreviations:

st: stitches

CO: cast on

BO: bind off

rep: repeat

mk: make

dec: decreases

inc: increases

RS: right side

WS: wrong side

K: knit

P: purl

1x1 Rib st: Row 1: *K1, P1*. Row 2 and all even rows:

Knit the knit stitches and purl the purl stitches.

Pattern: follow chart

Back

CO 100 sts onto needles 10.5 and follow Pattern chart for 19.75". BO all sts.

Front

Work as back up to 16.5" from the beginning.

Start neckline shaping: BO the central 10 stitches and work sides separately. BO on the neckline side: 4 sts, 3 sts, 2 sts and 1 st every 2 rows. At 19.75" from the beginning BO remaining sts.

Sleeves (mk 2)

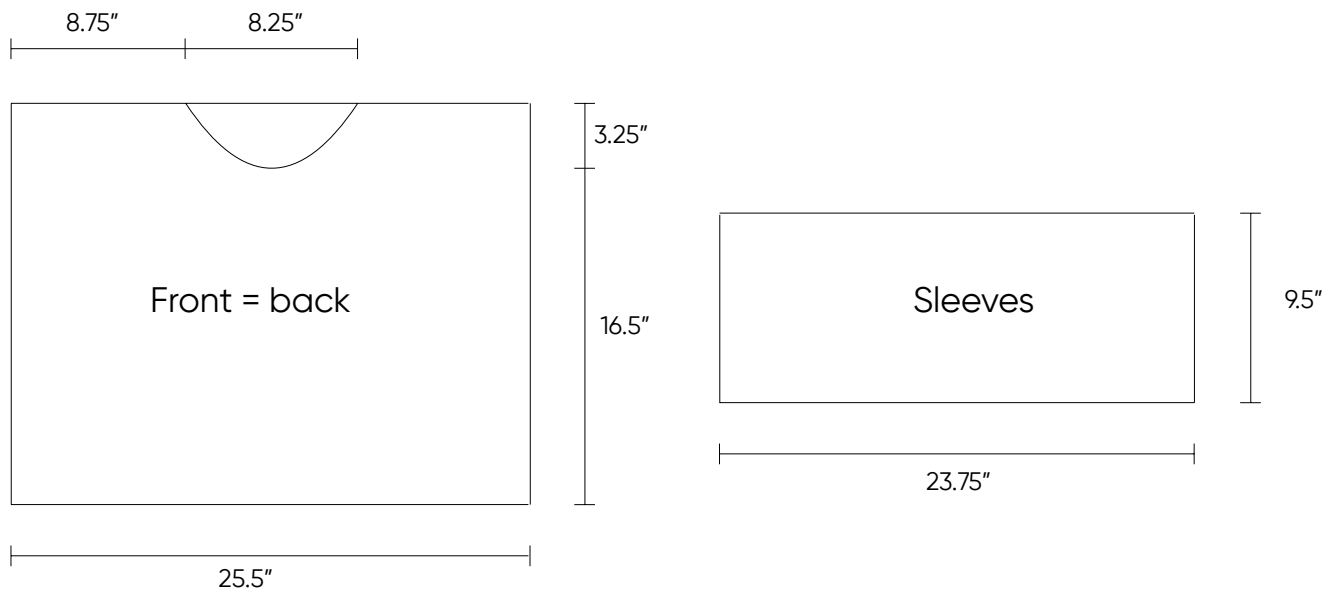
CO 90 sts onto needles 10.5 and follow Pattern chart. At 9.5" from the beginning BO all sts.

Assembly and finishing

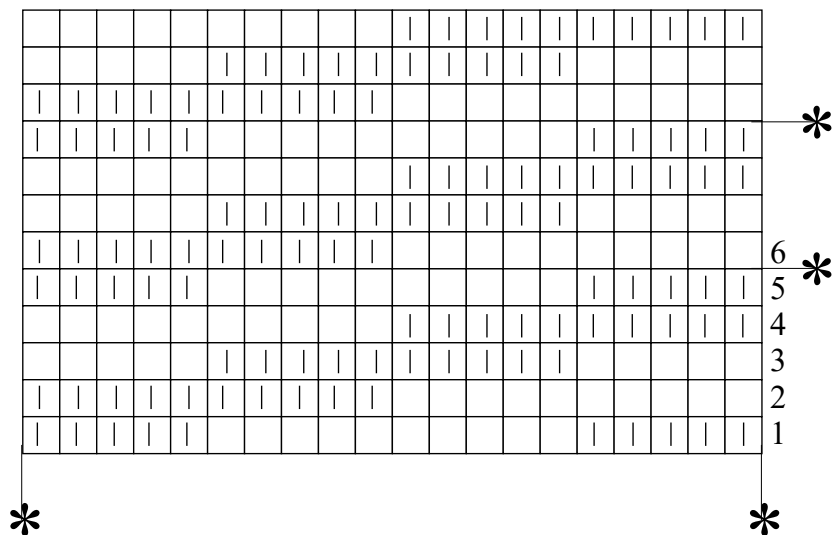
Sew shoulders. Use circular needles 10 to pick up 104 sts on the RS of neckline. Work in 1x1 Rib st for 1.25" and BO all sts. Sew sleeves onto 12" from shoulder seam and close sleeves. Sew sides. Divide round elastic in 8 equal parts. Insert 4 strands into cuffs: 1 strand into row 2, 2 strands tog into row 4 and 1 strand into row 6.

Tie elastic edges to prevent unraveling.

Confete Pullover



Pattern



Stitch key

| = k
 □ = p

WS: follow chart

Rep from * to *

Masala pullover



Masala pullover

Created by Gorete Andrada

Size: 10

Level: Advanced

Material

7 skeins of Amiga color 7136

Knitting needles 11

1 cable needle

Tapestry needle

Paper, pencil, measuring tape and scissors.

Gauge: 14 S x 18 R = 4"/10 cm in over Pattern A (chart 2) using needles 11.

Tip

Transfer measurement chart to paper to guide you along. Arrows indicate direction.

Disclaimer

Measurements are approximate due to differences between centimeters and inches, needle sizes and tension (gauges). All care has been taken to allow accurate completion of the pattern.

Stitch glossary and abbreviations:

st: stitches

CO: cast on

BO: bind off

CN: cable needle

rep: repeat

mk: make

dec: decreases

inc: increases

RS: right side

WS: wrong side

K: knit

P: purl

3x3 Rib st - follow chart 1

Pattern with variations A, B, C and D - follow chart 2

Back

Start at hemline.

CO [56 - 61 - 65 - 75 - 77 - 82 - 88 - 95 sts.] onto needles 11. Work in 3x3 Rib st - chart 1 and rep sts. At [3.5" - 3.5" - 3.5" -

3.5" - 4" - 4" - 4" - 4"] inc sts (alternating [14 - 11 - 13 - 9 - 11 - 12 - 12 - 9 sts] = total [70 - 72 - 78 - 84 - 88 - 94 - 100 - 104 sts] onto needles. Follow Pattern (A, B, C, D) chart 2 and rep sts as follows [7 - 8 - 11 - 12 - 18 - 19 - 22 - 24 sts] (A); 2 sts (B); 5 sts (A); 6 sts (C); 7 sts (A); 20 sts (D); 7 sts (A); 6 sts (C); 5 sts (A); 2 sts (B); [7 - 8 - 11 - 12 - 18 - 19 - 22 - 24 sts] (A). At [10.75" - 11" - 11.5" - 12" - 12.25" - 12.5" - 13" - 13.5"] of Pattern (chart 2), work body and sleeves simultaneously following Pattern (A) for sleeves. Use needles 8 to pick up on each side [34 - 34 - 35 - 35 - 35 - 35 - 37 - 37 sts.]. At [6.75" - 7" - 7.5" - 8" - 8.25" - 8.75" - 9" - 9.5"] BO all sts and set piece aside.

Front - same as back

Assembly and finishing

Use tapestry needle to close left sleeve [9.5" - 9.5" - 10" - 10" - 10" - 10" - 10.25" - 10.25"] and left shoulder [7.5" - 7.5" - 8" - 8" - 8.25" - 8.25" - 8.75" - 8.75"]. Leave right sleeve and shoulder open to make collar.

Collar

Use needles 11 to pick up sts around neckline [87 - 87 - 90 - 90 - 93 - 93 - 93 - 93 sts]. Work in 3x3 Rib st - chart 1 and rep sts [7" - 7" - 8" - 8" - 8" - 8.75" - 8.75" - 8.75"]. BO all sts with a tail for sewing (approx. 21.75"). Insert this tail into tapestry needle and close collar, right shoulder and sleeve. Leave bottom part of sleeves open to make cuffs.

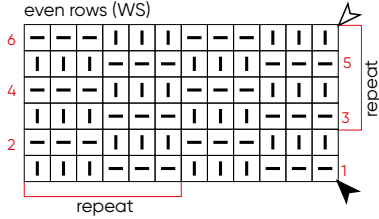
Cuffs

Use needles 11 to pick up in each sleeve [54 - 59 - 63 - 66 - 69 - 72 - 75 - 78 sts], work in 3x3 Rib sts - chart 1 and rep sts for [1.5" - 1.5" - 1.5" - 2" - 2" - 2" - 2"]. BO all sts. Use tapestry needle to close cuffs, sleeves and sides.

Masala Pullover

Chart 1 - 3x3 Rib st

Note: odd rows (RS)
even rows (WS)



Stitch key



1/1 RC (RT) - sl 1 st onto cn,
hold in back, k1, k1 from cn.



3/3 LC - sl 3 sts onto cn,
hold in front, k3, k3 from cn



3/3 RC - sl 3 sts onto cn,
hold in back, k3, k3 from cn

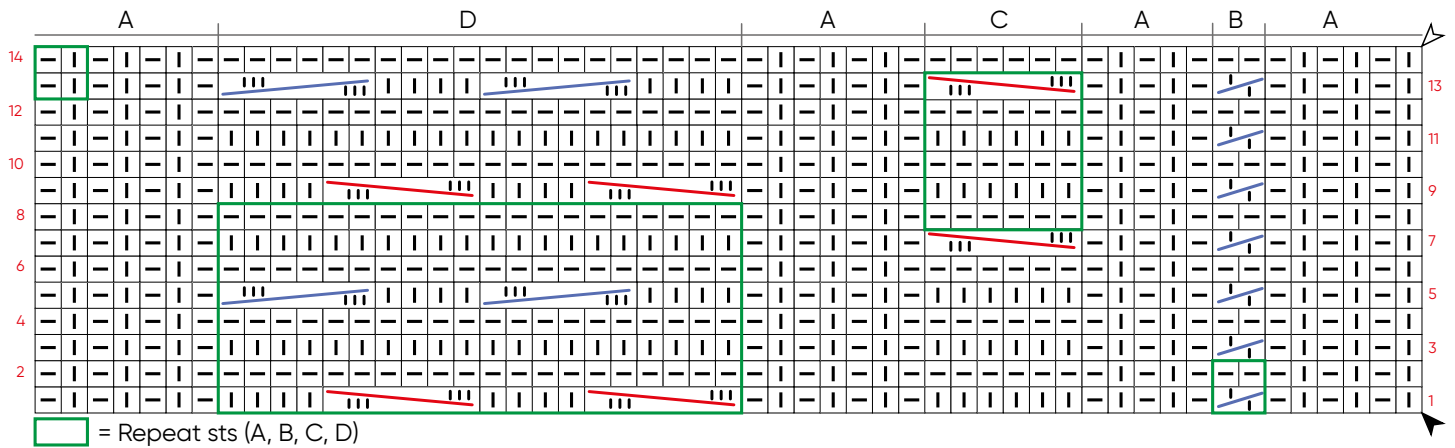
▲ beginning

△ end

↑↑ direction

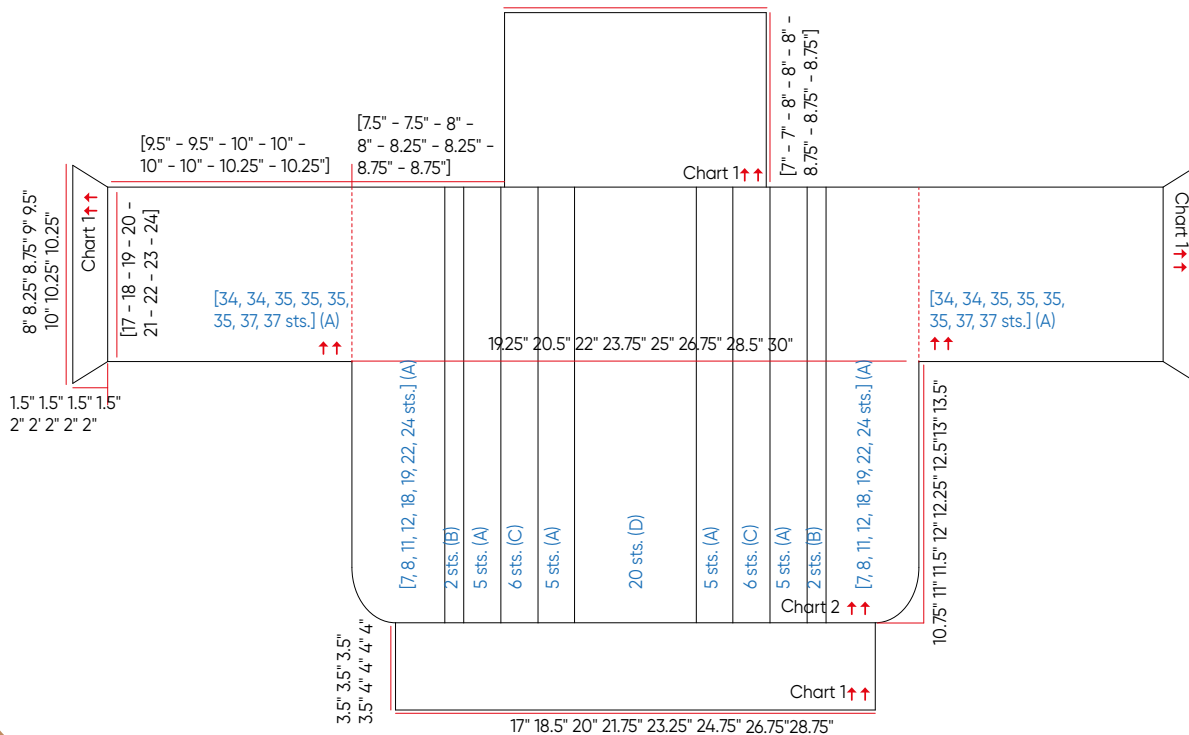
Pattern 2 with variations A B C D

Note: odd rows (RS)
even rows (WS)



Measurement chart for sizes
6 - 8 - 10 - 12 - 14 - 16 - 18 - 20
Back = Front

[12.25" - 12.25" - 12.5" - 12.5" - 13" - 13" - 13" - 13"]



La Belle Scarf



La Belle Scarf

Created by Marcia Dallarosa

Size: 12" x 55"

Level: Intermediate

Material

3 balls of La Belle color 8001.

Knitting needles 8

1 cable needle

Gauge: 22 S x 20 R = 4"/10 cm over

Pattern chart using needles 8.

mk: make

dec: decreases

inc: increases

RS: right side

WS: wrong side

K: knit

P: purl

Garter Stitch: Knit or purl every row.

Every 2 rows

= 1 ridge.

Pattern – follow chart

Stitch glossary and abbreviations:

st: stitches

CO: cast on

BO: bind off

CN: cable needle

rep: repeat

Scarf

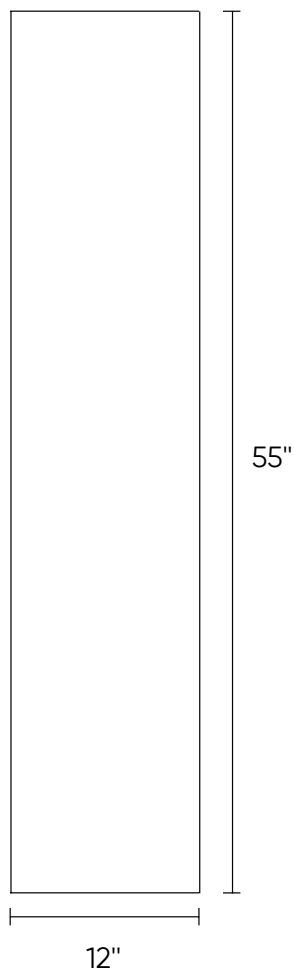
CO 66 sts and work in Garter st for 0.5"

and then work as follows: p2, 62 sts =

Pattern, p2.

At 54.5" work in Garter st for 0.5" and

BO all sts.



Pattern

Stitch key

— = p

$$\square = k$$

7 = 2/2 LC - sl 2 sts onto cn, hold in front,
k2, k2 from cn

WS = knit the knit stitches and purl the purl stitches.

Repeat from * to *

Cozy Cardigan



Cozy Cardigan

Created by Milla Vieira

Size: 6

Level: Intermediate

Material

7 skeins of Harmony color 7650.

Knitting needles 8 & 10

5 light brown buttons - approx. 2.5" diameter

Gauge: 20 S x 22 R = 4"/10 cm over Pattern chart.

Tip: Transfer measurement chart to paper to guide you along. Arrows indicate direction.

Disclaimer

Measurements are approximate due to differences between centimeters and inches, needle sizes and tension (gauges). All care has been taken to allow accurate completion of the pattern

Stitch glossary and abbreviations:

st: stitches

CO: cast on

BO: bind off

rep: repeat

mk: make

dec: decreases

inc: increases

RS: right side

WS: wrong side

K: knit

P: purl

1x1 Rib: Row 1: *K1, P1*. Row 2 and all other rows: knit

the knit stitches and purl the purl stitches.

Pattern: follow chart.

Back

CO 103 sts onto needles 8. Work in 1x1 Rib st. At 8.75" switch to needles 10 and follow

Pattern chart and rep sts. At 15.75" from the beginning start armhole shaping: BO 4 sts and 2 sts (2x) on each side every 2 rows. At 23.75" from the beginning BO all sts.

Right front

CO 60 sts onto needles 8 and work in 1x1 Rib st. Distribute 5 buttonholes (k2tog and inc 2 sts in the next row). Mk first buttonhole at 6 sts from right border, approx. 3.25" from the beginning. Mk other buttonholes 3.5" apart.

At the same time at 3.25" from the beginning switch to needles 10 and work as follows: 45 sts = Pattern (follow chart) and 15 sts in 1x1 Rib st. At 15" from the beginning work in 1x1 Rib st and mk 1 st lean dec every 2 rows (14x).

Note: to lean Rib mk 1 more st in 1x1 Rib st and 1 less st in Pattern. At 15.75" start armhole shaping:

BO 4 sts and 2 sts (2x) on the left side every 2 rows. At 23.75" from the beginning BO the Pattern sts on the left and continue working in 1x1 Rib st for 4 more inches and then BO all sts.

Left front - mirror right front.

Sleeves (mk 2)

CO 58 sts onto needles 8 and work in 1x1 Rib st.

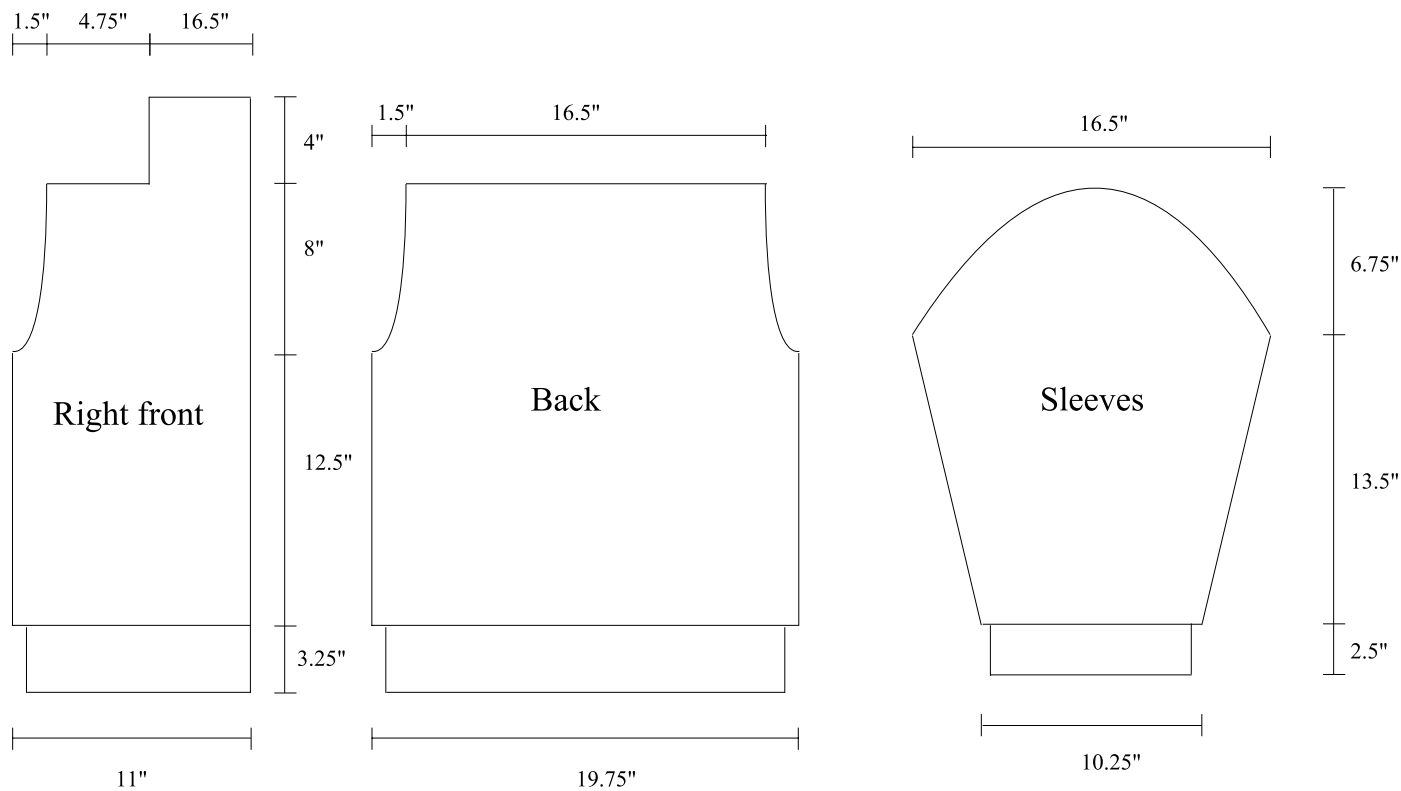
At 2.5" from the beginning switch to needles 10 and follow Pattern chart and rep sts.

Inc 1 st (12x) every 6 rows. At 15.75" from the beginning start armhole shaping: BO 3 sts, 2 sts (2x) and 1 st (14x) every 2 rows. At 22.5" from the beginning BO all sts.

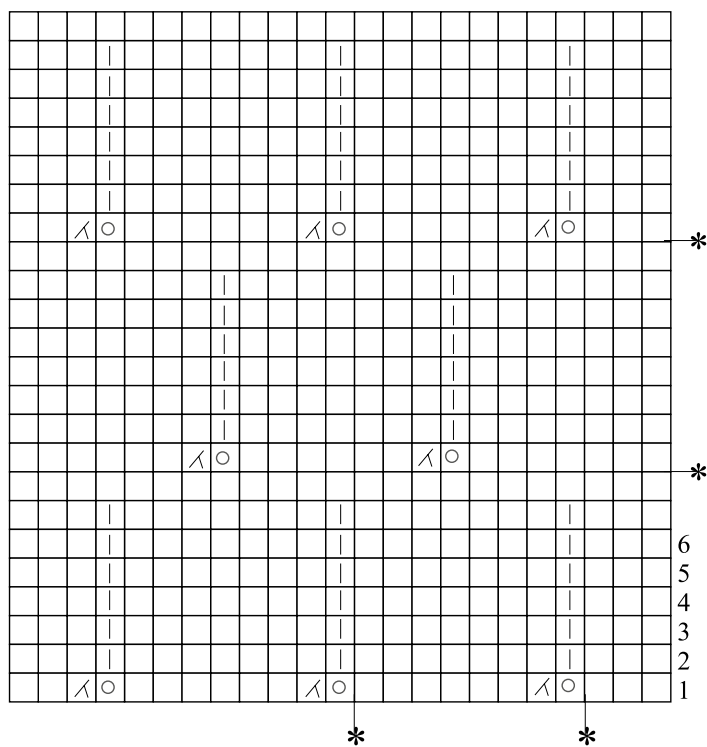
Assembly and finishing:

Join collar edges and then sew collar onto back. Sew sleeves and mk a pleat to adjust sleeve onto armhole. Sew sides and buttons on the left front mirroring buttonholes.

Cozy Cardigan



Pattern



Stitch key

- | = k = RS, p = WS.
- = p = RS, k = WS
- = yo
- ∧ = k2tog

WS = on chart
Rep from * to *

Comfy Cardigan for Kids



Comfy Cardigan for Kids

Created by Gorete Andrade

Age: 4 years

Level: easy

Material

5 skeins of Angora color 7134

Knitting needles 13.

2 cable needles

Gauge: 11 S x 20 R = 4" / 10 cm in Garter st using needles 13.

Tip: Transfer measurement chart to paper to guide you along. Arrows indicate direction.

Disclaimer

Measurements are approximate due to differences between centimeters and inches, needle sizes and tension (gauges). All care has been taken to allow accurate completion of the pattern

Stitch glossary and abbreviations:

st: stitches

CO: cast on

BO: bind off

CN: cable needle

rep: repeat

mk: make

dec: decreases

inc: increases

RS: right side

WS: wrong side

K: knit

P: purl

Garter Stitch: Knit or purl every row. Every 2 rows = 1 ridge.

Front and back

Are worked simultaneously up to armholes. CO 62 sts onto needles 13. Work in Garter st. Inc 2 sts (2x) and 1 st (3x) on each side every 2 rows. At 11" from the beginning start armhole shaping: 18 sts = right front, BO 2 sts, 36 sts = back, BO 2 sts, 18 sts for left front. Work sides separately.

Back continuation

Work with back sts and slip remaining sts to CN. Continue working in Garter st. BO 1 st (2x) on each side every 2 rows. At 16.5" from the beginning BO all sts.

Right front continuation

Return the 18 sts of right front and continue working in Garter st. BO sts on the left side as back. At 15" from the beginning start neckline shaping: BO 3 sts (2x) and 1 st on the right every 2 rows. At 16.5" from the beginning BO all sts.

Left front continuation - mirror right.

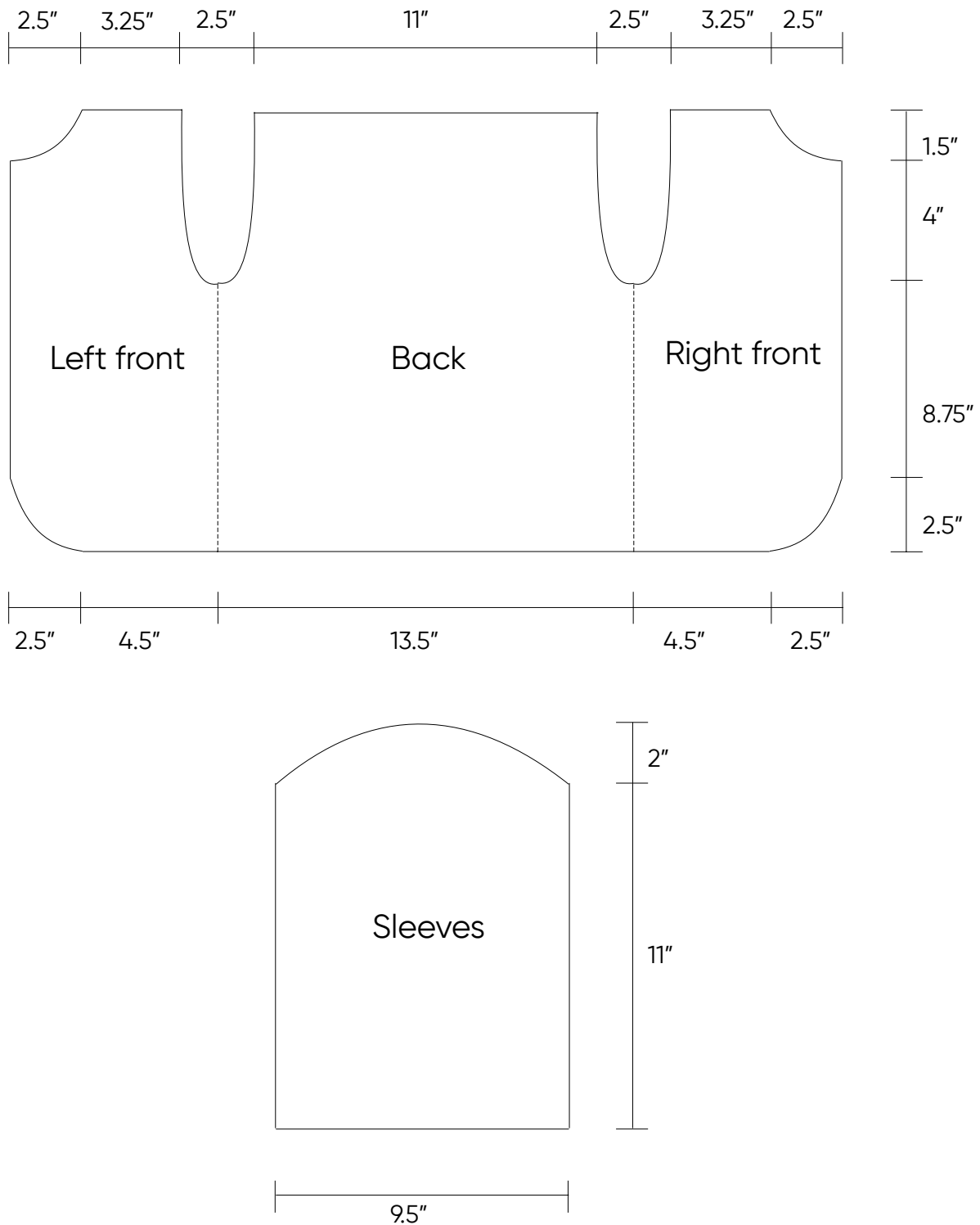
Sleeves (mk 2)

CO 26 sts onto needles 13 and work in Garter st. At 11" from the beginning start armhole shaping: BO 3 sts and 2 sts (3x) on each side every 2 rows. At 13" from the beginning BO remaining sts.

Assembly and finishing

Sew shoulders. Collar: Use needles 13 to pick up 50 sts along front and back neckline. Work in Garter st for 3.25" and BO all sts. Close sleeves and sew them onto body.

Comfy Cardigan for Kids



Chocolate beanie and scarf set



Chocolate beanie and scarf set

Created by Circulo studio

Size: Scarf 19.75" x 71" long

Beanie 8" circumference x 10.75" long

Level: Easy

Material

5 skeins of Imperial color 608

Knitting needles 10

Tapestry needle, measuring tape and scissors.

Gauge: 18 S x 24 R = 4"/10 cm in Garter st using needles 10.

Disclaimer

Measurements are approximate due to differences between centimeters and inches, needle sizes and tension (gauges). All care has been taken to allow accurate completion of the pattern

Stitch glossary and abbreviations:

st: stitches

CO: cast on

BO: bind off

rep: repeat

mk: make

dec: decreases

inc: increases

RS: right side

WS: wrong side

K: knit

P: purl

Garter Stitch: Knit or purl every row. Every 2 rows = 1 ridge.

Beanie: CO 72 sts onto needles 10. Work in Garter st for 10". Start decreasing to form

top.

Mk 1 decrease row in k2tog (36x) = 36 sts onto needles.

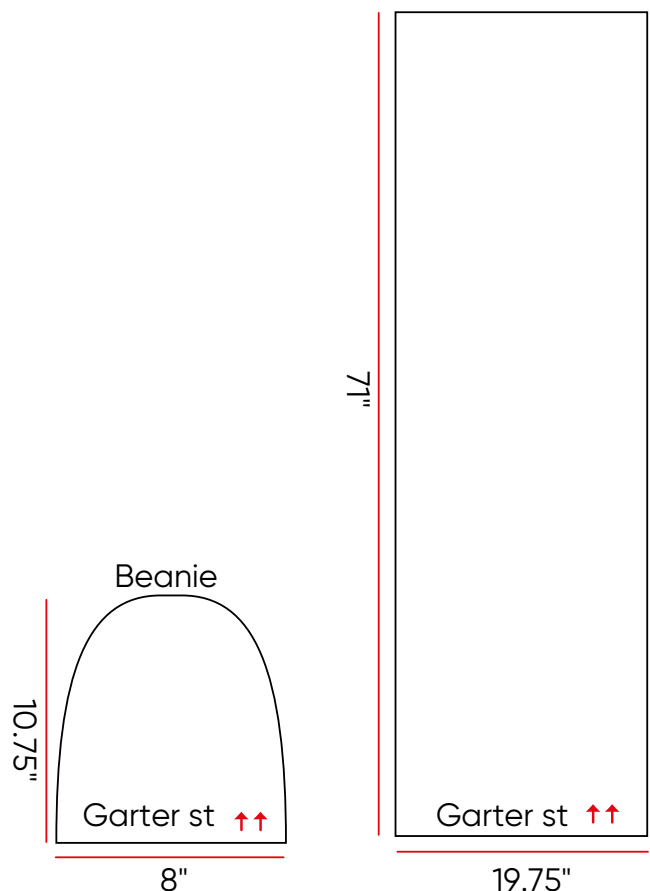
WS: p2tog (18x) = 18 sts onto needles.

RS: k2tog (9x) = 9 sts. Cut yarn with a tail = 15.75". Insert this tail into tapestry needle and into the remaining 9 sts, pull tightly and sew side (10.75")

Scarf

CO 90 sts onto needles 10. Work in Garter st for 71". BO all sts.

Measurement chart
Scarf



Ember long cardigan



Ember long cardigan

Created by Rita Tricoll

Size: 6

Level: Intermediate

Material

12 skeins of La Seda color 4817

Knitting needles 8

Tapestry needle

Paper, pencil, measuring tape and scissors.

Gauge: 15 S x 24 R = 4"/10 cm in Seed st (chart 2) using needles 8.

Tip: Transfer measurement chart to paper to guide you along. Arrows indicate direction.

Disclaimer

Measurements are approximate due to differences between centimeters and inches, needle sizes and tension (gauges). All care has been taken to allow accurate completion of the pattern

Stitch glossary and abbreviations:

st: stitches

CO: cast on

BO: bind off

rep: repeat

mk: make

dec: decreases

inc: increases

RS: right side

WS: wrong side

K: knit

P: purl

2x2 Rib st – follow chart 1

Seed st – follow chart 2

Back

CO 110 sts onto needles 8. Work in 2x2 Rib st – chart 1 and rep sts for 1.25". Follow

chart 2 – Seed st and rep sts for 21.75" and start armhole shaping: inc 15 sts on each side = 140 sts. At 34" from the beginning BO all sts.

Right front

CO 36 sts onto needles 8. Work in 2x2 Rib st – chart 1 and rep sts for 1.25". Follow chart 2 – Seed st and rep sts for 21.75" and start armhole shaping: inc 15 sts on the left side = 51 sts. At 34" from the beginning BO all sts.

Left front – mirror right front.

Right front/half back border.

CO 38 sts onto needles 8. Work in 2x2 Rib st – chart 1 and rep sts. At 23.25" from the beginning start increasing on the right side: 4 sts every 10 rows (7x) = 66 sts. At 39.75" from the beginning BO all sts. Note: The last 6" will work as half of back neckline. See measurement chart.

Left front/half back border – mirror right.

Shoulder and borders assembly:

Use tapestry needle to sew shoulders and sleeves (13.5"). Sew borders onto right & left front and back neckline (6") on each side of back. Centralize the 10.25" borders on back.

Cuffs (mk 2)

Use needles 8 to pick up 62 sts onto sleeves edges. Work in 2x2 Rib st – chart 1 and rep sts. At 2" start decreasing 2 sts every 8 rows (5x) = 42 sts. At 11" from the beginning BO all sts.

Finishing

Close sleeves (4"), cuffs (11") and sides (21.75")

Ember long cardigan

Chart 1 - 2x2 Rib st

Note: odd rows (RS)
even rows (WS)

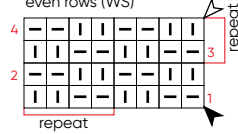
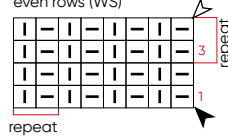


Chart 2 - Seed st

Note: odd rows (RS)
even rows (WS)

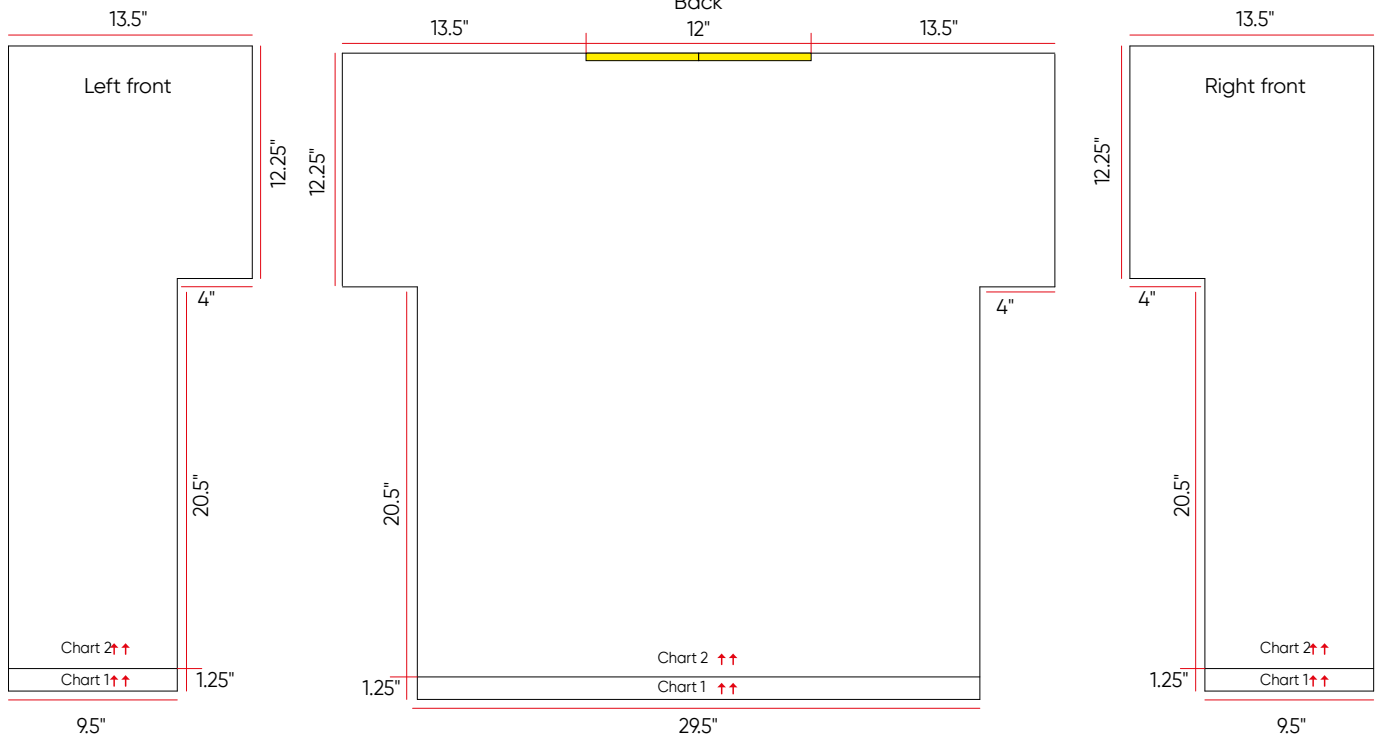


Stitch key

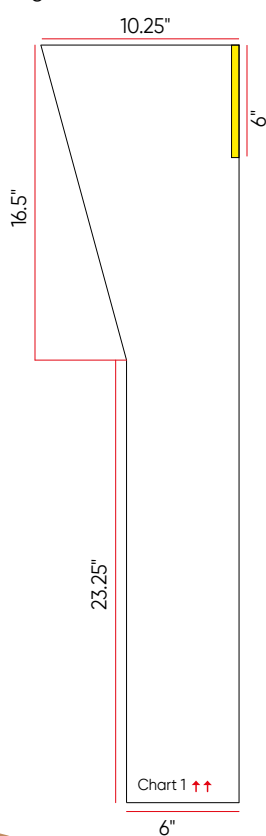


▲ beginning
△ end
↑↑ direction

Measurement chart



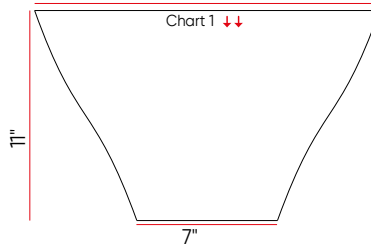
Right front/half back border.



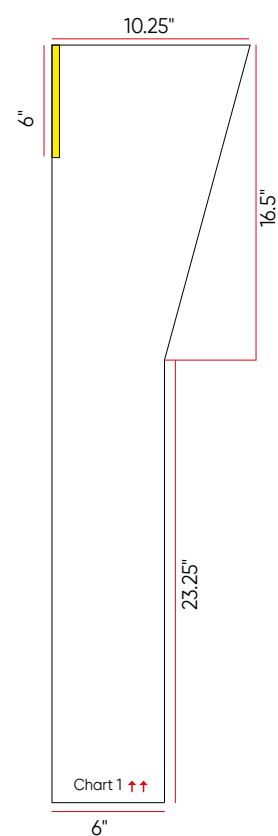
Cuff

16.5"

Chart 1 ↓↓



Left front/half back border.



Madeira capelet



Madeira capelet

Created by Isamar Eberdobler

Size: 6

Level: intermediate

Material

6 skeins of Frise color 7393

Circular knitting needles 15 (29" long)

Tapestry needle

Paper, pencil, measuring tape and scissors.

Gauge: 7 S x 13 R = 4"/10 cm in Garter st using needles 15.

Tip: Transfer measurement chart to paper to guide you along. Arrows indicate direction.

Disclaimer

Measurements are approximate due to differences between centimeters and inches, needle sizes and tension (gauges). All care has been taken to allow accurate completion of the pattern

Stitch glossary and abbreviations:

st: stitches

CO: cast on

BO: bind off

rep: repeat

mk: make

dec: decreases

inc: increases

RS: right side

WS: wrong side

K: knit

P: purl

Garter Stitch: Knit or purl every row. Every 2 rows = 1 ridge.

Short row turn: Hold yarn on back, sl next st to right needle, hold yarn on front, sl the previous st to left needle and continue row.

Capelet

CO 50 sts onto circular needles 15. Work in Garter st and short rows. Odd rows = RS and even rows = WS. Piece will be knitted sideways. Work as follows:

*Rows 1, 2, 3, 4, 11, 12, 13, 14, 21, 22, 23, 24: p50.

Row 5: p45, short row turn.

Row 6: p45.

Row 7: p40, short row turn.

Row 8: p40.

Row 9: p35, short row turn.

Row 10: p 35.

Row 15: p30, short row turn.

Row 16: p30.

Row 17: p25, short row turn.

Row 18: p25.

Row 19: p20, short row turn.

Row 20: p20.

Row 25: p15, short row turn.

Row 26: p15.

Row 27: p10, short row turn.

Row 28: p10.

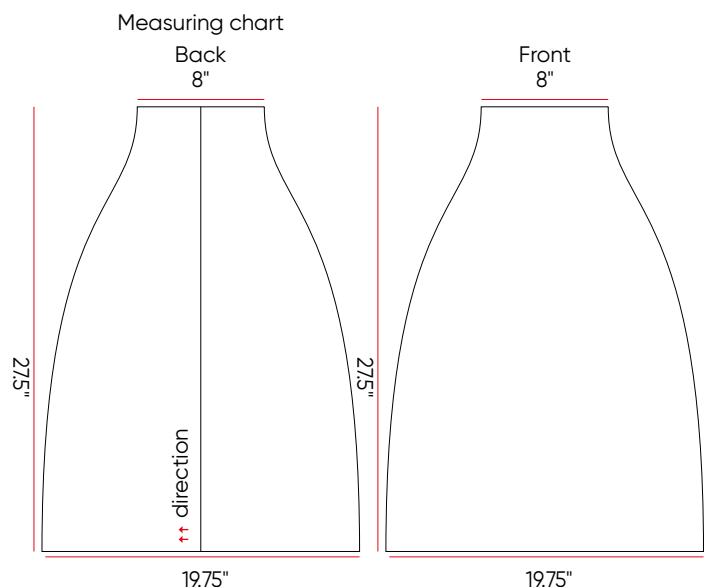
Row 29: p5, short row turn.

Row 30: p5*.

Rep from * to * 3 more times and after one more sequence from rows 1 - 14 = total of 134 rows. The remaining 50 sts will be BO with tapestry needle when closing piece. Leave a tail approx. 1 yd.

Assembly and finishing

Fold piece in half. Insert tail into tapestry needle and BO individually the remaining 50 sts and then close piece.



Hooded Poncho



Hooded Poncho

Created by Vilma Maurer

Age: 4 years

Level: Intermediate

Material

3 skeins of Diamante baby color 2918.

Knitting needles 2

Crochet hook B-1

Pompom maker = approx. 2.75"

Gauge: 22 S x 20R = 4"/10 cm in Irish Moss st using needles 2.

Tip: Transfer measurement chart to paper to guide you along. Arrows indicate direction.

Disclaimer

Measurements are approximate due to differences between centimeters and inches, needle sizes and tension (gauges). All care has been taken to allow accurate completion of the pattern

Stitch glossary and abbreviations:

st: stitches

CO: cast on

BO: bind off

CN: cable needle

rep: repeat

mk: make

dec: decreases

inc: increases

RS: right side

WS: wrong side

K: knit

P: purl

Garther Stitch: Knit or purl every row. Every 2 rows = 1 ridge.

Stockinette Stitch: Knit RS rows and Purl WS rows.

1x1 Rib: Row 1: *K1, P1*. Row 2 and all other

rows:

knit the knit stitches and purl the purl stitches.

Irish Moss st: Row 1: *k1, p1*

Rows 2 and 4: knit the knit sts and purl the purl sts.

Row 3: *p1. k1*

Rep rows 1 – 4 to create pattern.

Crochet sts:

chain: ch

single crochet: sc

Front and back are worked continuously.

CO 79 sts onto needles 2 and work in 1x1 Rib st. At 1.25" from the beginning distribute 78 increases in one row and work as follows: 25 sts = Irish Moss st, k2, 25 sts = Irish Moss st, k2, 49 sts = Irish Moss st, k2, 25 sts = Irish Moss st, k2, 25 sts = Irish Moss st. Mk 1 yo on each side of the k2 (6x) every 2 rows and 1 yo (19x) every 4 rows. At 17.5" from the beginning work all sts in Garther st and BO all sts at 18.25".

Hood

CO 29 sts onto needle 2 and work in 1x1 Rib st for 6.25". BO all sts. Pick up 129 sts along sides and the part where you worked in 1x1 Rib st.

Work in Irish Moss st for 7", work 0.75" in Garther st and BO all sts.

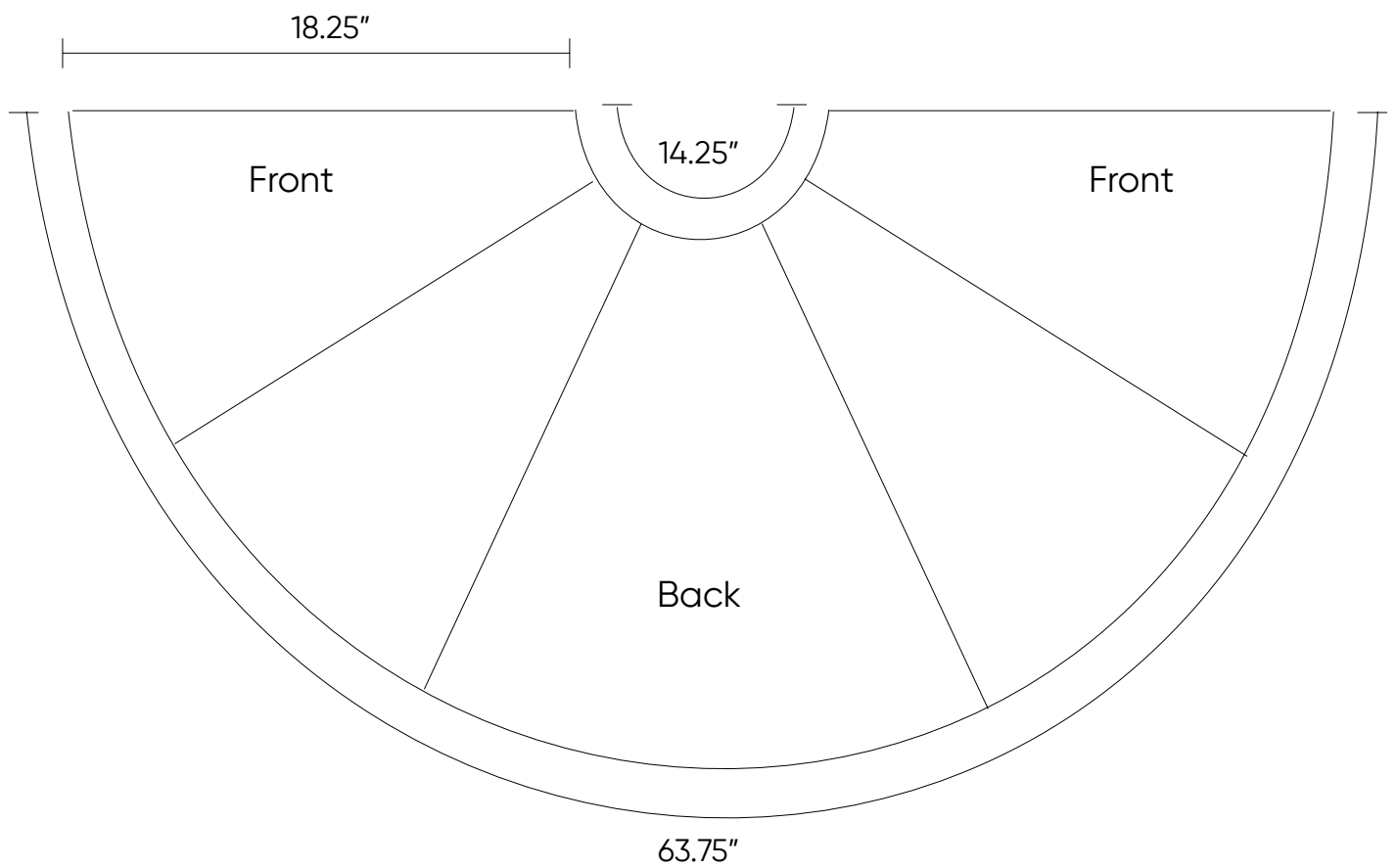
Assembly and finishing:

Sew hood along neckline. Sew 12.5" on front.

Use crochet hook to mk 1 rnd in sc around front opening parts, around hood trim and hemline.

Fasten off. Mk 2 pompoms. Mk 2 twisted cords – 10" finished. Join 1 pompom in each edge. Into last row of poncho in 1x1 Rib st.

Hooded Poncho



Verbena short Kaftan



Verbena short Kaftan

Created by Mariane Machado

Size: 6

Level of difficulty: Advanced

Material

7 skeins of Verbena color 9808

Circular knitting needles 10.5 (29")

Crochet hook H-8

Tapestry needle

2 cable needles

Paper, scissors and measuring tape.

Gauge: 12 S x 18 R = 4"/10 cm over chart 3
Pattern using needles 10.5.

Tip: Transfer measurement chart to paper to guide you along. Arrows indicate direction.

Disclaimer

Measurements are approximate due to differences between centimeters and inches, needle sizes and tension (gauges). All care has been taken to allow accurate completion of the pattern

Stitch glossary and abbreviations:

st: stitch

CO: cast on

BO: bind off

CN: cable needle

rep: repeat

mk: make

dec: decreases

inc: increases

RS: right side

WS: wrong side

K: knit

P: purl

Crochet sts:

sl st: slip stitch

sc2tog: 2 sc closed together in different base sts

Back

CO 80 sts onto needles 10.5.

Rows 1 – 8: Garter st – chart 1. Inc 1 st on each side on every row (7x) = 94 sts. Work as follows: border with 5 sts in 1x1 Rib st – chart 2, 84 sts = pattern – chart 3, 5 sts = 1x1 Rib st – chart 2. Inc 1 st every 6 rows before and after borders (3x). At 10.25" work as follows: border with 5 sts in Garter st – chart 1, 90 sts = pattern – chart 3, 5 sts in Garter st – chart 1. At 20" from the beginning work on shoulder shaping: BO 11 sts every 2 rows (3x). At 22" from the beginning, slip the 34 central sts to CN to make collar later.

Front: work as back.

Right side: CO 28 sts onto needles 10.5.

Rows 1 – 8: Garter st – chart 1. inc 1 st on each side (6x) = 40 sts. Work as follows: border with 5 sts = 1x1 Rib st – chart 2, 30 sts = pattern – chart 3, 5 sts in 1x1 Rib st – chart 2. Dec 1 st before and after borders every 6 rows (6x) = 28 sts. At 9.5" from the beginning end with 4 rows in Garter st – chart 1. At 10.25" from the beginning BO all sts and set piece aside.

Left side: same as right.

Assembly & finishing: Use tapestry needle to close shoulders (12"), leave right shoulder open to make collar.

Collar: Return the 34 sts of back and the 34 sts of front = 68 sts. Work in 1x1 Rib st – chart 2. At 10" from the beginning BO all stitches, leave a tail for sewing (25.5").

Finishing: Insert this tail into tapestry needle and close collar (9") and right shoulder (12"). Sew sides (right & left) under arms (10").

Verbena short Kaftan

Chart 1 - Garter st

Note: odd rows (RS)
even rows (WS)

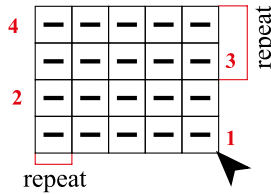
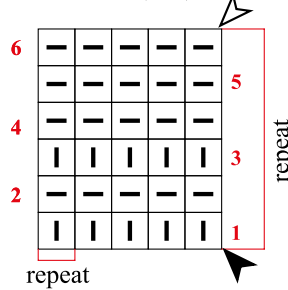


Chart 3 - Pattern

Note: odd rows (RS)
even rows (WS)



Stitch key



k

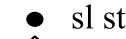


p

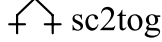
Crochet stitch key



ch



sl st



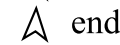
sc2tog



direction



beginning



end

Chart 2 - 1x1 Rib st

Note: odd rows (RS)
even rows (WS)

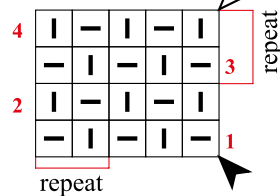
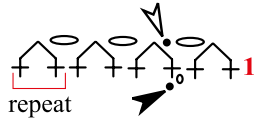
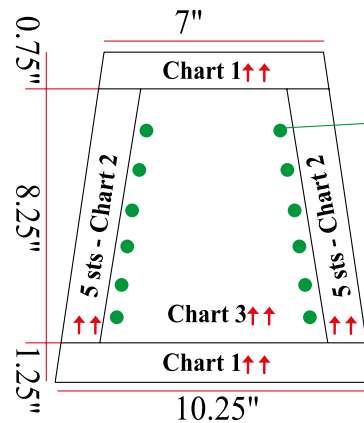


Chart 4 -
crochet edge

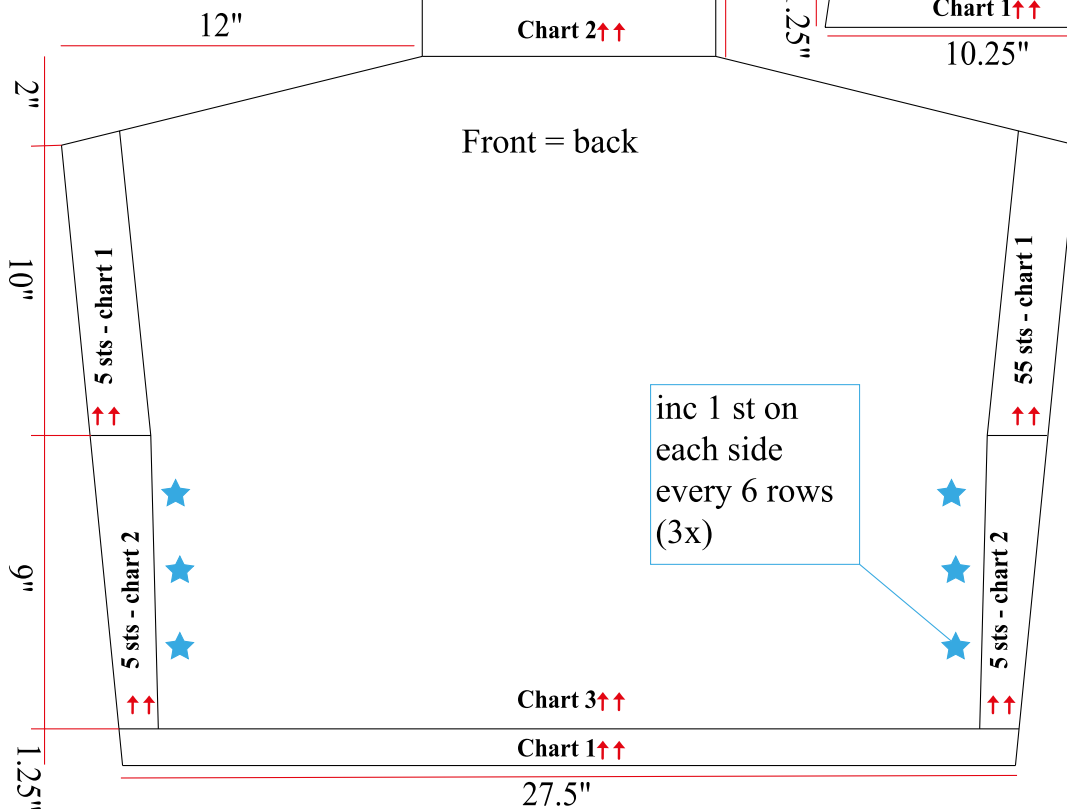


Measurement chart
9.5"

Right side = left side



dec 1 st on
each side
every 6 rows
(6x)



Blue cables twin set



Blue cables twin set

Created by Silvana Salles Swerts.

Size: 6

Level: Advanced

Material

8 skeins of Hobby color 512

Circular knitting needles 10 & 10.5 (29" long)

3 Cable needles

Stitch markers in different colors

Tapestry needle

Paper, pencil, measuring tape and scissors.

Gauge: 16 S x 20 R = 4"/10 cm in St st (chart 5) using needles 10.5.

Tip: Transfer measurement chart to paper to guide you along. Arrows indicate direction.

Disclaimer

Measurements are approximate due to differences between centimeters and inches, needle sizes and tension (gauges). All care has been taken to allow accurate completion of the pattern

Stitch glossary and abbreviations:

st: stitches

CO: cast on

BO: bind off

CN: cable needle

rep: repeat

mk: make

dec: decreases

inc: increases

RS: right side

WS: wrong side

K: knit

P: purl

1x1 Rib st (in the round) - follow chart 1

Pattern A (in the round) - follow chart 2

1x1 Rib st (back & forth) - follow chart 3

St st (back and forth) - follow chart 4

Pattern B (back & forth) - follow chart 5

Top

Start at hemline. Knit in the round. Front and back are worked simultaneously.

CO 130 sts onto circular needles 10. Work in 1x1 Rib st - chart 1 and rep sts for 1.25". Inc 10 sts (alternating) in the last row of rib = 140 sts. Switch to circular needles 10.5 and follow pattern A - chart 2 and rep sts for 8.25". Switch back to needles 10 and end piece in 1x1 Rib st - chart 1 and rep sts until 9.5". BO.

Straps (mk 2)

Knit back and forth.

Join yarn at 3.25" from side. Pick up 6 sts onto needles 10 and work in 1x1 Rib st - chart 3 and rep sts for 16.25". BO leaving a tail (approx. 8").

Insert this tail into tapestry needle and sew strap onto back.

Cardigan

Right/left fronts and back are worked simultaneously. Knit back and forth. Start at hemline.

CO 142 sts onto circular needles 10. Work in 1x1 Rib st, chart 3 and rep sts for 2". Switch to needles 10.5" and work as follows: 5 sts (border - chart 3), 132 sts in St st - chart 4, 5 sts (border - chart 3). At 12" work back, left & right fronts separately. Slip 36 sts onto CN, leave 70 sts onto needles and slip 36 sts onto CN.

Back continuation - 70 sts

Work in St st (chart 4). Start armhole shaping: Dec 3 sts (1x) and 1 st (2x) on each side every 2 rows. At 21.75" from the beginning BO.

Right front continuation

Return the 36 sts to circular needles 10.5 and work as follows: 5 sts (border - chart 3, 31 sts (St st - chart 4). Start armhole and neckline shaping simultaneously. Armhole: dec 3 sts (1x) and 1 st (2x) on the left side every 2 rows. Neckline: dec sts on the right side after the border (5 sts): 1 st (2x) every 2 rows, 1 st (2x) every 4 rows and 1 st (2x) every 6 rows. At 21.75" from the beginning BO the 20 sts (shoulder) and keep working on the 5 sts of border for 6.25" more. BO.

Note: this is the back neckline.

Left front continuation

Return the 36 sts to circular needles 10.5 and work as follows: 31 sts (St st - chart 4), 5 sts (border - chart 3). Start armhole and neckline shaping simultaneously. Armhole: dec 3 sts (1x) and 1 st (2x) on the right side every 2 rows. Neckline: dec sts on the left side before the border (5 sts): 1 st (2x) every 2 rows, 1 st (2x) every 4 rows and 1 st (2x) every 6 rows. At 21.75" from the beginning BO the remaining 25 sts.

Sleeves (mk 2)

Start at cuff. Knit back and forth.

CO 34 sts onto needles 10. Work in 1x1 Rib st for 2". Inc 50 sts (alternating) at the last row of Rib = 84 sts. Switch to needles 10.5, follow Pattern B - chart 5 and rep sts. At 8" from the beginning inc 1 st on each side every 6 rows (6x) = 96 sts. At 17.75" BO all sts.

Assembly and finishing

Use tapestry needle to sew shoulders (5.25"), sew strap onto back (6.25"). Close sleeves (17.75") and sew them onto body.

Blue cables twin set

Chart 1 - 1x1

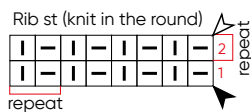


Chart 2 - Pattern A

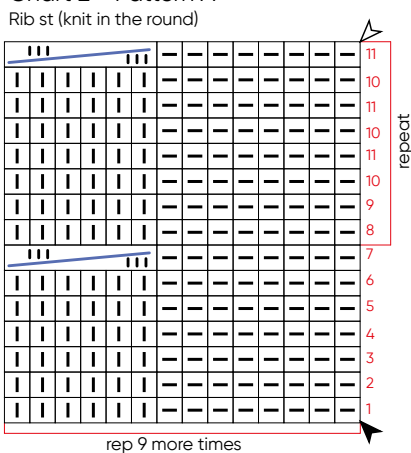


Chart 3 - 1x1 Rib st

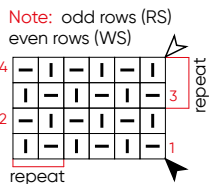


Chart 4 - Stockinette st

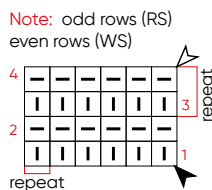
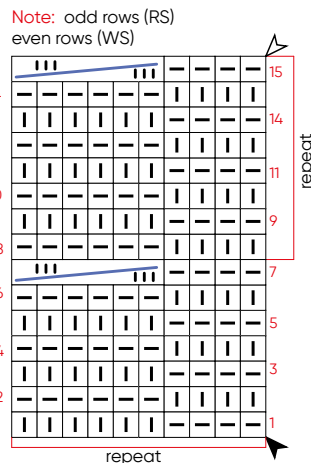


Chart 5 - Pattern B



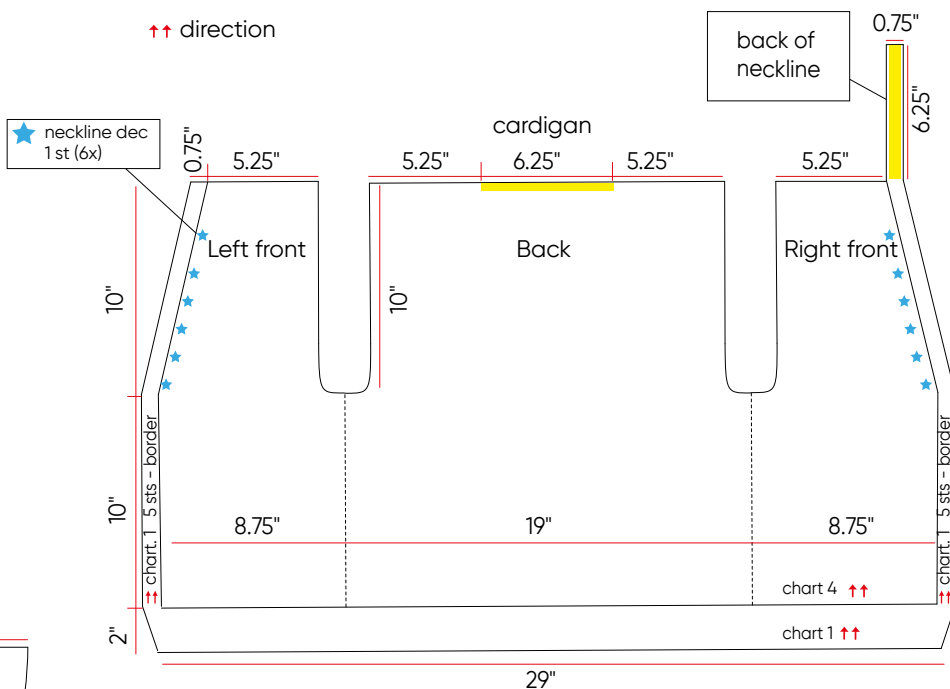
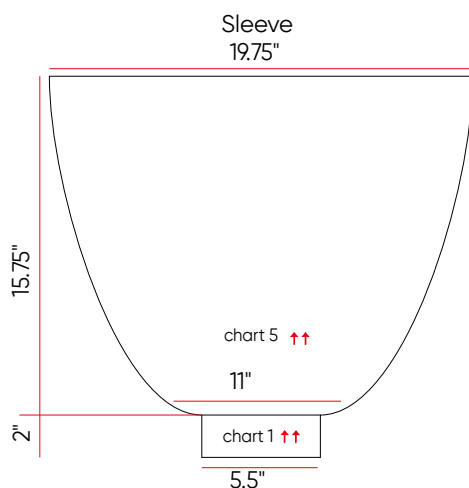
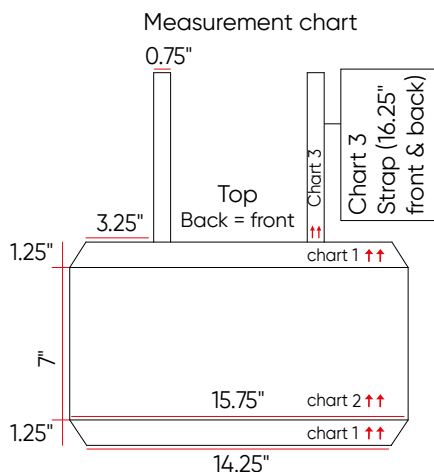
Stitch key



3/3 RC - sl 3 sts onto cn,
hold in back, k3, k3 from cn

▲ beginning ▲ end

↑↑ direction



CÍRCULO

www.circuloyarns.com

  /circulo.usa