


SUMMER

E-BOOK

4 EXCLUSIVE PATTERNS

Dive into the summer **wave of trends!** In the 2023 Summer E-book, you will find **exclusive patterns** to make stylish pieces and enjoy the breeze and heat of the season with the best of the **handmade universe!** Check out the colors and designs that will be on the rise and rock your summer!

CÍRCULO



One thing is sure, **handmade pieces** are the trend of the hottest season of the year! And this summer, trends in the fashion world will embrace handmade clothes even more!

That's because **comfort and beauty** are still the focus of the season. And let's agree that crochet yarns fit like a glove in this regard, right?

That's why we developed this material with **4 exclusive patterns** for you to rock in different places and occasions.

Use **comfortable yarns**, special bikinis, and designs with varied colors for this season.

Options will not be lacking to enjoy the sunny days and the summer breeze with **style and originality!**

Disclaimer: Measurements are approximate due to differences between centimeters and inches, needle sizes, and tension. All care has been taken to allow accurate completion of the pattern. All care has been taken to ensure the accuracy of our patterns; the occasional error is inevitable though. We apologize for any inconvenience. Please if you find any error or have any questions about patterns send an email to: patternsupport@circulo.com.br



Turquoise dress

Turquoise Dress

Created by: Luciana Panza

Size: 6

Level: Intermediate

Material

Circulo yarns - Charme

4 balls color #2194 turquoise

Crochet hook C-2 or D-3 or size to obtain gauge

1 6" turquoise zipper

Fabric to line dress

Turquoise sewing thread and needle

Tapestry needle, scissors and measuring tape

Stitch glossary and abbreviations:

stitch: st

make: mk

skip: sk

chain: ch

slip st: sl st

single crochet: sc

double crochet: dc

dc2tog: 2 dc closed tog in different base sts

2 dc cluster: 2 dc closed tog in the same base st

3 dc cluster: 3 dc closed tog in the same base st

back post double crochet: BPdc

Increase: inc

decrease: dec

round: rnd

end of row/rnd: eor.

Cup: follow chart 1

Pattern A: follow chart 2

Pattern B: follow chart 3

Pattern C: follow chart 4

Crochet edge: follow chart 5

Straps: follow chart 6

Gauge: 21 S x 10 R = 4"/10 cm over Pattern B - chart 2 using hook C-2.

Part 1 - Cups (make 2)

Use hook C-2. Crochet back and forth.

Ch 41.

R1 - 14: follow chart 1.

Once both cups are finished, join them. Use tapestry needle to join R1 & 2 at center on the WS. Use crochet hook C-2 and Charme to join cup sides with 62 chains.

Bodice (Part 1 - 4)

Join yarn on the side of the left cup. Make a total of 144 sts in the cups and chains (62 chains).

Part 2 - Crochet in the round. Close rnds with 1 sl st.

R1 - 11: follow chart 2 and rep sts - Pattern A - 9 motifs.

Part 3 - Crochet back and forth. Left side opening for zipper.

R12 - 24: follow chart 3 and rep sts - Pattern B - 9 motifs.

Part 4 - Crochet in the round. Close rnds with 1 sl st.

R25 - 31: follow chart 2 and rep sts - Pattern A - 9 motifs.

Part 5 - Crochet in the round. Close rnds with 1 sl st. Note: inc 4 sts in each motif in this part.

R32 - 54: follow chart 4 and rep sts - Pattern A - 9 motifs.

End skirt with the crochet edge - chart 5 and rep sts = 57 motifs.

Finishing

Use hook C-2 and Charme to make crochet edges around the cups and back - follow chart 5 and rep sts = 24 motifs on each cup and 11 motifs in the back.

Straps (make 2)

Crochet back and forth.

Join Charme at the top of cup.

R1 - 25: follow chart 5

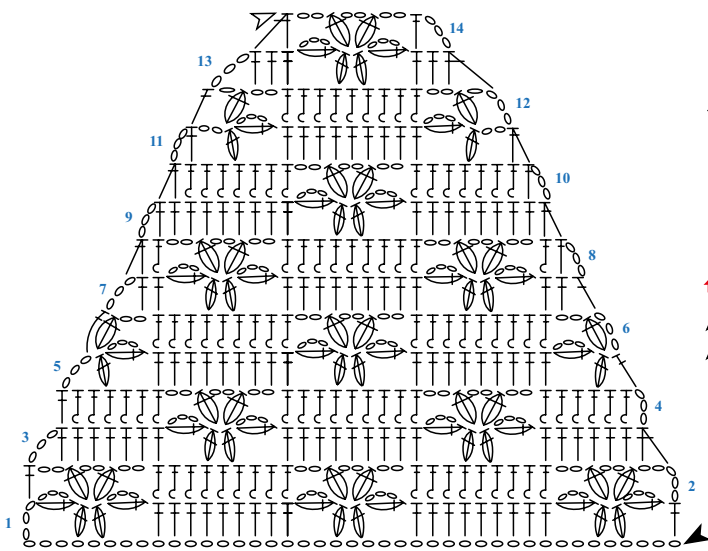
Join this strap onto back at 2.75" from the side.

Note: See stars on the measurement chart to join straps onto back.

Lining

Use crochet dress as a template to make slip to wear underneath. Sew slip around cups, back and around zipper.

Chart 1 - Cup



Stitch key

- ch
- + sc
- sl st
- ⊥ dc
- ⊥ dc2tog
- ⊥ 2 dc cluster
- ⊥ 3 dc cluster
- ⊥ BPdc
- ↑↑ direction
- ▲ beginning
- △ end

Chart 2 - Pattern (A)

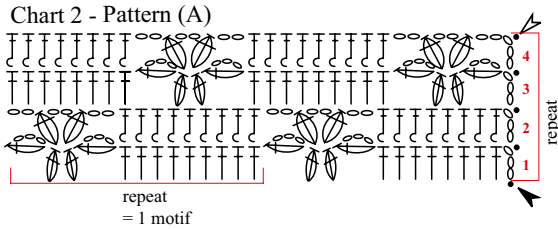


Chart 3 - Pattern (B)

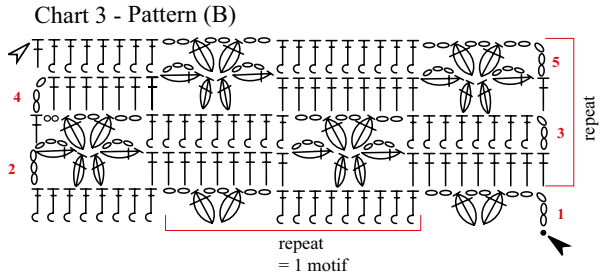
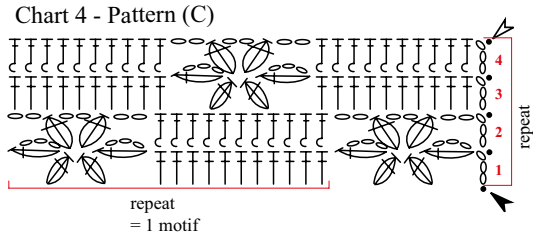


Chart 4 - Pattern (C)



Measurement chart

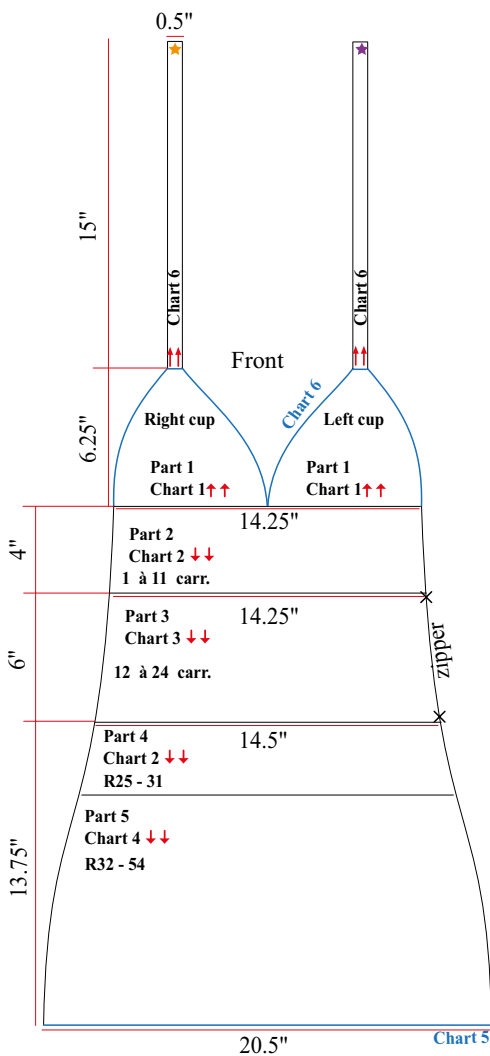


Chart 5 - Crochet edge

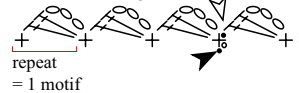
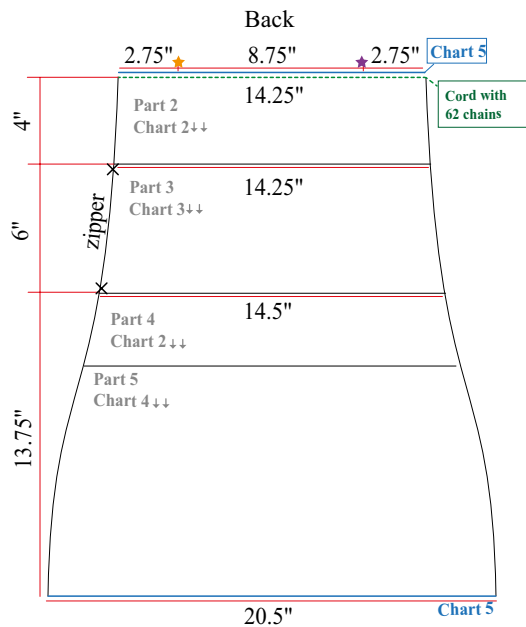
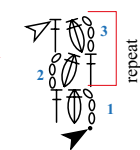


Chart 6 - Strap





Bordeaux bikini

Bordeaux Bikini

Created by: Genessi Lehmann

Size: 18

Level: Intermediate

Materials

Circulo yarns - Anne

2 balls color #3694 bordeaux

Crochet hook 1.75 mm

Bikini clasp (back)

36" of elastic cord in the same color (bordeaux)

Fabric to line set

Tapestry needle, scissors and measuring tape

Stitch glossary and abbreviations

stitch: st

make: mk

skip: sk

chain: ch

slip st: sl st

single crochet: sc

double crochet: dc

double crochet back loop only: dc-BLO

double crochet front loop only: dc-FLO

Increase: inc

decrease: dec

round: rnd

end of row/rnd: eor.

Bottom - follow chart 1

Waistband - follow chart 2

Top - part 1 & 2 - follow chart 3

Side strap - follow chart 4

Top strap - follow chart 5

Gauge: 27 S x 13 R = 4"/10 cm over bottom - chart 1 - part 1 using hook 1.75 mm.

Bottom (Part 1)

Crochet back and forth. **Start at front.**

Ch 15. R1: ch 3, 14 dc. R2 - 25: follow chart 1. Once chart is completed, fasten off. **Back:** Join yarn into the front's foundation chain. Crochet back and forth. R1 - 29: follow chart 1. **Assembly and finishing:** Fold piece into front and back and join sides with 42 chains = 280 sts to make waistband.

Waistband - Part 2

Crochet in the round. Close rnds with 1 sl st.

Join yarn into side of back and follow chart 2.

R1 - 11: 280 sts

R12: 240 sts

R13 & 14: 232 sts

R15: 232 sc hiding elastic cord.

Make 1 rnd in sc around leg holes. Fasten off.

Lining

Use crochet bottom as a template. Cut fabric and sew it on the wrong side.

Top

Right cup

Part 1 - start at the top. Crochet back and forth. Ch 12.

R1: ch 3, 7 dc, ch 2, 8 dc.

R2 - 15: follow chart 3.

Part 2 - follow chart 3

R16 - 26: 73 sts each

Side strap (make 2)

Join Anne at the side of cup.

Crochet back and forth.

R1 - 32: follow chart 1. Once chart is completed, fasten off. Leave a tail for sewing (approx. 8").

Insert this tail into tapestry needle and sew the bikini clasp onto edges.

Top strap (make 2)

Join Anne at the top of cup.

Crochet back and forth.

R1 - 160: follow chart 5 and rep sts. Fasten off.

Note: Criss-cross onto back and wrap around bust line and make a bow on back.

Cup finishing

Make 1 row in sc on the sides and at the bottom of each cup.

Cord

Join yarn at the bottom of cup and chain for 17".

Note: this cord will join cups at center on front.

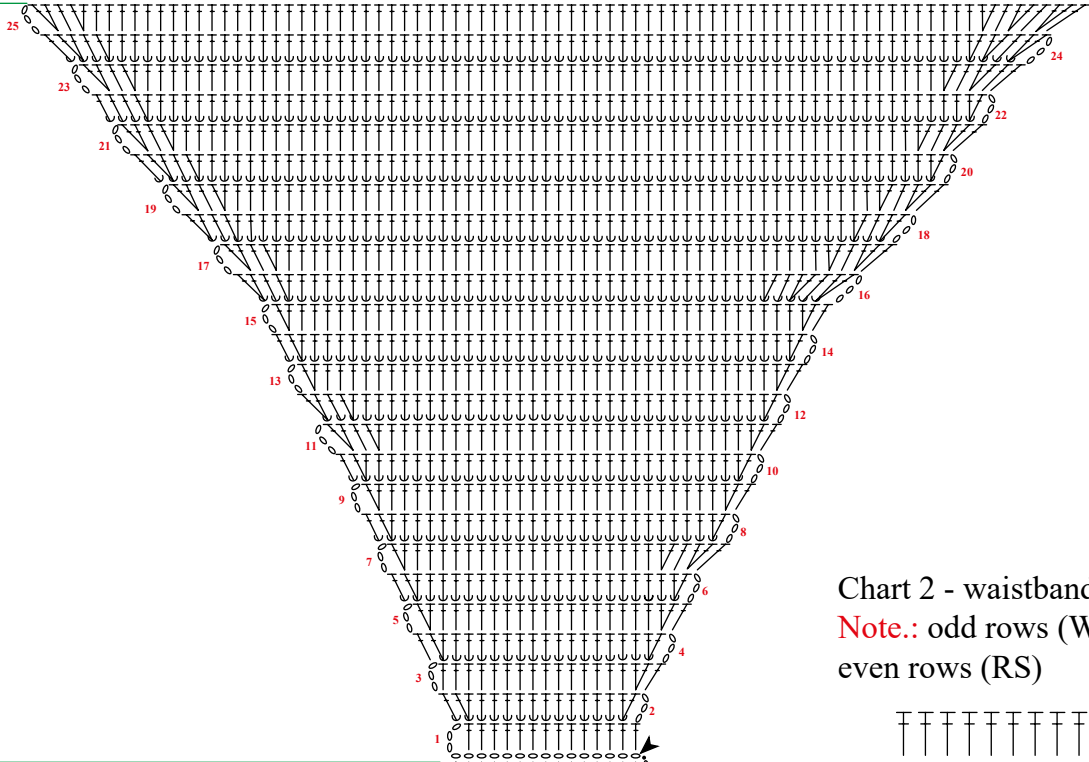
Left cup - mirror right

Lining

Use crochet cups as templates. Cut fabric (part 1 & 2) and sew it on the wrong side of each cup.

Chart 1 - bottom - Part 1

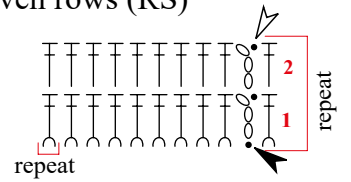
Note.: odd rows (WS)
even rows (RS)



- Stitch key
- ch
 - sl st
 - + sc
 - ┆ dc
 - ┆ dc (BLO)
 - ┆ dc (FLO)
 - ↑ direction
 - ▲ beginning
 - △ end

Chart 2 - waistband - part 2

Note.: odd rows (WS)
even rows (RS)



front

back

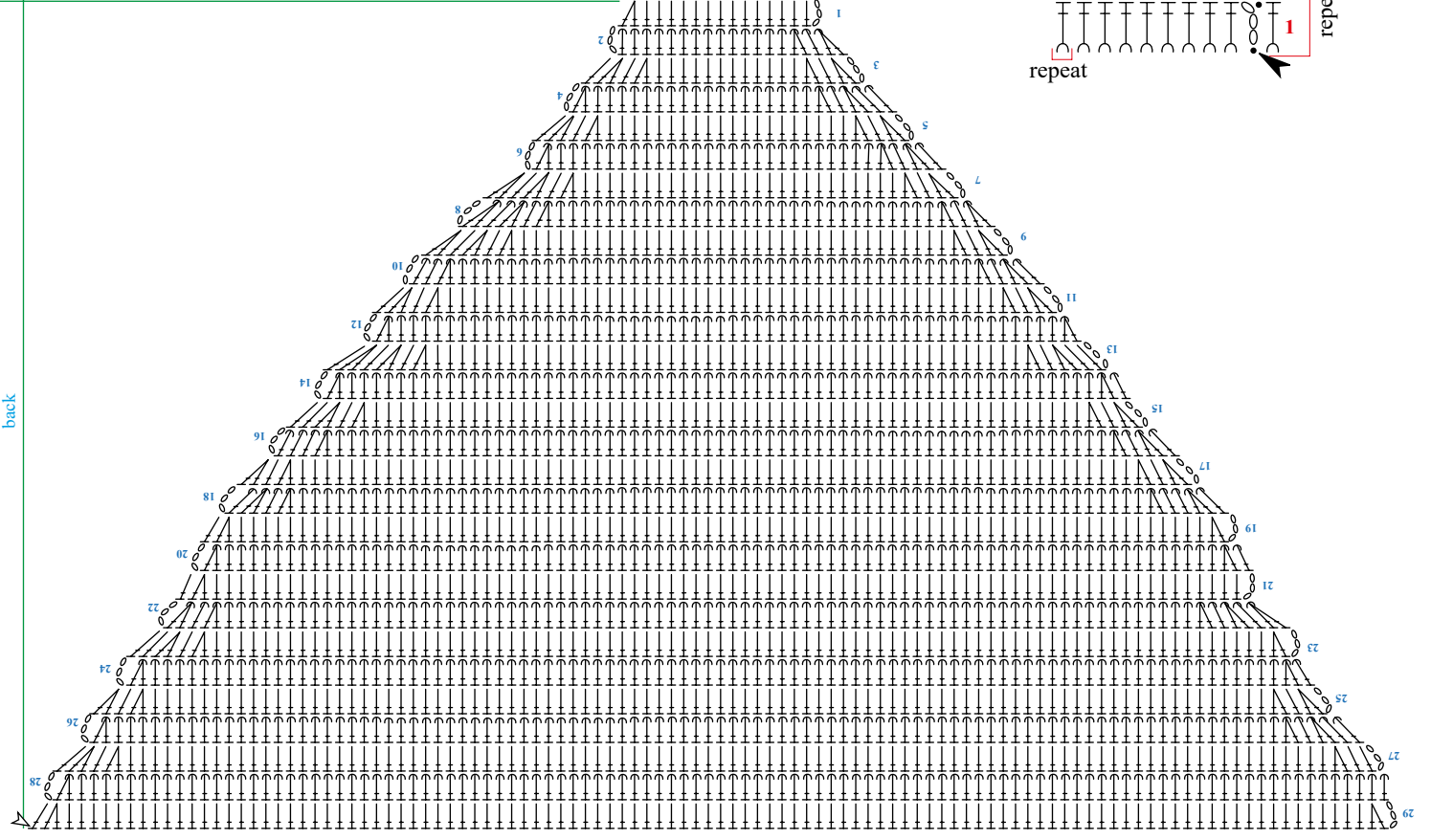


Chart 3 - Cup - Part 2

Note: odd rows (WS)
even rows (RS)

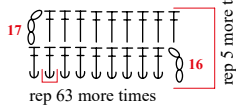


Chart 3 - Cup - Part 1

Note: odd rows (WS)
even rows (RS)

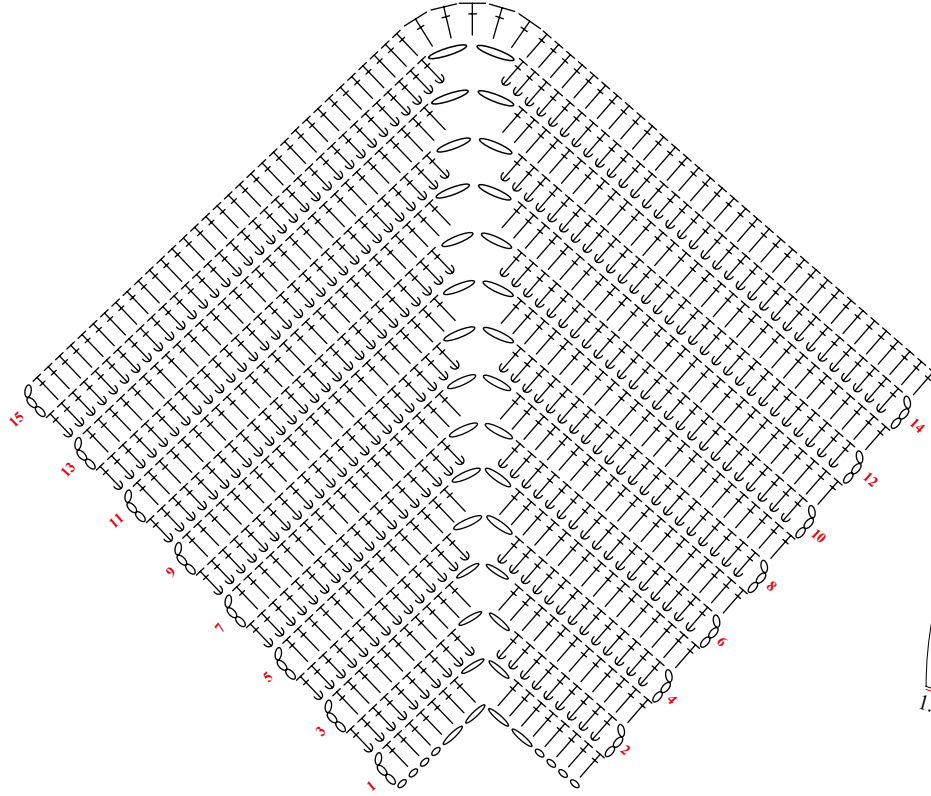


Chart 5 - Top strap

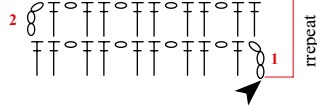
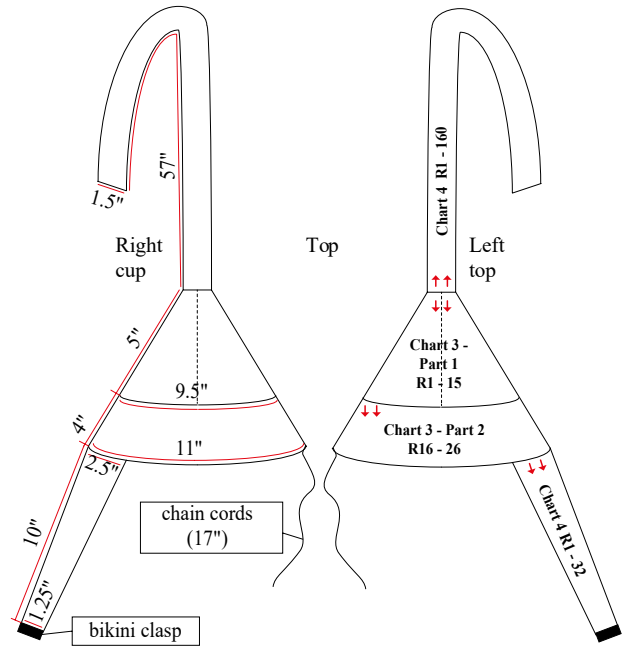
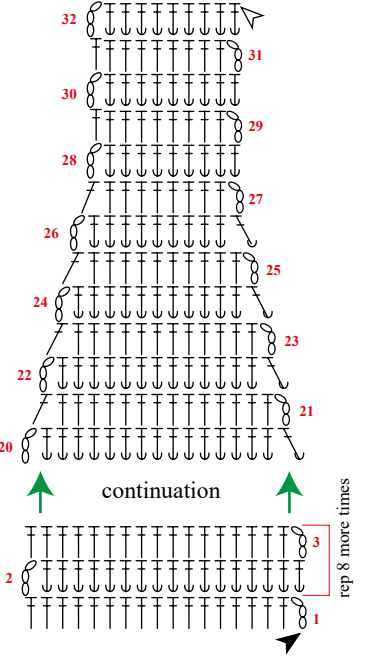


Chart 4 - side strap

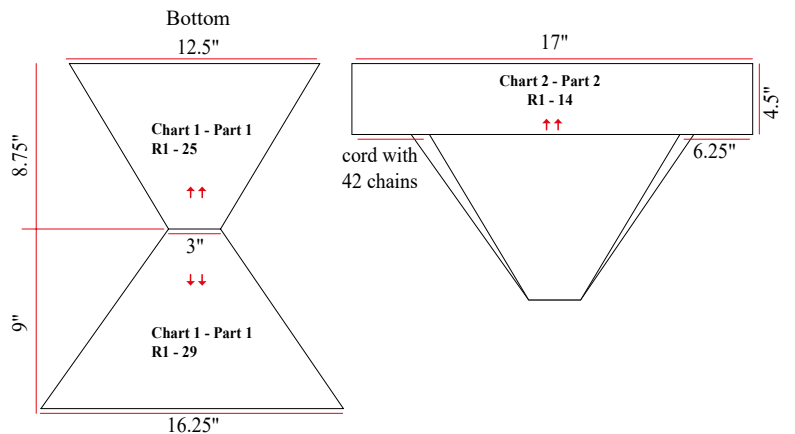
Note: odd rows (WS)
even rows (RS)



Stitch key

- ch
- sl st
- + sc
- ┆ dc
- ┆ dc (BLO)
- ┆ dc (FLO)
- ↑↑ direction
- ▲ beginning
- ▽ end

Measurement chart





*Dark Cheddar
beach cover-up*

Dark Cheddar beach cover-up

Created by: Samara Varela

Size: 18

Level: Easy

Material

Circulo yarns - Encanto Slim

6 balls color #4131 dark cheddar

Crochet hook C-2

Tapestry needle, scissors and measuring tape

Stitch glossary and abbreviations:

stitch: st

make: mk

skip: sk

chain: ch

slip st: sl st

single crochet: sc

double crochet: dc

dc2tog: 2 dc closed tog in different base sts.

Increase: inc

decrease: dec

round: rnd

end of row/rnd: eor.

Pattern - Parts 1, 2 & 3 - follow charts.

Gauge: 23 S x 10 R = 4"/10 cm over Pattern - chart 1 - part 1 using hook C-2.

Beach cover-up Part 1

Front and back are worked simultaneously.

Start at hemline. Crochet back and forth. Ch

216. R1 - 12: follow pattern - chart 1 and rep sts (6 edge sts + 204 sts = 34 motifs + 6 edge sts).

R13: dec 2 motifs on front and 2 motifs on back = 30 motifs. R14 - 41: continue following chart 1 -

Pattern

Part 2

Front and back are worked simultaneously.

Crochet in the round. Close rnds with 1sl st.

R42 - 70: follow chart 2 and rep sts (30 motifs).

Part 3

Flatten piece and divide into front and back.

Work each side separately. crochet back and forth.

R71 - 94: follow chart 3 - dec 1 motif on each side to from armholes.

When both panels are completed, use tapestry needle to join straps (1")

Finishing

Make 1 rnd in sc around neckline, armholes and hemline.

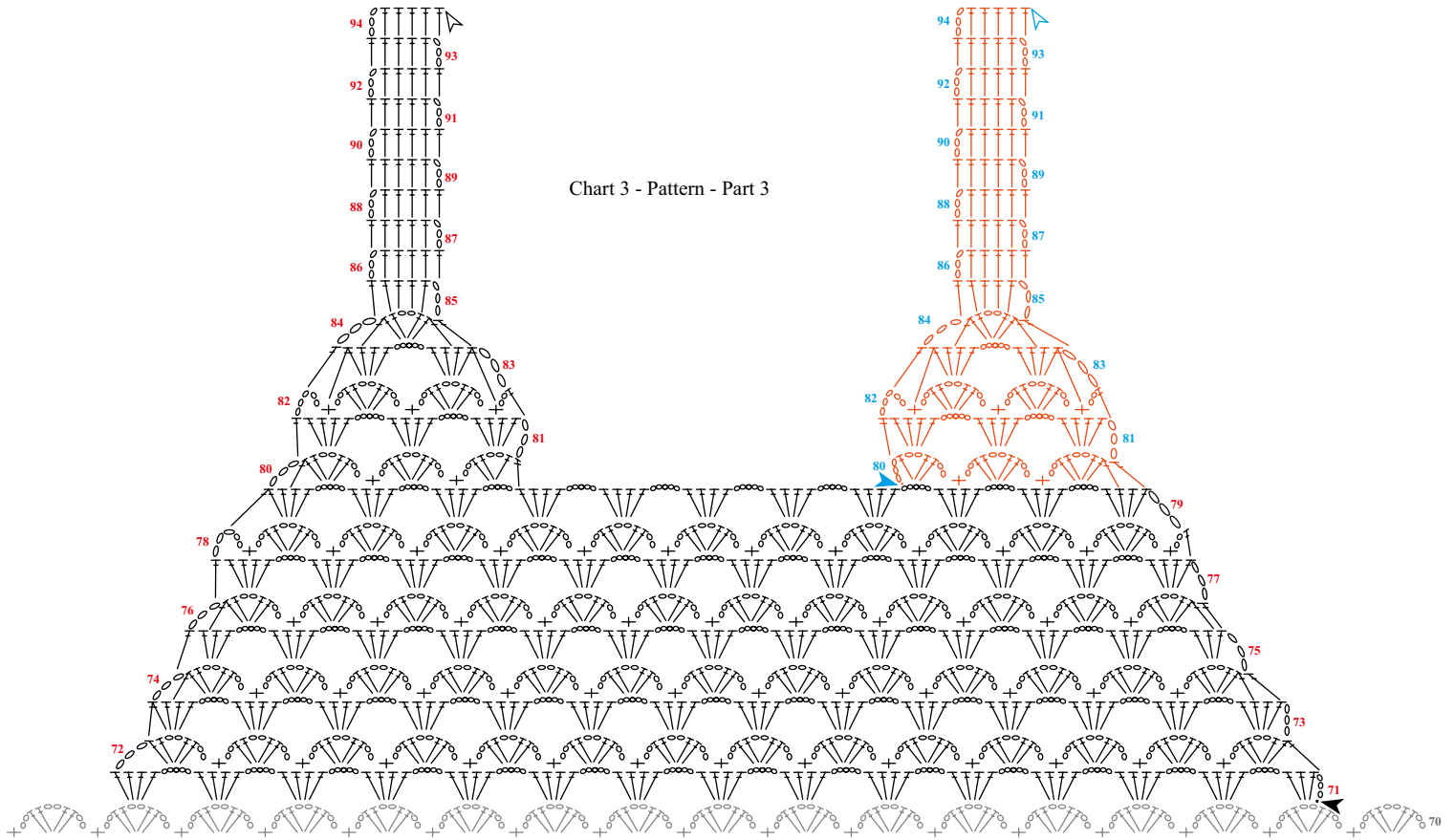


Chart 3 - Pattern - Part 3

Chart 2 - Pattern - Part 2

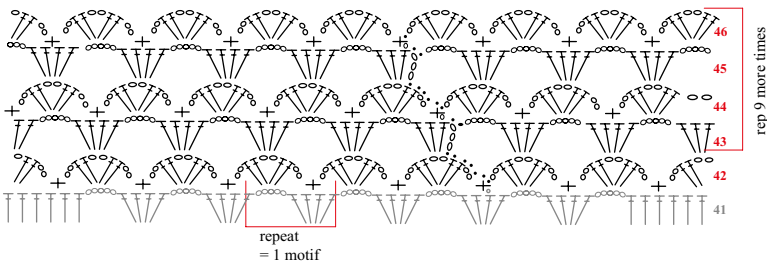
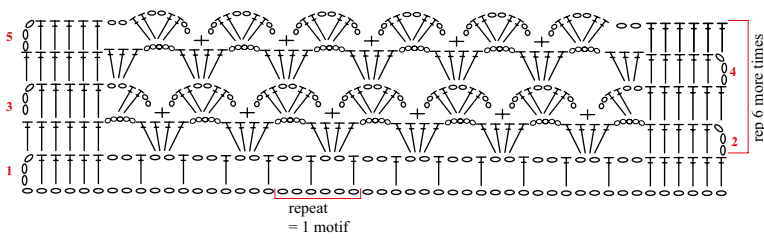


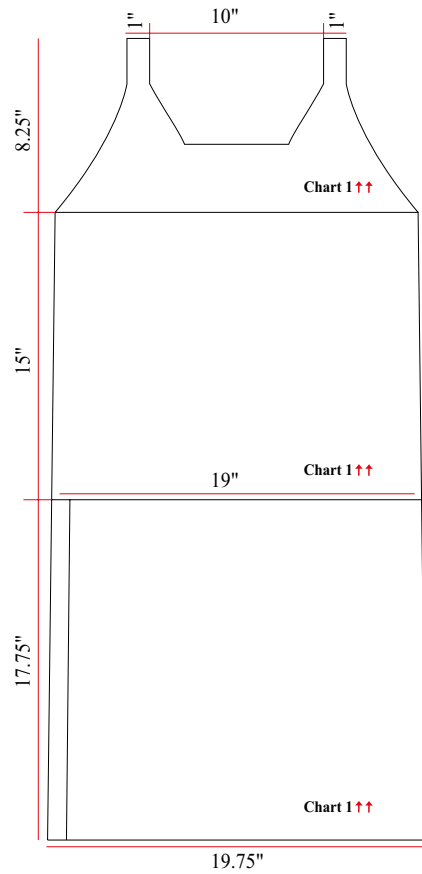
Chart 1 - Pattern - Part 1



Stitch key

- ch
- sl st
- + sc
- ┆ dc
- ∧ dc2tog
- ↑↑ direction
- ▲ beginning
- △ end

Measurement chart
Front = Back





Envelope beach cover-up



Envelope beach cover-up

Created by: Samara Varella

Size: 6

Level: Intermediate

Material

Circulo yarns - Anne

1 ball in each color #2194 turquoise #3583 cherry #4456 orange #5398 moss, and #6133 pink

Crochet hook C-2

Tapestry needle, scissors and measuring tape

Stitch glossary and abbreviations:

stitch: st

make: mk

skip: sk

chain: ch

slip st: sl st

single crochet: sc

half double crochet: hdc

double crochet: dc

Increase: inc

decrease: dec

round: rnd

end of row/rnd: eor.

Pattern A: follow chart 1

Crochet edge: follow chart 2

Cords: follow chart 3

Gauge: 21 S x 10 R = 4"/10 cm over Pattern A - chart 1 using hook C-2.

Color sequence per row to form striped pattern (back, right front and left front):

Color #5398 moss - Rows: 1, 2, 3, 16, 17, 18, 19, 20, 32, 33, 46, 47, 48, 61, 62, 63, 64, 65, 77, 78, 90, 91 and 92.

Color #2194 turquoise - Rows: 4, 5, 6, 7, 8, 21, 22, 34, 35, 36, 37, 49, 50, 51, 52, 53, 66, 67, 79, 80, 81, 82, 93, 94, 95, 96, and 97.

Color #6133 pink - Rows: 9, 10, 23, 24, 25, 26, 27, 38, 54, 55, 68, 69, 70, 71, 72, 83, 98, 99, and 100.

Color #3583 cherry - Rows: 11, 12, 13, 14, 28, 39, 40, 41, 42, 43, 56, 57, 58, 59, 73, 84, 85, 86, and 87.

Color #4456 orange - Rows: 15, 29, 30, 31, 44, 45, 60, 74, 75, 76, 88, and 89.

Back

Crochet back and forth following color sequence per row. Start at hemline with color #5398 moss.

Ch 100.

R1 - 82: follow chart 1 and rep sts = 100 sts in each row.

R83 - 94: start armhole shaping: dec on each

side in every row: 5 sts (1x), 2 sts (2x), 1 st (2x), 3 sts (1x), 1 st (1x), 2 sts (1x) and 1 st (4x) = 58 sts in R94.

R95 - 99: 58 sts in each row. Fasten off and set piece aside.

Left front

Crochet back and forth following color sequence per row. Start at hemline with color #5398 moss. Ch 48.

R1 - 43: follow chart 1 and rep sts = 48 sts in each row.

R44 - 69: start neckline shaping: inc on the left side in every row: 2 sts (1x), 1 st (1x), 2 sts (3x), 1 st (1x), 2 sts (1x), 1 st (3x), 2 sts (1x), 1 st (2x), 2 sts (2x), 1 st (1x), 2 sts (1x), 1 st (1x), 3 sts (1x), 1 st (2x), 2 sts (1x), 1 st (1x), make 1 row without increases and inc 4 sts (1x) in the next, and 1 st (1x) = 88 sts in R69.

R70: 88 sts.

R71 - 81: start decreases on the left side in each row: 2 sts (1x), 1 st (1x), 2 sts (4x), 4 sts (1x), 2 sts (1x), make 1 row without decreases and dec in the next rows 2 sts (1x) and 5 sts (1x) = 64 sts in R81.

R82: 64 sts.

R83 - 100: dec simultaneously for the neckline on the left side and armhole on the right side.

Neckline R83 - 100: dec 3 sts (1x), 1 st (2x), 2 sts (2x), 1 st (1x), 2 sts (2x), 3 sts (1x), 1 st (8x), and 2 sts (1x).

Armhole R83 - 100: dec 5 sts (1x), 1 st (1x), 3 sts (3x), 1 st (1x), 2 sts (2x), 3 sts (2x), 2 sts (1x), 1 st (6x), and 2 sts (1x). R100: 1 st. Fasten off and set piece aside.

Right front

Crochet back and forth following color sequence per row. Start at hemline with color #5398 moss. Ch 87.

R1 - 68: follow chart 1 and rep sts = 87 sts in each row.

R69: start neckline shaping: inc 1 st on the right side = 88 sts.

R70: 88 sts.

R71 - 81: start decreases on the right side in each row: 2 sts (1x), 1 st (1x), 2 sts (4x), 4 sts (1x), 2 sts (1x), make 1 row without decreases and dec in the next rows 2 sts (1x) and 5 sts (1x) = 64 sts in R81.

R82: 64 sts.

R83 - 100: dec simultaneously for the neckline on the left side and armhole on the right side.

Neckline R83 - 100: dec 3 sts (1x), 1 st (2x), 2 sts (2x), 1 st (1x), 2 sts (2x), 3 sts (1x), 1 st (8x), and 2 sts (1x).

Armhole R83 - 100: dec 5 sts (1x), 1 st (1x), 3 sts (3x), 1 st (1x), 2 sts (2x), 3 sts (2x), 2 sts (1x), 1 st (6x),

and 2 sts (1x). R100: 1 st. Fasten off and set piece aside.

Shoulder assembly

Use color #6133 pink. Join shoulder with ch 7 cord.

Assembly and finishing

Use tapestry needle and colors according to each stripe. Join left front onto back (32"), leave 7.5" open for arms. Join right front onto back 5.25" (from the armhole), leave 0.75" open to insert tie strap of the left front. Sew 26" of the lower part, leave 7.5" open for arms.

Crochet edge

Join color #6133 at hemline and follow Crochet edge chart 2 around hemline (236 sts), right front (224 sts), around neckline (56 sts) and end on the left front (222 sts). Use color #4456 for the second rnd and use color #3583 cherry for the last rnd. Follow the same instructions to work around each armhole with 70 sts.

Right front tie strap

Start with color #6133 pink. Crochet back and forth.

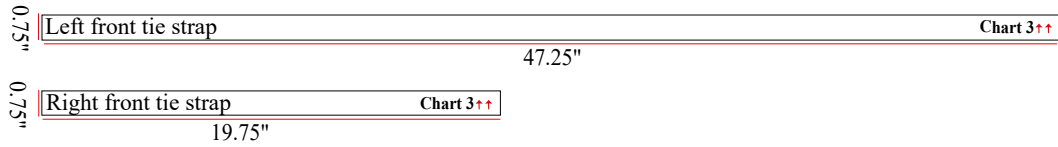
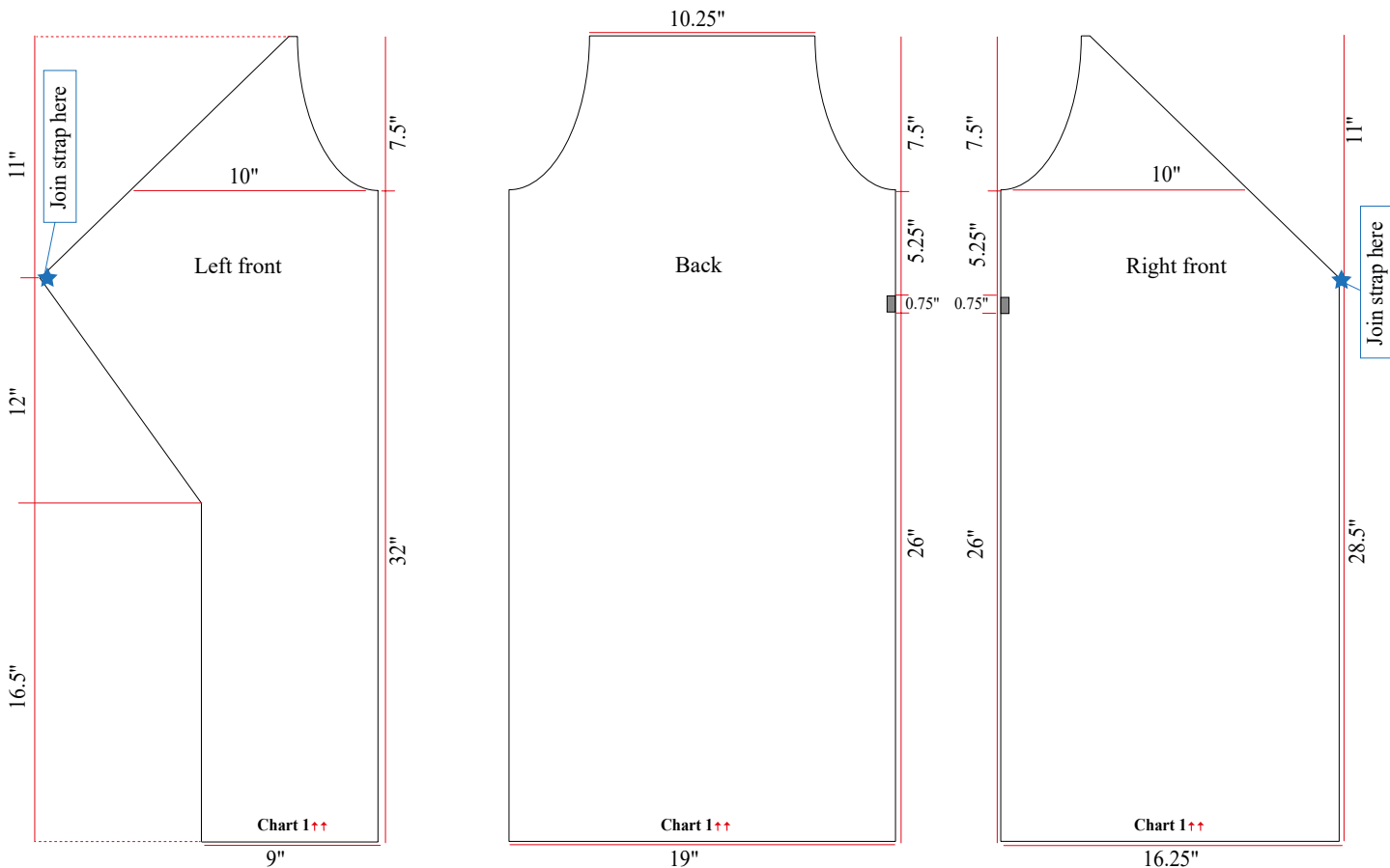
Ch 105. Follow Tie strap chart 3 and rep sts. Use color #4456 for the second row and use color #3583 cherry for the last row. Fasten off with a tail. Insert this tail into tapestry needle and sew this strap onto right front.

Left front tie strap

Start with color #6133 pink. Crochet back and forth.

Ch 252. Follow Tie strap chart 3 and rep sts. Use color #4456 for the second row and use color #3583 cherry for the last row. Fasten off with a tail. Insert this tail into tapestry needle and sew this strap onto left front. Pass this strap to the front, insert it into the opening (0.75") of the right side, pass it around back and tie straps on the left side.

Measurement chart



Stitch key

- ch
- sl st
- + sc
- ┆ hdc
- ┆ dc

↑↑ direction

▲ beginning

◀ end

Chart 1
Pattern A

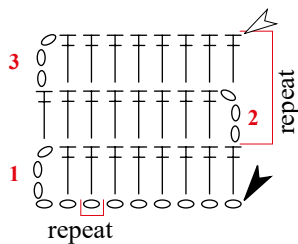


Chart 2
Crochet edge

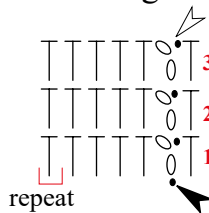
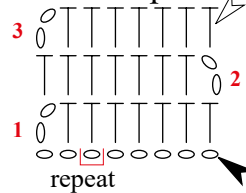


Chart 3
Tie strap





CIRCULO

circuloyarns.com

  [@circulo.usa](https://www.instagram.com/circulo.usa)