

CIRCULO YARNS

# Tricot & Crochet

SUMMER EDITION



Get to  
know 6  
talented  
artisans

and why they love Circulo yarn!

12

exclusive  
designs

created specially for you

Bonus - 3 patterns

**CIRCULO**

[circuloyarns.com](http://circuloyarns.com)

NATURAL COTTON

# MACRAMÉ

FASHION  
& DECOR

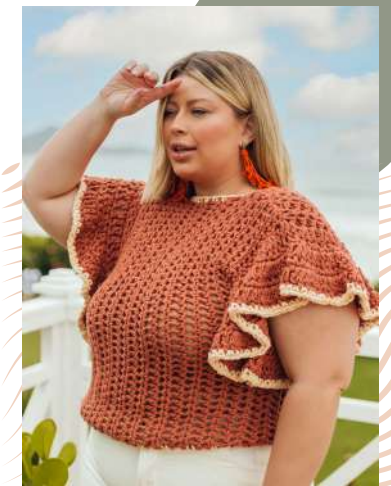
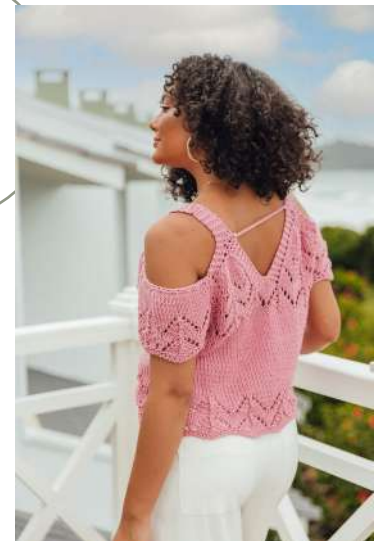
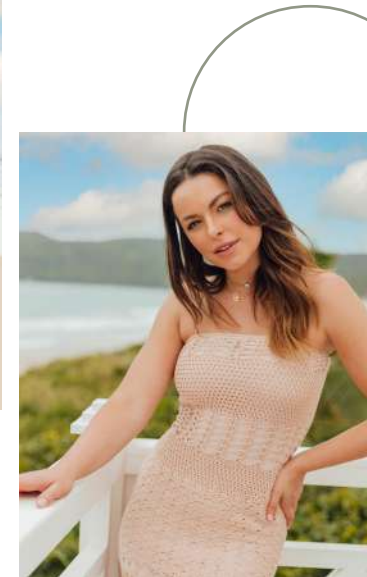


Círculo's first yarn specifically for Macrame.

100% Brazilian Cotton | Super Bulky 4 mm | Natural and Maxcolor

# CÍRCULO

# Editorial



Our first issue of Circulo Tricot & Crochet magazine couldn't be more special! We want to celebrate Summer and the release of our magazine in the United States, which is already successful in Brazil!

In the next pages, you will know a little more about our history, our arrival in the American market and our products. All these through words and work of artisans who already know and trust our yarns in the United States and choose Circulo!

We hope you enjoy the material. Everything has been prepared with much love and affection specially for you!

To learn more about us and all our love for the handmade universe, follow us on social media and visit our website! It will be a pleasure to have you with us!

[www.circuloyarns.com](http://www.circuloyarns.com) /circulo.usa



Get behind the scenes of our first Knitting and Crochet USA edition magazine photoshoot!

## CÍRCULO

LINCE INTERNATIONAL CEO: Fernando Rodrigues  
MARKETING DIRECTOR: Osni de Oliveira Junior  
MARKETING COORDINATOR: Fernanda Wieser  
EXPORT MANAGER: Maryah Borges de Castro  
INTERNATIONAL MARKETING ANALYST: Fernanda Dagnoni Wehmuth  
FASHION MARKETING ANALYST: Luis Eduardo Reinert  
PRODUCT DESIGN ANALYST: Simoni Scottini  
EDITOR: Maria Julia Spengler  
DESIGNER: Joice Junckes  
TRANSLATOR: Adriana Baiocco  
PHOTOGRAPHER: Micheli Carolina Vicenzi  
VIDEO: Gilmar Antunes  
MODELS: Altaiza dos Santos Meurer, Gabriela Zambonato Fiori, Giovana Raupp Barbosa and Carolina Pickler Buss

IMPORTANT NOTICE:  
Circulo Inc who created, produced and implemented this project. Each contributor has originally created the designs and is the sole owner of the designs, responsible for that.

RESPECT THE AUTHORS RIGHT:  
reproduction of total or partial content of this magazine in any platform (digital or physical) is prohibited by law.

## We are Circulo

We were born in 1938, in Gaspar, a small town in Santa Catarina state in Brazil. We are the fruit of Mr. Leopoldo Schmalz's dream of producing yarns and threads for arts and crafts. Today, 83 years later, we are one of the largest textile industries in Brazil.

Our search for innovation in the arts and crafts world is constant, through different colors and textures with tradition and care for the choice of raw materials.

It was through continuous improvement and strict quality control, which starts at the moment raw materials reach the plant to the moment products are shipped. This is how we gained customers and became a respected company in the national market.





## Circulo Yarns around the World

To establish ourselves in the international market we seek excellence while always respecting and valuing the artisan and her/his art. Always adapting to the most different markets to better serve our costumers.

Circulo started exporting in 1982 and today, almost 40 years later, Circulo is on every continent. There are more than 30 countries and 12,000 points of sale in the Americas alone! We work daily to bring our products and our passion for arts and crafts to as many places as possible, always seeking to positively impact each artisan who trusts Circulo to bring her/his creations to life.



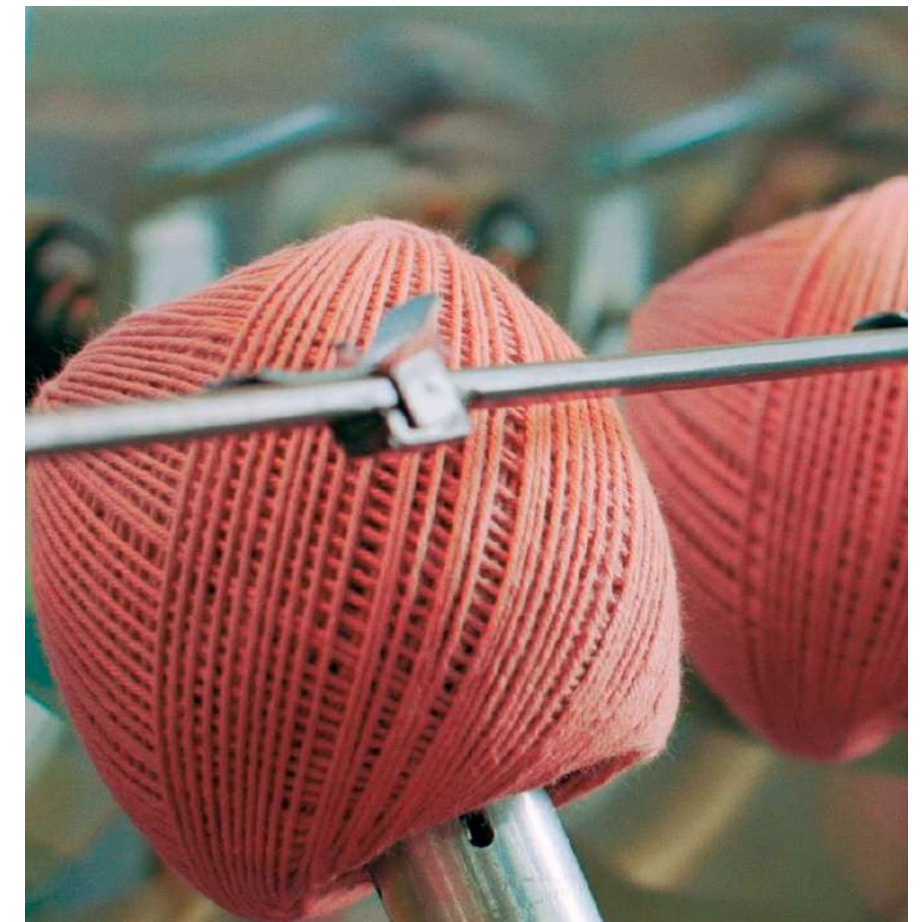
## Products

We are truly passionate about what we do and our products are a reflection of that.

We have more than 150 items in our catalog. There are several options that carry the quality of Brazilian cotton in its composition, resulting in incredible yarns that will bring beautiful pieces to life. Acrylic yarns are also part of our products! They are always connected with the latest trends, bringing innovation in colors and textures to artisans and always with unmatched quality, soft touch and perfect finish!

In addition to yarns used to structure beautiful pieces, we offer digital materials to further stimulate the love for arts and crafts.

The same care placed in the making of yarns, threads and needles can also be seen in our free e-books and publications specializing in fashion and home decoration!



# Artisans

**Our essence is creative and full of love and passion for arts and crafts. It is not only about tradition and quality, but also color, challenges, modernity, and a lot of personality!**

No one is better to talk about Circulo than artisans who know us and choose to give life to their designs every day! Thinking about it, we invited six artisans who mostly live in the United States and are passionate about Circulo's products, to share with us a little of their story within the arts and crafts world.

From different locations in the United States and different backgrounds, arts and crafts entered in their lives in different ways. As a girl or as an adult, handmade arts and crafts conquered the heart of each one of them and invited them to a journey into the wonderful universe of the handmade. They never regretted getting involved with arts and crafts, they chose to stay and join us in this wonderful adventure that is life surrounded by threads, yarns, and needles.

It is a pleasure to share your journey, your talent, dedication, and creativity!



**Adriana Baiocco**  
@adriana beachboard



**Brianna Iaropoli**  
@life.and.yarn



**Heather Cummings**  
@CozyCreativeCrochets



**Julie Likley**  
@HandsofZeal



**Kayla Wood**  
@kaycrochets



**Marie Castro**  
@mariecastrodiy



## Adriana Baiocco

@adriana beachboard - ST. PETERSBURG, FLORIDA

As a child, at the age of 8, Adriana fell in love with the world of manual arts when she found a ball of yarn inside her mother's chest. Always very curious, the little girl soon became enchanted by what she did not know, began to practice, liked, and never stopped.

Today, manual arts are an essential part of Adriana's life! Driven by challenges, what makes her eyes shine is creating new designs and her favorite pieces to make are dresses and jumpsuits.

Besides manual crafts Adriana is also a certified English and Portuguese teacher and plays a key role for *Círculo*, she is responsible for translating patterns developed with such affection by Brazilian artisans into English.

Adriana is Brazilian and she currently lives in St. Petersburg, Florida. For her, it was a great joy to know that *Círculo's* products, which she used to make her first projects, could be found in the United States.

A big fan of crochet and *Charme* yarn, Adriana believes that *Círculo's* products stand out for their quality and once you know *Círculo's* products, it's hard to get used to others!



Summer showers  
Level: Intermediate  
Natural Cotton Multicolor Premium



**Cotton Lace Top**  
Level: Intermediate  
Natural Cotton Maxcolor 4/6





## Brianna Iaropoli

@life.and.yarn - COTTONDALE, FLORIDA

Always attracted to any craft she could do with her own hands; craftsmanship has forever been part of Brianna's life. However, it wasn't until 2016, when the artisan became pregnant with her first child, that crochet came to occupy a special space in her heart. During pregnancy, her greatest desire was to make a blanket for the soon-to-arrive baby.

Before becoming a mother, Brianna was practicing Architecture and had hobbies like sculpture and painting, which require a lot of time and organization. Finding time for these hobbies proved to be difficult and crochet was able to fill that creative void. Now, Brianna feels that she is able to create whenever she wants, soothing and clearing her mind.

Brianna designs with an elegant, modern, and chic style. When designing her patterns, her priority is to design with stitches easy enough for a beginner, but still satisfying for an experienced crocheter.

Passionate about the colors and its power to transform the style of a garment, Brianna is a big fan of the variety of shades offered by *Círculo!* For the artisan, it's amazing to see a piece completely change style just by changing its color.



**Lacy Tunic**  
Level: Intermediate  
Duna



Lacy Bolero  
Level: Easy  
Duna





## Heather Cummings

@CozyCreativeCrochets - LONG ISLAND, NEW YORK

Crochet became part of Heather's life at a very delicate time. The artisan fractured her back in the same period her son was born. Because of that, she had to stay in bed to recover from the injury. And that's when crochet came to stay in her life.

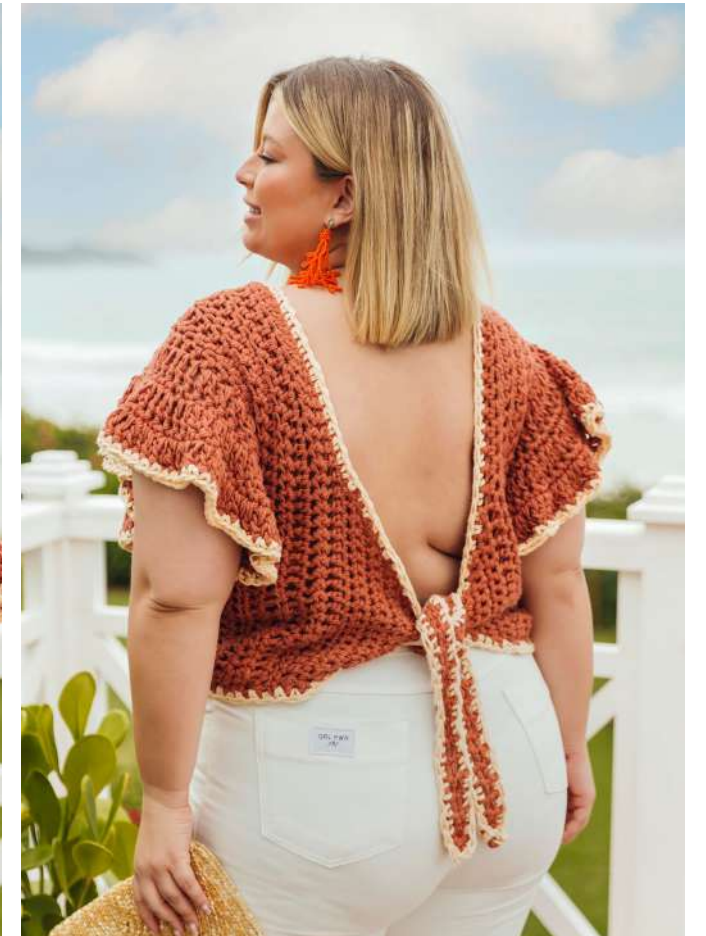
Arts and crafts are important in different ways for Heather. Today, it is her main source of income, and the artisan is officially a small businesswoman, with LLC (Limited Liability Corporation) opening in 2021.

Heather classifies her style as Boho chic and trendy. She relies on the quality of Círculo's products to give life to her creations. Although she hasn't been able to visit Brazil yet, she enjoys working with us and continues using Círculo's products in her pieces.



**Heart on your Sleeve - Sweater**  
Level: Intermediate  
Círculo Natural 4/6

**TRIPLE THREAT TOP**  
Level: Intermediate  
Circolo Natural Cotton 4/6





## Julie Likley

@HandsofZeal - POMPANO BEACH, FLORIDA

It was at the hands of her grandmother that Julie, a Pompano Beach resident, learned how to crochet. Always creative, she was immediately attracted by this technique, which has been part of her life for almost ten years. In 2012, crochet was a creative outlet for the homemaker, who felt immense satisfaction and joy by being able to create something with her own hands.

Creating things is something that has been part of Julie's life since childhood. She enjoys seeing skeins of yarn turning into something entirely new. Crochet is her favorite technique, the artisan classifies her style as unique, colorful and innovative!

Currently, in addition to producing her designs, Julie also serves as Sales Support for Círculo USA. Which is an honor for her because she considers Círculo's products to be top-level in both quality and consistency. Julie puts her soul and heart into projects, and that's how she sees the production of Círculo yarns.



**Círculo Ruffle Dress**  
Level: Intermediate  
Charme



**Dahlia Dress**  
Level: Intermediate  
Anne



## Kayla Wood

@kaykrochets - POOLER, GEORGIA

Crochet started being part of Kayla's life 5 years ago at a very special time. In the last months of her first child's pregnancy, the artisan was looking for an activity that would help her to spend time and cope with waiting.

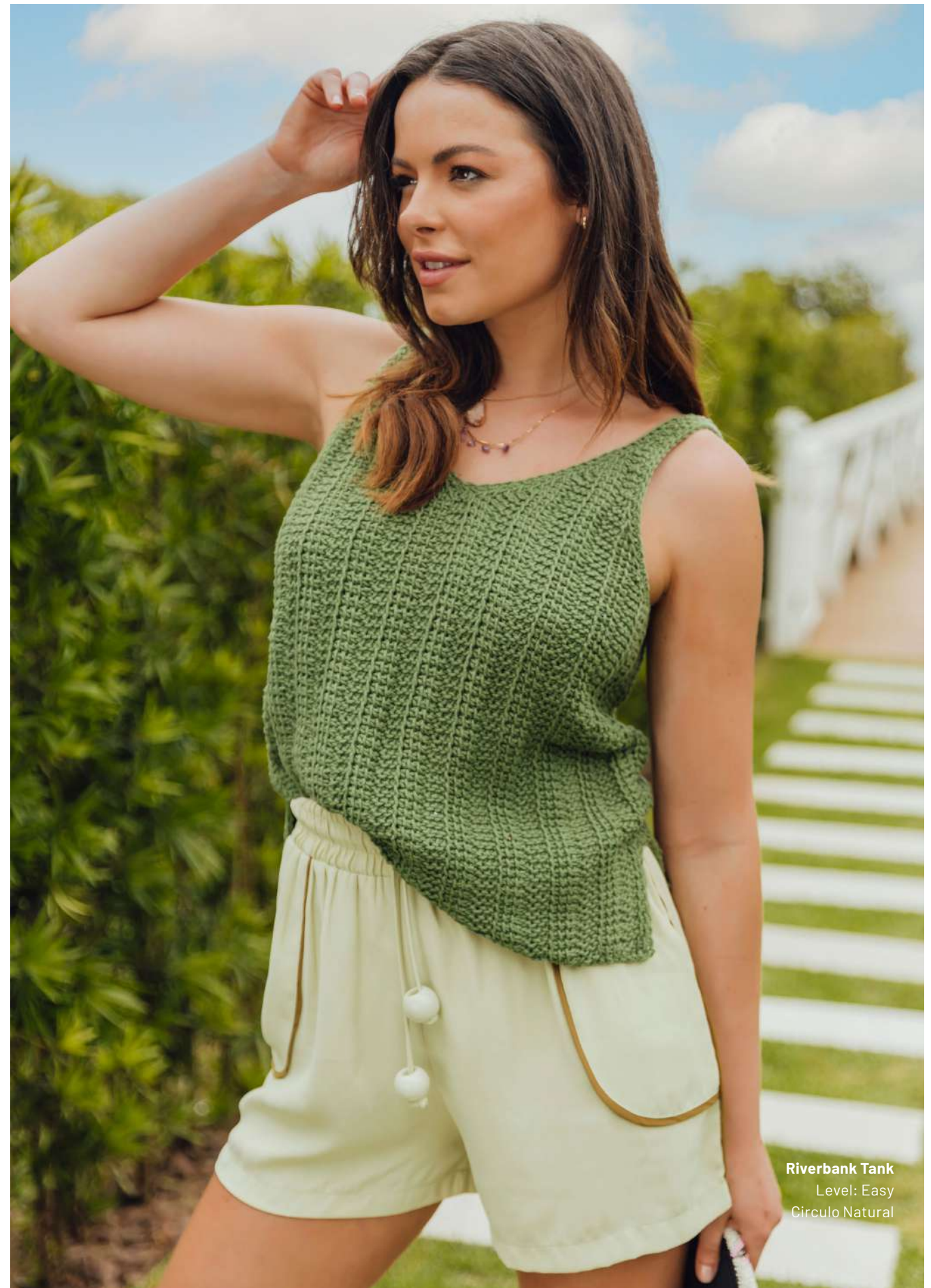
Kayla has many craft lovers in the family, consequently she is an enthusiast of everything that is handmade. For her, each piece is special not only because it is unique, but when you buy something from an artisan, you are directly supporting that person, their creativity, their dreams, and their family.

Kayla defines the style of her pieces as not only unique and timeless but also very comfortable. Another feature that the artisan does not give up and attribute to her creations is quality! As she makes clothes, she considers quality is essential and chooses a yarn that is durable and soft. And for her, that's exactly what Circulos's products are about!





**Road Trip Tank**  
Level: Easy  
Charme



**Riverbank Tank**  
Level: Easy  
Circulo Natural



## Marie Castro

@mariecastrodiy - SÃO PAULO, BRAZIL

The passion for arts and crafts is in Marie's family blood line: her grandmother, her mother, and some aunts. The same passion did not take long to awaken within Marie. At 8 years of age, she already used crochet and knitting as a way of freedom and autonomy to create her own clothes.

Today, Marie states that arts and crafts encompass much of who she is. She feels comfortable mixing colors (something she loves!), textures and feelings. It is a lifestyle that Marie not only leads as a profession, but also applies daily.

It is with great satisfaction and pride that Marie sees her designs being replicated in other countries. For the artisan, passionate about crochet, it amazes her to see her art being spread all over the world among so many people from different places and cultures. This is the proof that arts and crafts are universal and a great way to connect people!

The love relationship between Marie and Circulo is longstanding. It was the quality and differentiated yarns with many colors available that won the heart of this artisan!

Marie sees the presence of Círculo in the United States as a way to encourage American artisans to see cotton yarns with more affection, as a versatile and adaptable material for all styles and seasons. Her favorite yarn is Charme which is 100% cotton.



**Skirt**  
Level: Easy  
Charme



**Long Dress**  
Level: Intermediate  
Charme

# Círculo Yarns exclusive launch of **WHOOPEE**

The perfect combination of colors with the quality of Círculo cotton.





Whoopee is made in Brazil, but it was developed to meet the US market needs to bring a yarn with high quality cotton and a mixture of incredible colors!

With 100% mercerized cotton in its composition, the yarn stands out for its soft touch and unique lightness.

Available in 14 colors to die for!

**Technical Information - Sport**  
528 m / 578 yds | 200 g / 7.05 oz

 2.25 to 3.25 mm  
 3.25 to 4 mm  
 B-1 to D-3      3 to 6 US

# CÍRCULO

www.circuloyarns.com  
@circulo.usa







**Row 5:** 1 edge st, k2tog, k1, yo, k5, yo,\*k1, SK2P, k1, yo, k5, yo\* rep from \* to \*, end with k1, SKP, k1.  
**Row 7:** 1 edge st, k2tog, yo, k7, yo,\*SK2P, yo, k7, yo\* rep from \* to \*, end with yo, SKP, k1.



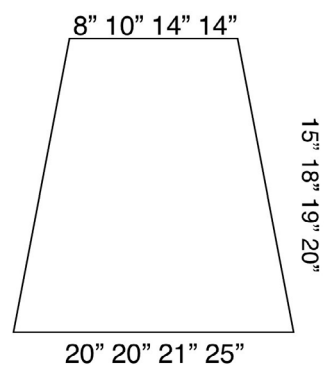
**Finishing:**  
 After finishing the 4 panels, sew them together using the edge sts forming a whole piece (tube). Identify front & back and sew sleeves tog (1 seam from the back & 1 from front) for 2 chevrons (3 chevrons). (see picture below).



**Collar:** use circular needles 10, knit in the round. Pick up 96 sts around neckline: \*pick up 3, sk 1\* = 96 sts/126 sts. Use circular needles to mk 12 (14) rnds in 1x1 Rib and BO all sts and weave in ends. Finished piece.



Measurement Chart in this order: S M L XL



**COTTON LACE TOP | Page 12/13**  
 Created by Adriana Baiocco  
 Size: S/M/L/XL  
 Level: Intermediate

**MATERIAL:** Size S Chest 29"/74 cm/ length 20"/50 cm: 2 balls of Natural Cotton 4/4 (DK)(color of your preference)+ knitting needles 8/5 mm  
 Size M Chest 36"/91.5 cm/length 21"/54 cm: 2 balls of Natural Cotton Maxcolor 4/6 (Light Worsted) color 3390 + Knitting needles US 10/6 mm  
 Size L Chest 42"/107 cm/length 24"/61 cm: 3 balls of Natural Cotton Maxcolor 4/6 (Light Worsted) color 3390 + knitting needles US 10.5/6.5 mm  
 Size XL Chest 49"/124.5 cm/length 28"/71 cm: 4 balls of Natural Cotton Maxcolor 4/6 (Light Worsted) color 3390 +knitting needles US 10.5/6.5 mm

Crochet hook F  
 1 Cable needle  
 Tapestry needle/measuring tape & scissors.

**STITCH GLOSSARY AND ABBREVIATIONS:**

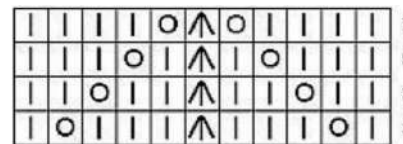
CO: cast on  
 BO: bind off  
 rep: repeat  
 mk: make  
 dec: decreases  
 inc: increases  
 RS: right side  
 WS: wrong side  
 CN: cable needle  
 P: purl  
 K: knit  
 Yo: yarn over  
 SKP: sl 1, k1, pass sl st over.  
 SK2P: slip 1, knit 2 together, pass sl st over the knit 2 together.  
**Edge st:** sl 1st st in the beginning of every row to facilitate sewing sides & sleeves later.

Crochet: single crochet = sc  
**GAUGE:** S 16 S x 20 R = 4"/10 cm in Stockinette st using Natural cotton Maxcolor 4/4 & needles US 8.  
 M 14 S x 20 R = 4"/10 cm in Stockinette st using Natural cotton Maxcolor 4/6 & needles US 10.  
 L/XL 14 S x 18 R = 4"/10 cm in Stockinette st using Natural cotton Maxcolor 4/6 & needles US 10.5.

This top is worked in four parts: Back/Front and sleeves. CO & BO leaving a tail for sewing later. 1 edge st in both sides. For different sizes follow directions with respective amount of yarn and needles described in the material section. **For size S & M follow instructions in black and, L & XL size follow the number of stitches (in red).** Also, the length can be increased to your size by increasing inches on the body section worked in Stockinette st, keeping in mind you will need more yarn to make a longer top. (Pictures are based on a size M but you follow the same instructions according to your size)

**Pattern 2x = 1 chevron (multiples of 10 + 1)**  
**Even rows:** 1 edge st, p the remaining sts.

**Row 1:** 1 edge st, \*yo, k3, SK2P, k3, yo, k1\* rep from \* to \*, end with yo, k1.  
**Row 3:** 1 edge st, k1, \*yo, k2, SK2P, k2, yo, k3\* rep from \* to \*, end with yo, k2.  
**Row 5:** 1 edge st, k2, \*yo, k1, SK2P, k1, yo, k5\* rep from \* to \*, end with yo, k3.  
**Row 7:** 1 edge st, k3, \*yo, SK2P, yo, k7\* rep from \* to \*, end with yo, k4.  
**Row 9:** 1 edge st, \*k3, SK2P, k3, yo, k1, yo\* rep from \* to \*end with k3, SK2P, k4.  
**Row 11:** 1 edge st, \*k2, SK2P, k2, yo, k3, yo\* rep from \* to \*, end with k2, SK2P, k3.  
**Row 13:** 1 edge st, \*k1, SK2P, k1, yo, k5, yo\* rep from \* to \*, end with k1, SK2P, k2.  
**Row 15:** 1 edge st, \*SK2P, yo, k7, yo\* rep from \* to \*, end with SK2P, k1.  
**Row 16:** 1 edge st, p the remaining sts.



**Back & front are worked the same.**  
**CO 71 (81/91).** Leave a long tail for sewing side later.  
**Rows 1 - 3:** in Garter st  
**Row 4:** Follow Pattern rows 1 - 16.  
**Row 16:** 63 sts total (73/83 sts).



**Row 17:** Dec 1st in the beginning and 1 at the end (before & after edge sts)= 61/71/81 sts. From this point on start working in Stockinette st for 8" for size M, for size L 10", and S & XL 12". Note: you can measure your body to see if this is right for your size or desired length. After finishing St st part, follow Pattern again rows 1 - 8.



**Cup division:** Divide work 29 sts(left cup) (35/40 sts)/30 sts (36/41 sts)(right cup). Continue following second session of pattern: rows 9 - 16. Decreases will happen automatically at armholes. **Note:** Choose your size e follow instructions below. (XL just follow instructions adding red part and later follow continuation).  
**Cup division on the RS for S/M and XL sizes:** work as follows: edge st, k3, sk2p, k3, yo, k1, yo, k3, sk2p, k3, yo, k1, yo, (XL k3, sk2p, k3, yo, k1, yo)k3, sk2p, k4 (XL 1 k2tog)= 29 sts (41). Slip the remaining 30 (40) sts to CN.  
**Cup division on the RS size L:** work as follows: edge st, K3, sk2p, k3, yo, k1, yo, k3, sk2p, k3, yo, k1, yo, k3, sk2p, k7, k2tog = 35 sts. Slip the remaining 35 sts to CN.



**Right cup (when working): (XL add instructions in red)**  
 Row 1: turn, start working on the WS, k4, p the remaining sts.  
 Row 2: 1 edge st, k2, sk2p, k2, yo, k3, yo, k2, sk2p, k2, yo, k3, (XL k2, sk2p, k2, yo, k3) yo, k2, skp, k4.  
 Rows 3 - 15: k4, p the remaining sts.  
 Row 4: 1 edge st, k1, sk2p, k1, yo, k5, yo, k1, sk2p, k1, yo, k5, yo, (XL k1, sk2p, k1, yo, k5, yo) k1, skp, k4.  
 Row 6: 1 edge st, sk2p, yo, k7, yo, sk2p, yo, k7, (XL yo, sk2p, yo, k7) yo, skp, k4.  
 Row 8: 1 edge st, k2tog, k3, yo, k1, yo, k3, sk2p, k3, yo, k1, (XL yo, k3, sk2p, k3, yo, k1) yo, k3, skp, k4.  
 Row 10: 1 edge st, k2tog, k2, yo, k3, yo, k2, sk2p, k2, yo, k3, (XL yo, k2, sk2p, k2, yo, k3) yo, k2, skp, k4.  
 Row 12: 1 edge st, k2tog, k1, yo, k5, yo, k1, sk2p, k1, yo, k5, (XL, yo, k1, sk2p, k1, yo, k5) yo, k1, skp, k4.  
 Row 14: 1 edge st, k2tog, yo, k7, yo, sk2p, yo, k7, (XL yo, sk2p, yo, k7) yo, skp, k4.  
 Row 16: k4, k2tog, k4, sk2p, (XL k3, yo, k1, yo, k3, sk2p) k7, skp, k4.  
 Row 17: k4, p14, (XL 24 total) k4. Note: from now on every odd row you are going to mk 2 borders with 4 sts, work as follows: k4, p central sts, k4.

Row 18: k4, k2tog, k2, sk2p, (XL k2, yo, k3, yo, k2, sk2p) k5, skp, k4.  
 Row 19: k4, p10, (XL 20 total) k4. (XL from now on follow instructions below in red)  
 Row 20: k4, k2tog, sk2p, k3, skp, k4.  
 Row 22: k4, sk2p, sk2p, k4.  
 Row 24: k3, sk2p, k4  
 Row 25: k3, sk2p, k2 = 6 sts  
 Mk 10 rows in Garter st and BO. **Size S = 15 rows.** Note: you can mk longer straps according to you size or mk long straps to tie a bow on top.  
**XL Continuation**  
 Row 20: k4, k2tog, sk2p, k1, yo, k5, yo, k1, sk2p, k3, skp, k4.  
 Row 21: k4, p16, k4. Note: from now on every even row you are going to mk 2 borders with 4 sts, work as follows: k4, p central sts, k4.  
 Row 22: sk2p, yo, k7, yo, sk2p, sk2p, k4.  
 Row 24: k4, k2tog, k7, sk2p, k4.  
 Row 26: k4, k2tog, k5, skp, k4.  
 Row 28: k4, k2tog, k3, skp, k4.  
 Row 30: k4, k2tog, k1, skp, k4.  
 Row 32: k4, sk2p, k4.  
 Row 33: k3, sk2p, k3.  
 Mk 16 rows in Garter st = 8 ridges and fasten off. Note: you can mk longer straps according to you size or mk long straps to tie a bow on top.



**Left cup (when working):** start at center, return sts onto needle and join yarn in the center, work on the RS. (XL instructions in red. Note: add to your rows the following instructions but start at the beginning of odd rows and follow the total amount of sts for even rows)  
 Row 1: k4, k2tog, k3, yo, k1, yo, k3, sk2p, k3, yo, k1, yo, k3, (XL sk2p, k3, yo, k1, yo, k3), sk2p, k4  
 Rows 2 - 16 : 1 edge st, p central sts and end with k4 (neckline border).  
 Row 3: k4, k2tog, k2, yo, k3, yo, k2, sk2p, k2, yo, k3, yo, k2 (XL sk2p, k2, yo, k3, yo, k2), sk2p, k3  
 Row 5: k4, k2tog, k1, yo, k5, yo, k1, sk2p, k1, yo, k5, yo, k1 (XL sk2p, k1, yo, k5, yo, k1), sk2p, k2  
 Row 7: k4, k2tog, yo, k7, yo, sk2p, yo, k7, yo, (XL sk2p, yo, k7, yo), sk2p, k1  
 Row 9: k4, k2tog, k3, yo, k1, yo, k3, sk2p, k3, yo, k1, yo, k3, (XL sk2p, k3, yo, k1, yo, k3), skp, k1  
 Row 11: k4, k2tog, k2, yo, k3, yo, k2, sk2p, k2, yo, k3, yo, k2, (XL sk2p, k2, yo, k3, yo, k2), skp, k1  
 Row 13: k4, k2tog, k1, yo, k5, yo, k1, sk2p, k1, yo,

k5, yo, k1, (XL sk2p, k1, yo, k5, yo, k1), skp, k1  
 Row 15: k4, k2tog, yo, k7, yo, sk2p, yo, k7, yo, (XL sk2p, yo, k7, yo), skp, k1  
 For size XL continue following directions below in red.  
 Row 17: k4, k2tog, k7, sk2p, k4, skp, k4  
 Row 18: k4, p14, k4. Note: from now on every even row you are going to mk 2 borders with 4 sts, work as follows: k4, p central sts, k4.  
 Row 19: k4, k2tog, k5, sk2p, k2, skp, k4  
 Row 21: k4, k2tog, k3, sk2p, skp, k4  
 Row 23: k4, sk2p, sk2p, k4.  
 Row 25: k3, sk2p, k4  
 Row 26: k3, sk2p, k2  
 Mk 10 rows in Garter st and BO. **Size S = 15 rows.** Note: you can mk longer straps according to you size or mk long straps to tie a bow on top.  
 Make other part and set pieces aside.  
**XL continuation**  
 Row 17: k4, k2tog, k7, sk2p k2tog, k3, yo, k1, yo, k3, sk2p, k4, skp, k4.  
 Rows 18 -: k4, p24, k4. Note: from now on every even row you are going to mk 2 borders with 4 sts, work as follows: k4, p central sts, k4.  
 Row 19: k4, k2tog, k5, sk2p, k2, yo, k3, yo, k2, sk2p, k2, skp, k4.  
 Row 21: k4, sk2p, k3, sk2p, k1, yo, k5, yo, k1, sk2p, skp, k4.  
 Row 23: k4, sk2p, sk2p, k7, sk2p, k4.  
 Row 25: k4, sk2p, k5, sk2p, k4.  
 Row 27: k4, k2tog, k3, skp, k4.  
 Row 29: k4, k2tog, k1, skp, k4.  
 Row 31: k4, sk2p, k4.  
 Row 33: k3, sk2p, k3 = 7 sts.  
 Mk 16 rows in Garter st = 8 ridges and fasten off. Note: you can mk longer straps according to you size or mk long straps to tie a bow on top.



**Right cup size L:**  
 Row 1: turn, start working on the WS, k5, p the remaining sts.  
 Row 2: 1 edge st, k2, sk2p, k2, yo, k3, yo, k2, sk2p, k2, yo, k3, yo, k2, sk2p, k7.  
 Rows 3 - 17: k5, p the remaining sts.  
 Row 4: 1 edge st, k1, sk2p, k1, yo, k5, yo, k1, sk2p, k1, yo, k5, yo, k1, sk2p, k6.  
 Row 6: 1 edge st, sk2p, yo, k7, yo, sk2p, yo, k7, yo, sk2p, k5.  
 Row 8: 1 edge st, k2tog, k3, yo, k1, yo, k3, sk2p, k3, yo, k1, yo, k2, sk2p, k5.  
 Row 10: 1 edge st, k2tog, k2, yo, k3, yo, k2, sk2p, k2, yo, k3, yo, sk2p, k5.  
 Row 12: 1 edge st, k2tog, k1, yo, k5, yo, k1, sk2p, k1, yo, k5, yo, k1, sk2p, k1, yo,

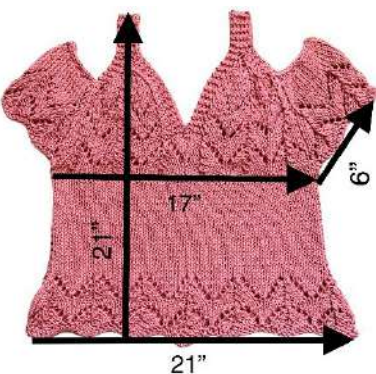
k2, sk2p, k5.  
 Row 16: k4, k2tog, k4, sk2p, k8.  
 Row 17: k5, p8, k5. Note: from now on every odd row you are going to make 2 borders with 4 sts, work as follows: k5, p central sts, k5.  
 Row 18: k5, k2tog, k1, sk2p, k7.  
 Row 20: k5, k1, sk2p, k6.  
 Row 22: k5, sk2p, k5.  
 Row 24: k4, sk2p, k4  
 Row 26: k3, sk2p, k3 = 7 sts  
 Mk 14 rows in Garter st (7 ridges) and B0.  
**Note: you can make longer straps according to you size or mk long straps to tie a bow on top.**



**Finishing:** Use hook F/3.5 mm to make 1 row in sc on the top edge of sleeves: join yarn on side, \*mk 2 sc, sk 1\* = 22 sc. Fasten off and weave in ends.

**Optional:** to prevent strap from sliding, join yarn on back at the beginning of straps, ch 20 (30/40) and join the same place on the other strap. Fasten off.

**Finished piece:** measurements were taken of piece when laid flat. The measurements were taken from the bottom ridges formed by the pattern to the top.



### LACY TUNIC | Page 15

Created by Brianna Iaropoli  
 Size: XS (S, M, L, XL, 2X, 3X, 4X, 5X)  
 Level: Intermediate

#### MATERIALS:

- Size 3.50 mm crochet hook
  - Scissors
  - Circulo Duna DK 990 (1096, 1198, 1412, 1518, 1688, 1860, 2034, 2148) total for solid color
  - Sample made using Circulo Duna in #6001 (Color A) & #7650 (Color B)
  - 650 (698, 744, 852, 898, 1006, 1054, 1162, 1208) Yards Color A,
  - 340 (98, 454, 560, 620, 682, 806, 872, 940) Yards Color B
- GAUGE:** • Ch 29 and follow pattern for Rows 1 to 9  
 • Pattern Swatch should measure 4.5" x 4"



How to sew sleeves: join straps on top, sew sleeves onto body aligning pattern.

#### EASE:

2" positive ease in bust. Sleeves are meant to be slightly cropped so that they are 3/4 when cuffed. Add an extra set of shells for full length.  
 Remember to account for extra yardage when adding length to sleeves or body panels.

#### STITCH DESCRIPTIONS AND ABBREVIATIONS

- Chain Stitch - ch
- Slip Stitch - sl st
- Stitch(es) - st(s)
- Skip - sk
- Stitch Marker - SM
- Single Crochet - sc

#### PATTERN NOTES

- \* Designates a repeat.
- Ch 1 and ch 2 do not count as stitches.
- Do not turn at the end of rounds.
- Sl st to first st of each round, unless otherwise noted.
- "sc 1" means to single crochet in the next stitch.
- "sc 2" means to single crochet in each of the next 2 stitches.
- "2 sc" means to single crochet twice in the next st to create an increase.
- Each Round in the Yoke, unless noted, increases by 6 stitches.

#### FRONT AND BACK PANELS

Ch 77 (89, 101, 113, 125, 137, 149, 161, 173)  
 Row 1 - Sc in 7th chain from hook, \*ch 2, sk 3, 5 dc in next ch, ch 2, sk 3, sc in next ch, ch 5, sk 3, sc in next ch, repeat from \* until 10 chains remain, ch 2, sk 3, 5 dc in next ch, ch 2, sk 3, sc in next ch, ch 2, sk 1, dc in last ch, turn. [6 (7, 8, 9, 10, 11, 12, 13, 14) total 5 dc shells]  
 Row 2 - Ch 1, sc in first dc, sk first ch-2 sp, \*ch 2, sk sc and ch-2 sp, (dc, ch 1) in each next 4 dc, dc in next dc, ch 2, sk ch-2 sp, sc in next ch-5 loop, repeat from \* to end with last sc in turning chain, turn.  
 6 (7, 8, 9, 10, 11, 12, 13, 14) total (dc, ch 1) shells]  
 Row 3 - Ch 3, sk ch-2 sp, \*(dc, ch 2) in each next 4 dc, dc in next dc, sk next 2 ch-2 sps, repeat from \* to last ch-2 sps, (dc, ch 2) in each next 4 dc, dc in next dc, dc in last sc, turn.  
 6 (7, 8, 9, 10, 11, 12, 13, 14) total (dc, ch 2) shells]  
 Row 4 - Ch 5, \*sc in next ch-2 sp, ch 2, sk next ch-2 sp, 5 dc in next dc, ch 2, sk next ch-2 sp, sc in next ch-2 sp, ch 5, repeat from \* until 1 set remains, sc in next ch-2 sp, ch 2, sk next ch-2 sp, 5 dc in next dc, ch 2, sk next ch-2 sp, sc in last ch-2 sp, ch 2, dc in turning chain, turn.

#### ARM PANELS

Ch 77 (77, 77, 89, 89, 101, 101, 113, 113)  
 Row 1 - Sc in 7th chain from hook, \*ch 2, sk 3, 5 dc in next ch, ch 2, sk 3, sc in next ch, ch 5, sk 3, sc in next ch, repeat from \* until 10 chains remain, ch 2, sk 3, 5 dc in next ch, ch 2, sk 3, sc in next ch, ch 2, sk 1, dc in last ch, turn. [6 (6, 6, 7, 7, 8, 8, 9, 9) total 5 dc shells]  
 Row 2 - Ch 1, sc in first dc, sk first ch-2 sp, \*ch 2, sk sc and ch-2 sp, (dc, ch 1) in each next 4 dc, dc in next dc, ch 2, sk ch-2 sp, sc in next ch-5 loop, repeat from \* to end with last sc in

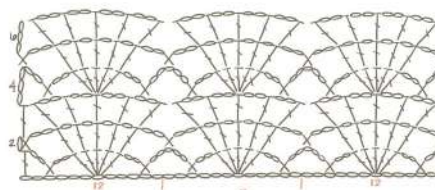
turning chain, turn.  
 [6 (6, 6, 7, 7, 8, 8, 9, 9) total (dc, ch 1) shells]  
 Row 3 - Ch 3, sk ch-2 sp, \*(dc, ch 2) in each next 4 dc, dc in next dc, sk next 2 ch-2 sps, repeat from \* to last ch-2 sps, (dc, ch 2) in each next 4 dc, dc in next dc, dc in last sc, turn.  
 [6 (6, 6, 7, 7, 8, 8, 9, 9) total (dc, ch 2) shells]  
 Row 4 - Ch 5, \*sc in next ch-2 sp, ch 2, sk next ch-2 sp, 5 dc in next dc, ch 2, sk next ch-2 sp, sc in next ch-2 sp, 5 dc in next dc, ch 2, sk next ch-2 sp, 5 dc in next dc, ch 2, sk next ch-2 sp, sc in last ch-2 sp, ch 2, dc in turning chain, turn.  
 Rows 5 to 36 - Repeat Rows 2-4

#### ASSEMBLY

1. Steam block all pieces before assembling. (Optional but HIGHLY recommended)
2. Lay your Front Panel on your Back Panel with Right Sides facing.
3. Seam along Row 1 from the outermost corners in to create the shoulder seam to leave a 10" head opening or adjust to your liking.
4. Repeat Step 2 on other side, neck opening has now been created.
5. Fold each Arm in half with Right Sides facing.
6. Seam from Final Row to Row 1 along Row Ends to create Sleeves.
7. Place end of Sleeve Seam to properly locate armpit on Body Panels, reference chart for measurements.
8. Use a stitch marker to attach each Sleeve at the sides of the Body Panels (arm pit) and a second stitch marker at the half way point of Sleeve (shoulder).
9. Seam from arm pit around sleeve (Row 1) to Body Panels (Row Ends) back to armpit.
10. Continue seam down Body Panels to desired location. Sample leaves last 12 Rows un-seamed for better hip fit.
11. Steam Block a second time (or first) focusing on seams.

	XS	S	M	L	XL
Body Width	13.5"	15.75"	18"	20.25"	22.5"
Body Length	27"	27"	27"	28"	28"
Fits Bust	27"	32"	36"	40"	44"
Arm Hole	6.75"	6.75"	6.75"	7.75"	7.75"
Sleeve Length	16"	16"	16"	16"	16"

	2X	3X	4X	5X
Body Width	24.75"	27"	29.25"	31.5"
Body Length	28"	29"	29"	29"
Fits Bust	50"	54"	58"	62"
Arm Hole	9"	9"	10"	10"
Sleeve Length	16"	16"	16"	16"



Multiples of 12+5



### LACY BOLERO | Page 16/17

Created by Brianna Iaropoli  
 Size: XS-M (M-XL, XL-3XL, 3XL-5XL)  
 Level: Easy

#### MATERIALS:

- Size 4.50 mm crochet hook
- Scissors
- #3 DK Wt. Yarn
- 6 (7, 8, 8) Circulo Duna in #1114
- 1116 (1302, 1395, 1488) yards

**GAUGE:** • Ch 23 and follow pattern for Rows 1 to 6  
 • Pattern Swatch should measure 5" (stitch-wise) x 4" (row-wise)

#### EASE:

Oversized

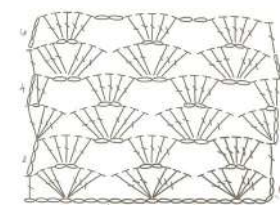
#### STITCH DESCRIPTIONS AND ABBREVIATIONS

- Chain Stitch - ch
- Slip Stitch - sl st
- Stitch(es) - st(s)
- Skip - sk
- Stitch Marker - SM
- Double Crochet - dc

#### PATTERN NOTES

- \* Designates a repeat.
- Ch 1 does not count as a stitch.
- "sc 1" means to single crochet in the next stitch.
- "sc 2" means to single crochet in each of the next 2 stitches.
- "2 sc" means to single crochet twice in the next st to create an increase.
- Ch 3 counts as a dc.
- Ch 4 counts as (dc, ch 1)
- Sizing: pick your best fit based on the size range, you can easily adjust the sizing by adding rows and doing more or less sleeve seaming.
- Arm Span is Sleeve Length plus Back

	XS-M	M-XL	XL-3XL	3XL-5XL
Armspan	56"	60"	63.5"	67"
Fits Bust	28 - 36"	36 - 40"	40 - 54"	54 - 63"
Body Length	27"	27"	29"	29"
Max. Sleeve Seam	19"	20"	18"	17"
Armhole Depth	13.5"	13.5"	14.5"	14.5"



Width. If you feel your size will be too long, go down a size with the starting chain and still specified rows for your size.

#### BODY PANELS

Ch 240 (254, 268, 282)  
 Row 1 - (3 dc, ch 2, 3dc) in 6th chain from hook, \*skip next 6 chains, (3 dc, ch 2, 3dc) in next ch, repeat from \* to last 3-ch, skip 2-ch, dc in last ch, turn. [34 (36, 38, 40) total shells]  
 Row 2 - Ch 3, (5 dc, ch 2) in each ch-2 sp stopping with last ch-2 sp remaining, 5 dc in last ch-2 sp, dc in turning chain, turn. [34 (36, 38, 40) total shells]  
 Row 3 - Ch 4, 3 dc in first dc, (3 dc, ch 2, 3dc) in each ch-2 sp to end, (3 dc, ch 1, dc) in turning ch-3, turn. [34 (36, 38, 40) total shells]  
 Row 4 - Ch 3, 2 dc in first ch-1 sp, ch 2, (5 dc, ch 2) in each ch-2 sp to end, 3 dc in turning chain, turn. [34 (36, 38, 40) total shells]  
 Row 5 - Ch 3, (3 dc, ch 2, 3dc) in each ch-2 sp to end, dc in turning chain, turn. [34 total shells]  
 Rows 6 to 41 (41, 44, 44)  
 Repeat Rows 2-5 ending on a repeat of Row 5 (5, 4, 4)

#### ASSEMBLY

1. Steam block before assembling. (Optional but HIGHLY recommended)
2. Lay your Panel down with Right Sides facing you.
3. Fold in your panel in half with your First Row meeting your Final Row, Right Sides now facing each other.
4. Starting at matching right corners, seam towards the center 19 (20, 18, 17)" along first and final rows, this creates your first sleeve.
5. Starting at matching left corners, seam towards the center 19 (20, 18, 17)" along first and final rows, this creates your second sleeves and completes your body opening.
6. Weave in your ends.
7. Steam Block a second time (or first) focusing on seams.



## HEART ON YOUR SLEEVE - SWEATER | Page 19

Created by Heather Cummings  
 Size: S-2XL but easily adjustable to make any size  
 Level: Intermediate

### MATERIALS:

Circulo Natural Cotton Maxcolor 4/6 WW (approx. 660 yards for a Small)  
 The main color 7207 approx. 600 yards  
 And Approx. 30 yards each of the 2 additional colors 4676 and 1114.  
 For each additional size go up approx. 100-150 yards.  
 5.5mm Hook  
 Measuring Tape  
 Stitch Markers  
 Threading Needle

**GAUGE**- 8DC + 3 Rows = 2"

### ABBREVIATIONS-

CH-Chain  
 ST- Stitch  
 SL ST- Slip Stitch  
 DC- Double Crochet  
 SC- Single Crochet  
 REP- Repeat  
 STS- Stiches  
 BLO- Back Loop Only  
 FPDC- Front Post Double Crochet  
 WS - Wrong side RS-Right Side SC2TOG- Single Crochet Two Together  
 BPDC- Back Post Double Crochet

### INSTRUCTIONS- The body is made up of 3 sections

**SECTION 1 of the Body**- This is based on the size medium



Your starting CH is this the length of your top. Measured from top to bottom.

1st #: Small  
 2nd #: Medium  
 3rd #: Large  
 4th#: X-Large

5th #: 2X-Large  
 CH. (35,39,43,47,51)

**Size:** Small should measure approx. 11"  
 Medium should measure approx. 12"  
 Large should measure approx. 13"  
 X-Large should measure approx. 14"  
 2XL should measure approx. 15"

Row 1: DC in the 3rd CH from the hook. DC in each CH. Turn. (33,37,41,45,49) DC  
 Row 2: CH 2 (Doesn't count as a ST) DC in each DC. Turn. (33,37,41,45,49) DC  
 Row 3-(6,7,8,9,10): REP Row 2

Now take your tape measure and measure across \*Use these measurements as a guide\*

### The width for a size:

Small is 3 1/2"  
 Medium is 4 1/2"  
 Large is 5 1/2"  
 X-Large is 6 1/2"  
 2XLarge is 7 1/2"  
 Row (7,8,9,10,11): CH 2. DC in the next (3,7,11,15,19) DC, CH 32. Turn. (3,7,11,15,19) DC  
 \*This is creating the opening for the sleeve\*

### SECTION 2 of the Body

Row (8,9,10,11,12): DC in 3rd CH from the hook and in each CH and DC. Turn. (33,37,41,45,49) DC  
 Row (9,10,11,12,13): CH 2. DC in each DC. Turn. (33,37,41,45,49) DC  
 Row (10,11,12,13,14)-(26,29,32,35,38): REP Row 2  
 The width of **SECTION 2** \*Use these measurements as a guide\*  
 Small is 14"  
 Medium is 16"  
 Large is 18"  
 X-Large is 20"  
 2XLarge is 22"  
 Row (27,30,33,36,39): CH 2. DC in the next (3,7,11,15,19) DC, CH 32. Turn. (3,7,11,15,19) DC  
 \*This is creating the other opening for the sleeve. Make sure it's on the same side as your other sleeve\*

### SECTION 3 of the Body

Row (28,31,34,37,40): DC in 3rd CH from the hook and in each CH and DC. Turn. (33,37,41,45,49) DC  
 Row (29,32,35,38,41): CH 2. DC in each DC. Turn. (33,37,41,45,49) DC  
 Row (30,33,36,39,42)-(33,37,41,45,49): REP Row 2

### SECTIONS 1 and 3 SHOULD HAVE THE SAME AMOUNT OF ROWS

Fasten Off

### CLOSING UP THE TOP OF YOUR TOP

Now fold the sides in making sure the side openings are on the Top. WIP the opening together at the Top making sure it's evenly lined up. Attaching sections 1 and 3 to section 2. Once that you've created two holes. This is where your sleeves will go. \*Turn your work right side out so the seam is on the inside.



### BOTTOM OF YOUR SWEATER

SL ST both sides together \*See arrow above on where to SL ST the 2 sides together\*  
 Round 1: CH 2, Work 2DC in each side of your each DC around. \*See picture below\*. The ending stitch count doesn't matter here. Instead of joining with a SL ST work a DC in the CH 1 of your beginning CH 2 and mark it with a stitch marker. You will continue to mark the beginning of each round with a stitch marker. Just make sure your ending number is a multiple of 3.



Round 2-9: DC in each DC around. Turn.  
 \*\*Add more rows for a longer length\*\*

### PICOTS

Round 10: \*CH 4, SL ST into the 1st CH, SC in the next 3 DC. Repeat from \* around. Ending on 2 SC and SL ST to join.  
 Fasten off



### COLLAR

Row 1: CH 2 counts as your turning CH. DC around the collar. You don't SL ST to Join. Stop once you reach the other end. \*\*See pictures below on where to attach\*\*. The number of stitches you end with doesn't matter just make sure to end on an even number. Turn.



Row 2: CH 2. \*FPDC, BPDC. REP from \* til the end of the row. DC in the CH from previous row. Turn.



Fasten off and change color  
 Row 3: CH 2. \*BPDC, FPDC. Til the end of the row. DC in the last CH SP. Turn.  
 Fasten off and change color  
 Row 4: Rep Row 2



Fasten off and change to MC  
 Row 5: CH 1, SC in each DC. DO NOT FASTEN OFF. Now you will SC in each side ST til you get to the other SC. See picture below.



Turn your work so you are facing the back and SL ST to the other SC on opposite side where the black arrow is and SL ST again to the middle ST where the red arrow is. \*\*See pictures below\*\*. Fasten off.



### SLEEVES

Using MC yarn attach to the Side DC at the armpit



Round 1: CH 2 counts as a ST. 2DC in same ST, CH 1, Skip 3 STS \*Work 3 DC in next ST, CH 1, Skip 3 STS. REP from \* around. Join with a SL ST to beginning CH 2. (16) 3DC Clusters.  
 Round 2: CH 1. SL ST through the next 2 DC them again in the CH 1 SP and CH 2. CH 2 counts as your 1st DC, work 2DC in that same CH SP, CH 1. \*Work 3 DC in the next CH 1 SP, CH 1. REP from \* around. Join with a SL ST to beginning CH 2. (16) 3DC Clusters



Round 3-8: REP Round 2  
 Fasten off and change color  
 Attach yarn to the CH 1SP after your SL ST.  
 Round 9: CH 2 Counts as a DC, work 2 DC in the same CH SP, CH 1. \*Work 3 DC in the next CH 1 SP, CH 1. REP from \* around. Join with a SL ST to beginning CH 2. (16) 3DC Clusters  
 Round 10: REP Round 2  
 Fasten off and change color  
 Attach yarn to the CH 1SP after your SL ST  
 Round 11: Rep Round 9  
 Round 12: REP Round 2  
 Fasten off and change to MC  
 Attach yarn to the CH 1SP after your SL ST  
 Round 13: REP Round 9  
 Round 14-24: REP Round 2  
 Round 25: CH 1, SC2TOG thru all DC's and CH SP's. Join with a SL ST. (32) SC  
 Round 26: CH 1, \*SC2TOG. REP from \* around. Join with a SL ST. (16) SC

### RIBBED CUFF

CH 15  
 SC in the 2nd CH from the hook. 14 SC, \*SL ST in the next 2 SC that was made in Round 26, TURN, Skip those 2 SL ST, BLO SC in the next 14 SC, TURN, CH 1, BLO SC in the next 14 SC. REP from \*til you reach your starting CH. Join wrist band together. Fasten off  
 Repeat same process for the other sleeve.  
 Fasten off and weave in all ends.



## TRIPLE THREAT TOP | Page 20/21

Created by Heather Cummings

Size: S-2XL but easily adjustable to make larger sizes

Level: Intermediate

### MATERIALS:

Circulo Natural Cotton Maxcolor 4/6 WW colors 7259 & 1114.

For size Small: Approx. 620 yards of the main color and Approx. 140 for the border using two strands held together for the entire top. For each additional size up I would increase approx. 200 yards of the main color and 100 for the border

11.5mm Hook  
12mm Hook  
Threading Needle  
Scissors  
Measuring Tape  
Stitch Markers

**GAUGE**-6 HDC + 6 Rows= 4" Using a 11.5mm Hook

### ABBREVIATIONS

CH-Chain  
ST- Stitch  
SL ST- Slip Stitch  
DC- Double Crochet  
HDC- Half Double Crochet SC- Single Crochet  
REP- Repeat ST- Stitch STS- Stiches  
WS- Wrong side RS-Right Side

**INSTRUCTIONS**- The Body- Using your 11.5 Hook and 2 strands of yarn held together. I made the size small in this pattern  
1st Number: Small  
2nd Number: Medium  
3rd Number: Large  
4th Number: X-Large  
5th Number: 2XL

CH(26,30,34,38,42)

Row 1: HDC in the 2nd CH from the hook. HDC in each CH. Turn. (25,29,33,37,41) HDC  
Row 2: CH 1. (CH 1 doesn't count as a ST). HDC in each HDC. Turn. (25,29,33,37,41) HDC  
Row 3-(6,7,8,9,10): REP Row 2  
Row (7,8,9,10,11): CH 1. (CH 1 doesn't count as a ST). HDC in each of the next (15,17,19,21,23) HDC, then CH (11,13,15,17,19). Turn \*This is creating the opening for the sleeve\*  
Row (8,9,10,11,12): HDC in the 2nd CH from the hook . HDC in each ST. Turn. (25,29,33,37,41) HDC  
Row (9,10,11,12,13)-(24,27,30,33,36): REP row 2  
Row (25,28,31,34,37): REP Row (7,8,9,10,11)  
Row (26,29,32,35,38): REP Row (8,9,10,11,12)  
Row (27,30,33,36,39)-(31,35,39,43,47): REP

Row 2  
Fasten Off



### CLOSING UP YOUR SHOULDERS

Now fold the sides in making sure the side openings are on top. WIP the opening together at the top making sure it's evenly lined up. Once that you've created two holes. This is where your sleeves will go. \*Turn your work right side out so the seam is on the inside.



**CREATING YOUR SLEEVES** - RS Facing up- Using your 12mm Hook- Two strands of yarn held together.

Attach yarn to one of the openings where the armpit would be

**The stitch count doesn't matter for the sleeve I will just give you the basic instructions on how to make it flair. The stitch count I have is for the size small.**

Round 1: CH 2, DC in the same ST. \*2DC in next ST, DC in next ST. REP from \* around. Join with a SL ST. (34) DC  
Round 2: CH 1. SC in each DC around. Join with a SL ST. (34) SC

Round 3-5: REP Rounds 1 and 2. Ending on a DC round  
I ended round 3 with (51) DC  
Round 4 (51) SC  
Round 5 (76) DC. Fasten off



**THE TIE**- Using your 11.5mm Hook attach yarn to the bottom corner opening. Two strands of yarn held together.

### LEFT SIDE OF THE TIE

Row 1: CH 1 (Doesn't count as a ST) SC in that same ST and in each of the next (14,16,18,20,22) STS. Turn. (15,17,19,21,23) SC  
Row 2: DO NOT CH here and throughout. Skip your 1st SC, SC in each of the next (13,15,17,19,21) SC. Turn. (13,15,17,19,21) SC. You are skipping the last SC as well so each row is decreasing by 2SC.

Row 3: Skip 1st SC, SC in each of the next (11,13,15,17,19) SC. Turn. (11,13,15,17,19) SC  
Row 4: Skip 1st SC, SC in each of the next (9,11,13,15,17) SC. Turn. (9,11,13,15,17) SC  
Row 5: Skip 1st SC, SC in each of the next (7,9,11,13,15) SC. Turn. (7,9,11,13,15) SC  
Row 6: Skip 1st SC, SC in each of the next (5,7,9,11,13) SC. Turn. (5,7,9,11,13) SC  
Row 7: Skip 1st SC, SC in each of the next (3,5,7,9,11) SC. Turn. (3,5,7,9,11) SC  
And just continue til you are left with 3 SC. Now you will start each row with a CH 1 CH 1, SC in each SC. Turn. (3) SC and continue this step until you have 18 rows of 3 SC or if you want a longer tie just add a few more rows.

Decrease by not chaining 1 and skipping your 1st SC. Turn. (2) SC  
Last row skip your 1ST SC and SC in next SC. (1) SC  
Fasten off.

### RIGHT SIDE OF THE TIE

Rep the same steps as the left side but starting at the (15,17,19,21,23) ST. Working top down instead.



**THE BORDER** - Attach yarn to the bottom on the side. Using your 11.5mm hook and holding 2 strands of your other color yarn held together.

CH 1, SC around your whole entire top to create a colored border. Join with a SL ST. Fasten off.

Then attach the same yarn to the edge of the sleeve and SC around joining with a SL ST. Fasten off and rep on other sleeve. Fasten off.

Weave in all ends.

There are 3 ways you can wear this top! This Way, Backwards and upside down!!



## CIRCULO RUFFLE DRESS

Created by Julie Likley

Ruffle Attachment: Make 3

Size: S-2XL but easily adjustable to make

Size XS: hips 34" - ch 161

Size S: hips 36" - ch 168

Size M: hips 38" - ch 175

Size L: hips 40" - ch 182

Size XL: hips 42" - ch 189

Size 2XL: hips 44" - ch 196

Size 3XL: hips 46" - ch 203

Size 4XL: hips 48" - ch 210

Size 5XL: hips 50" - ch 217

Size 6XL: hips 52" - ch 224

Level: Intermediate

### MATERIALS:

2 balls each of Circulo Charme Color 1289, 4456, and 6156  
E/3.5 mm crochet hook  
Scissors  
Yarn Needle  
Stitch Markers

### SPECIAL ABBREVIATIONS

CH-Chain

Dc2tog = work 1 dc into the next 2 sts indicated until 1 loop of each remains on the hook, yarn over and draw through all 3 loops on the hook.

Dc3tog = work 1 dc into next 3 sts indicated until 1 loop of each remains on the hook, yarn over and draw through all 4 loops on the hook.

Row 1: 1 hdc in the 3rd ch from the hook and in each st across. Turn.

Row 2: Ch 1, 1 sc in each st across, ending the last sc in the top of the turning ch. Turn.

Row 3: Ch 2 (counts as 1 hdc), sk the first st, 1 hdc in each st across. Turn.

Row 4: Ch 1, 1 sc in each st across, ending the last sc in the top of the turning ch. Turn.

Row 5: Ch 2 (counts as 1 hdc), sk the first st, 1 hdc in each st across. Turn.

Row 6: Ch 1, 1 sc in each st across, ending the last sc in the top of the turning ch. Turn.

Row 7: Ch 2 (counts as 1 hdc), sk the first st, 1 hdc in each st across. Turn.

Row 8: Ch 1, 1 sc in each st across, ending the last sc in the top of the turning ch. Turn.

Row 9: Ch 2 (counts as 1 hdc), sk the first st, 1 hdc in each st across. Turn.

Row 10: Ch 1, 1 sc in each st across, ending the last sc in the top of the turning ch. Turn.

Row 11: Ch 2 (counts as 1 hdc), sk the first st, 1 hdc in each st across. Turn.

Row 12: Ch 1, 1 sc in each st across, ending the last sc in the top of the turning ch. Turn.

Row 13: Ch 3, sk the 1st sc, 1 dc into the next sc, \*ch 3, sk 1 sc, dc3tog into the next 3 sts; rep

from \* to last 3 sts, skip 1 st, dc2tog into the next 2 sts, turn.

Row 14: Ch 1, 1 sc into the 1st st, ch 7, \*1sc into the next dc3tog, ch 7; rep to last dc, 1 sc into the top of the turning ch. Turn.

Row 15: Ch 3, (2 dc, ch 3, 3 dc) into the next ch 7 sp, \*ch 2, 1 sc into the next ch 7 sp, ch 2, (3

dc, ch 3, 3 dc) into the next ch 7 sp; rep from \* to the end, turn.

Row 16: Ch 1, \*1 sc into each of the next 3 dc, 5 sc into the next ch 3 sp, 1 sc into each of the

next 3 dc\*\*, 2 sc into the next ch 2 sp, sk the next sc, 2 sc into the next ch 2 sp; rep from \*

ending last rep at \*\* with last sc in top of tch, turn.

Row 17: Ch 4, 1 tr into each of the next 2 sc, \*2 tr into each of the next 5 sc,\*\*, 1 tr into each of

the next 10 sc; rep from \* ending last rep at \*\*, 1 tr into each of the last 3 sts, turn.

Row 18: Ch 4, 1 tr into each of the next 2 tr, \*2 tr into each of the next 10 tr\*\*, 1 tr into each of

the next 10 tr; rep from \* ending last rep at \*\*, 1 tr into each of the next 2 tr, 1 tr in the top of the

turning ch, turn. Fasten off.

Now fold piece in half and whip stitch the ends together to make a ring. Once you have all three

ruffle pieces done, attach them together with stitch markers by placing them one on top of the

other. The top of one ruffle piece will be placed just above and behind the dc3tog row, which is

Row 13. Repeat with the other piece.

Now you are going to work your way up from the top of the ruffle piece to form the rest of the

dress into the neck straps. This part will be worked in the round.

Attach yarn at the back of the seam of the dress and ch 2.

Round 1: 1 hdc in each st around. Join with a sl st to the top of the first hdc.

Round 2-10: Ch 2, 1 hdc in the first st and in each st around. Join with a sl st to the first hdc.

Round 11: Ch 2, hdc dec in first two stitches. \*1 hdc in the next 10. Hdc dec in the next two

stitches\*, repeat around, hdc in the remaining stitches. Join with a sl st to the first hdc.

Round 12: Ch 2, hdc dec in first two

stitches. \*1 hdc in the next 10. Hdc dec in the next two

stitches\*, repeat around, hdc in the remaining stitches. Join with a sl st to the first hdc.

Round 13-14: Ch 2, 1 hdc in the first st and in each st around. Join with a sl st to the first hdc.

Round 15: Ch 2, hdc dec in first two stitches. \*1 hdc in the next 10. Hdc dec in the next two

stitches\*, repeat around, hdc in the remaining stitches. Join with a sl st to the first hdc.

Round 16: Ch 2, 1 hdc in the first st and in each st around. Join with a sl st to the first hdc.

Row 17-27: Ch 2, 1 hdc in the first st, hdc dec in the next two stitches, hdc in each stitch around

to the last three stitches, hdc dec over the next two, hdc in the last st. Ch 2, turn.

Row 28: Ch 2, 1 hdc in the first st, hdc dec, \*hdc in the next 10, hdc dec\*, repeat around to the

last 3 stitches, hdc dec, hdc in the last st. Ch 2, turn.

Row 29-44: Ch 2, 1 hdc in the first st, hdc dec in the next two stitches, hdc in each stitch around

to the last three stitches, hdc dec over the next two, hdc in the last st. Ch 2, turn.

Now start the triangles

Row 1: Ch 2, turn, 1 hdc in the first st, hdc dec in the next two sts, hdc in the next 22

(24, 26, 28, 31, 33, 35, 38, 40, 42), hdc dec over the next two sts, 1 hdc in the next stitch, ch 2,

turn.

Row 2: Ch 2, 1 hdc in the first st, hdc dec in the next two, hdc across to the last three

stitches, hdc dec in the next two, 1 hdc in the last stitch.

Repeat Row 2 until you have 2 to 4 stitches left (depending on how wide you want your

neck strap to be), then do consecutive rows of hdc until you reach desired length.

Attach yarn in the next stitch in the center of the piece to start the next triangle. It will be right

next to the first row of the other triangle.

Row 1: Ch 2, 1 hdc in the first st, hdc dec in the next two sts, hdc in the next 22 (24,

26, 28, 31, 33, 35, 38, 40, 42), hdc dec over the next two sts, 1 hdc in the next stitch, ch 2,

turn.

Row 2: Ch 2, 1 hdc in the first st, hdc dec in the next two, hdc across to the last three

stitches, hdc dec in the next two, 1 hdc in the last stitch.

Repeat Row 2 until you have 2 to 4 stitches left (depending on how wide you want your

neck strap to be), then do consecutive rows of hdc until you reach desired length. Cut

yarn and weave in ends.



## DAHLIA DRESS | Page 24/25

created by Julie Likley

Size: Small/Medium, Large/Extra Large  
Level: Intermediate

The Dahlia Dress Crochet Pattern is made up of 29 octagon motifs and 25 square motifs joined together. There is a tie back which makes this dress adjustable. Due to the nature of the dress, the stretch of the yarn, and the adjustability of the design, this dress is made in two sizes: Small/Medium and then Large/Extra Large. There are clear instructions for both sizes. Please note the length of the finished garment. You may omit rows to make a shorter dress.

### MATERIALS:

Yarn: Fingering/Super Fine Weight  
1 ball (547 yds) of Circulo Anne Color 8001 (White) - called Color A in the pattern  
2 balls (1,094 yds) of Circulo Anne Color 2137 (Light Blue) - called Color B in the pattern  
1 balls (547 yds) of Circulo Anne Color 6116 (Magenta) - called Color C in the pattern  
2 balls (1,094 yds) of Circulo Anne Color 2856 (Navy Blue) - called Color D in the pattern  
E 3.5 mm crochet hook  
Scissors  
Yarn needle  
Measuring tape  
Stitch markers

### MEASUREMENTS

From the top of the strap to the bottom of the dress it measures 58"/59" long laying flat  
Each square motif should measure 3 1/4" across for size Sm/M and 3 3/4" across for size L/XL  
Each octagon motif should measure 8" across for size Sm/M and 8.5" across for size L/XL

### FLOWER OCTAGON MOTIF INSTRUCTIONS - MAKE 29

For size Sm/M and L/XL - follow instructions for Round 1-8

For size L/XL - complete through Round 9  
Round 1: With Color A. Ch 5, sl st into the 5th ch from the hook to form a ring. Ch 5, 1 dc into the ring. [Ch 2, 1 dc into ring] 6 times. Ch 2, sl st into 3rd ch of ch 5. 78(8 spaces)  
Cut yarn. Attach Color B in any ch 2 sp.

Round 2: Ch 4, 3 tr into the same sp, [ch 2, 4

tr into the next sp] 7 times. Ch 2, sl st into the top of the ch 4. Cut yarn. Attach Color C in the same st as the sl st. Ch 1.

Round 3: Sl st into the sp between the ch 4 and first tr, ch 4, 1 tr into the same sp. 2 tr into each of the next 2 spaces between the tr stitches. [Ch 2, sk ch 2 sp, 2 tr into each of the next 3 spaces between the tr stitches] 7 times. Ch 2, sl st into the 4th ch of the ch 4.

Round 4: Sl st into the sp between the ch 4 and the first tr. Ch 4. Tr5Tog into the next 4 spaces between the tr of the previous round as follows: 1 st into the next sp, 2 sts into the next, 1 st into the next, 1 st into the next (6 loops on the hook), yarn over, pull through all loops. Ch 6, sl st into next ch 2 sp. \*Ch 6, Tr6Tog into the spaces between the next set of tr as follow: 1 st into the first sp between first 2 tr, 1 st into the next sp, 2 sts into the next sp, 1 st into the next, 1 st into the next (7 loops on the hook), yarn over, pull through all loops. Ch 6, ss into the next ch 2 sp.\* Repeat from \* to \* 6 more times. Ch 6, sk ch 4 at the start of the round, ss into the top of the first tr. Cut yarn and join Color A into the 3rd ch of the next ch 6 loop, ch 1, then continue to round 5.

Round 5: Sc into the ch 6 sp just below your sl st, \*ch 4, sc into the next ch 6 sp, ch 6, sc into the next ch 6 sp\*, repeat from \* to \* 7 times, omitting the last sc after your final ch 6, and finishing with a sl st into the first sc at the start of the round.

Round 6: Sl st into the first ch 4 sp, ch 3, 5 dc into the same sp, 9 tr into the next ch 6 sp, (6 dc into the next sp, 9 tr into the next sp) 7 times around. Join with a sl st into the top of ch 3. Cut yarn and join Color D into the same st as the sl st.

Round 7: Ch 1, sc into the sl st, \*ch 4, sk the next 4 stitches, sc into the next st (last dc of your 6 dc below), ch 4, sk the next 4 stitches, 3 dc in the next st (center of your 9 tr below), ch 4, sk the next 4 stitches, sc in the next st (first dc of the 6 dc below)\*, repeat from \* to \* 7 times, omitting the last sc and finishing with a sl st into your first sc.

Round 8: Ch 1, \*5 sc into first ch 4 sp, 6 sc into the next sp, 1 sc into the first dc, 3 hdc into the next dc, 1 sc into the next dc, 6 sc in the next ch 4 sp\*, repeat to the end. Join with a sl st to the first sc.

Size Sm/M - Finish off.

For size L/XL only:

Round 9: Ch 2, \*1 hdc in the next 3 sts, sk 1, 1 hdc in the next 7 sts, sk 1, (hdc, ch 1, hdc) in the next st, sk 1, 1 hdc in the next 7 sts, sk 1\*, repeat to the end. Join with a sl st to the first hdc.  
Finish off.

### SQUARE MOTIF INSTRUCTIONS - MAKE 25

For size Sm/M and L/XL - follow instructions for Round 1-4

For size L/XL - complete through Round 5  
Round 1: With Color B. Start with a magic ring and ch 3. 1 dc in the ring. \*Ch 1, 2 dc, ch 3, 2 dc\*, repeat from \* to \* two more times. Ch 1, 2dc, ch 3, join with a sl st to the top of the ch 3. Pull tightly to close the magic circle.

Round 2: Sl st into the next dc and into the ch 1 sp, ch 5, 1 dc in the same sp, \*[3 dc, ch 3, 3 dc] in the ch 3 sp (corner). [1 dc, ch 2, 1 dc] in the ch 1 sp\*, repeat from \* to \* 2 more times. [3 dc, ch 3, 3 dc] in the next ch 3 sp. Join with a sl st to the 3rd ch of the beginning ch 5.

Round 3: Ch 3, 4 dc in the same sp, \*[4 dc, ch 3, 4 dc] in the ch 3 sp, 5 dc in the ch 2 sp\*, repeat from \* to \* 2 more times. [4 dc, ch 3, 4 dc] in the next ch 3 sp. Join with a sl st to the top of the ch 3. Cut yarn and join Color D in the same sp as sl st.

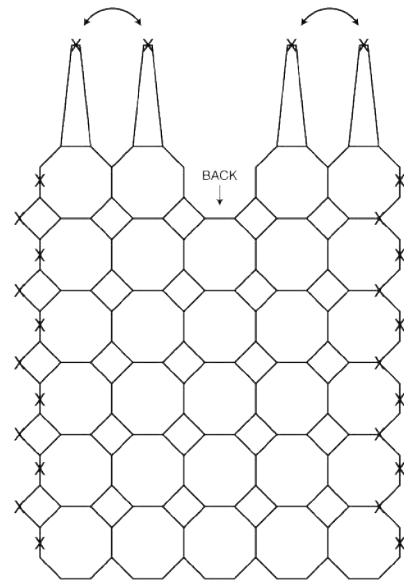
Round 4: Ch 1, 1 sc in the next 8 dc, \*3 sc in the corner sp, 1 sc in the next 13 dc\*, repeat from \* to \* 2 more times. 3 sc in corner sp, 1 sc in the last 4 dc. Join with a sl st to the 1st sc.

For size L/XL only:

Round 5: Repeat Row 4. Finish off.

### ASSEMBLY

With Color D. Assemble the octagons and squares following the diagram below. I suggest using stitch markers to hold the motifs in place as you whip stitch them together. Then start on the straps and border.



### STRAPS

Attach Color D in the center hdc on the corner of the octagon. Ch 2, 1 hdc in the same st as joining and in the next 21 stitches. Ch 2, turn 1 hdc in the first st, hdc dec, hdc in the next 16, hdc dec, hdc in the last st  
Keep decreasing every row until you have a total of 6 sts  
Do 10 rows of 6 hdc and attach the tops of the straps together.

\*\*I suggest slipping on the dress to see if you need to shorten or lengthen the straps before you start on the border. Keep in mind they will stretch a bit.

Repeat on each octagon, the two on the front and the two on the back.



## ROAD TRIP TANK | Page 28

created by Kayla Wood

Level: Easy

### MATERIALS:

HOOKS: 3 mm & 4 mm crochet hook (or hook needed to obtain gauge)

YARN: Approx. 455(590, 665, 810, 965)(1160, 1350, 1445, 1545) yards of Charme by Circulo Yarn color 7684

NOTIONS: stitch markers, tape measure, threading needle, scissors

### ABBREVIATIONS:

- ch(s) - chain(s)
- blsc - back loop single crochet
- dc - double crochet
- f/o - finish off
- fsc - foundation single crochet
- LPS - lemon peel stitch (See page 3.)
- RS - right side of work
- sc - single crochet
- slst - slip stitch
- st(s) - stitch(es)
- WS - wrong side of work
- X - times
- y/o - yarn over

### NOTES:

- Sizes are color coded and in the following order:

**XS (S, M, L, XL) (2X, 3X, 4X, 5X)**

- Garment is worked from the bottom-up in 2 separate panels.

- Recommended **negative** ease: 1 inch

- Finish off: ch 1, cut yarn, pull tail through loop to knot

- If instructions state to repeat \*\* or (), simply repeat the instructions located inside of those symbols.

- dc3tog: \*y/o, place hook into next st, y/o, pull up a loop, y/o, pull through 2 loops\*, repeat \*\* 2 more x (4 loops on hook), y/o, pull through all loops on hook

**GAUGE:** 17 sts x 12 rows = 4 inches (with 4mm hook)

Ch 18

ROW 1: sc in 2nd ch from hook, \*dc in next ch, sc in next ch\*, repeat \*\* across, turn - 17 sts

ROW 2: ch 1 (never counts as st), \*dc in next st, sc in next st\*, repeat \*\* across, turn - 17 sts

ROW 3: ch 1, \*sc in next st, dc in next st\*, repeat across, turn - 17 sts

ROWS 4-12: Repeat ROWS 2 & 3.

### SPECIAL STICHES:

**Lemon Peel Stitch (LPS):** (Also known as the Griddle Stitch) In this pattern, this stitch is a 2 st, 2 row repeat. You will always place a dc over a sc and vice versa. (See example ROWS and st chart below.)

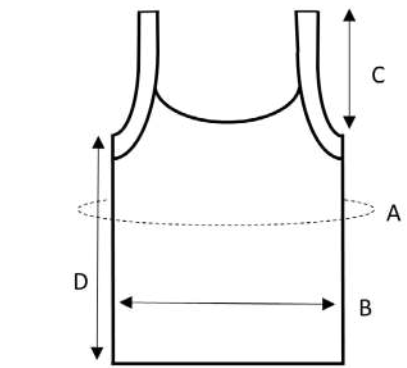
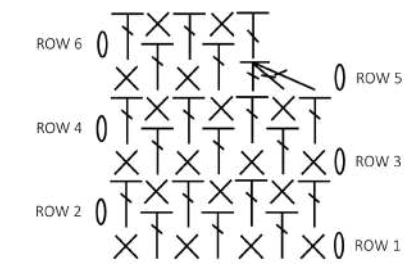
ROW 1: ch 1, sc in first st, \*dc in next st, sc in next st\*, repeat across, turn

ROW 2: ch 1, dc in first st, \*sc in next st, dc in next st\*, repeat across, turn

ROWS 3 & 4: Repeat ROWS 1 & 2.

ROW 5: (DEC ROW) ch 1, dc3tog, LPS across, turn

ROW 6: ch 1, LPS across, turn



### FINISHED MEASUREMENTS

#### A. Bust circumference:

28.5 (32.5, 36, 40, 44.5)(48.5, 52, 56, 60.5)"

#### B. Width Per Panel:

14.5 (16, 18, 20, 22.5)(24, 26, 28, 30.5)"

#### C. Armhole Depth:

7.5 (7.5, 8, 8, 8.5)(8.5, 8.5, 9, 9)"

#### D. Body Length:

11.5 (12, 12, 12.5, 12.5)(13, 13, 13)"

### BODY PANEL x 2

*TIP: Before starting, I recommend highlighting the size you're making in each row to make reading the instructions easier.*  
Example: XS(S, M, L, XL)(2X, 3X, 4X, 5X) sts

Fsc 61(69, 77, 85, 95)(103, 111, 119, 129)

**ROW 1(RS):** ch 1 (never counts as st), sc in first st, \*dc in next st, sc in next st\*, repeat \*\* across, turn - 61(69, 77, 85, 95)(103, 111, 119, 129) sts

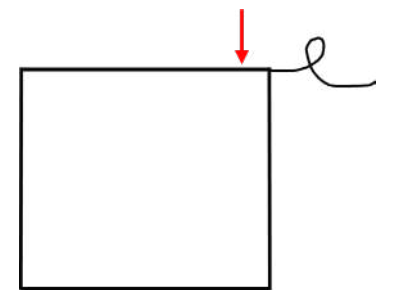
**ROW 2:** ch 1, dc in first st, \*sc in next st, dc

in next st\*, repeat \*\* across, turn - 61(69, 77, 85, 95)(103, 111, 119, 129) sts

Repeat Rows 1 & 2 until body measures approx. 10.5(11, 11, 11.5, 11.5)(12, 12, 12.5, 12.5) inches or desired length. (Keep in mind that the ribbing for the underarm will add an additional 1.5 inches.) f/o leaving a long enough tail to seam side. (Approx. double the length of the body) Move ahead to SHAPE ARMHOLES.

### SHAPE ARMHOLES

Turn your work so that the f/o tail is on your righthand side. Attach a new strand of yarn to the 6th(6th, 6th, 8th, 8th)(8th, 10th, 10th, 10th) st from the right. (See next diagram.)



*NOTE: You are about to start decreasing to shape the armholes. When it states to "LPS", you will simply work a dc above a sc and a sc above a dc. (See Specials Stiches on page 3 for example st chart.)*

**ROW 1:** ch 1, dc3tog (see notes on page 2), LPS across until 9(9, 9, 11, 11)(11, 13, 13, 13) sts remain, dc3tog, leave remaining sts unworked, turn - 45(53, 61, 65, 75)(83, 87, 95, 105) sts

**ROW 2:** ch 1, dc3tog, LPS across until 3 sts remain, dc3tog, turn - 41(49, 57, 61, 71)(79, 83, 91, 101) sts

Repeat ROW 2: 1(3, 4, 4, 5)(7, 8, 10, 12) more x. Last row should have 37(37, 41, 45, 51)(51, 51, 51, 53) sts. Do not f/o. Head to TOP RIGHT.

**NOTE:** If you want more coverage, repeat the following optional row until desired coverage.

**OPTIONAL ROW:** ch 1, LPS across, turn - 37(37, 41, 45, 51)(51, 51, 51, 53) sts

### TOP RIGHT

**ROW 1:** ch 1, LPS in the next 8(8, 10, 12, 14)(14, 14, 14, 16) sts, dc3tog, turn - 11(11, 13, 15, 17)(17, 17, 17, 19) sts

**ROW 2:** ch 1, dc3tog, LPS across, turn - 9(9, 11, 13, 15)(15, 15, 15, 17) sts

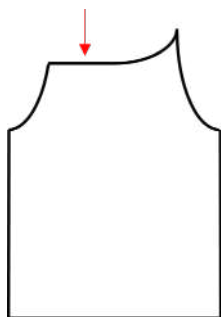
**ROW 3:** ch 1, LPS across until 3 sts remain, dc3tog - 7 (7, 9, 11, 13)(13, 13, 13, 15) sts

Repeat ROWS 2 and 3 until you have 3 sts.

**LAST ROW:** ch 1, dc3tog and f/o. Head to TOP LEFT.

### TOP LEFT

With the other strap on the right-hand side, attach a new strand of yarn to the 13th (13th, 15th, 17th, 19th)(19th, 19th, 19th, 21st) st from the left. (See next diagram.)



**ROW 1:** ch 1, dc3tog, LPS across, turn - 11 (11, 13, 15, 17)(17, 17, 17, 19) sts

**ROW 2:** ch 1, LPS across until 3 sts remain, dc3tog, turn - 9 (9, 11, 13, 15)(15, 15, 15, 17) sts

Repeat ROWS 1 & 2 until you have 3 sts.

**NEXT ROW:** ch 1, dc3tog, turn - 1 st

**FINAL ROW:** ch 1, working across neckline, sc in each st/row until you reach the other side, f/o

Repeat BODY PANEL. Then head to DETERMINE STRAP LENGTH.

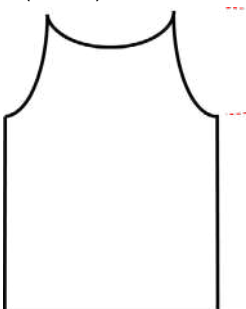
### DETERMINE STRAP LENGTH

**FIND A:** Use the number listed below for the size you're making for A.

13.5 (13.5, 14.5, 14.5, 15.5)(15.5, 15.5, 16.5, 16.5)"

A = \_\_\_\_\_"

**FIND B:** Measure from underarm to TOP LEFT/RIGHT (inches).



Take that total and times it by 2. (Example: 3" x 2 = 6")

B = \_\_\_\_\_"

**FIND C:** EQUATION: A - B = C (Example: 14.5" - 6" = 8.5")

C = \_\_\_\_\_"

Plug in "C" to paragraph that starts with > under STRAP. Then, move ahead to SEAM SIDES.

### SEAM SIDES

**STEP 1:** Place the FRONT PANEL on the floor with the RS facing you. Then, place the BACK PANEL, with the WS facing you, on top of the FRONT PANEL. Attach panels together with st markers.

**STEP 2:** Using the long tail from the BODY (or by attaching a new strand of yarn to the underarm) whip stitch down the side. Repeat for other side.

### STRAP

With smaller hook (3 mm) and with the RS facing you, attach a new strand of yarn to the middle st of an underarm. (If you need help with this next part, check out my YouTube tutorial called How to Add Crochet Ribbing to the End of a Project.)

**NOTE:** If you'd like thicker straps, ch more. If you'd like thinner straps, ch less.

**ROW 1:** ch 10, blsc in 2nd ch from hook, blsc in each ch down, slst 2x across body, turn - 9 sts

**ROW 2:** skip both slsts, blsc in each st up until 1 st remains, sc in last st, turn - 9 sts

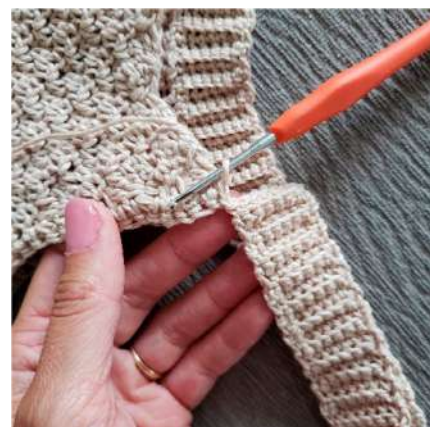
**ROW 3:** ch 1, sc in first st, blsc in each st down, slst 2x across body, turn - 9 sts Repeat ROWS 2 & 3 until body section ends. (NOTE: If you notice your straps are "gapey" or "wavy", try slst 3x across body instead.)

**NEXT ROW:** ch 1, sc in first st, blsc across until 1 st remains, sc in last st, turn - 9 sts

> Repeat NEXT ROW until strap measures (from where it breaks off the top left/right to current row) approx. (C) \_\_\_\_\_ inches. (See next example photo.)



Flip tank over and fold strap. Make sure strap is not twisted and that hook is on the side nearest the body panel. To reconnect the strap, slst into top sc. (See next example photos.)



**NOTE:** At this point, I recommend trying it on to see if the strap length works for you. Adjust as needed.

Repeat ROWS 2 & 3 until you reach the first row of ribbing. With the WS facing you, slst first and last rows together and cut yarn.

Repeat STRAP for the other side. Head to FINISHING.

### FINISHING

Weave in all ends and wear! (Block if desired)



### RIVERBANK TANK | Page 29

created by Kayla Wood  
Level: Easy

### MATERIALS:

- HOOKS: 4.5 mm crochet hook & 6.5 mm hook with 5" cord (or hook needed to obtain gauge)

- YARN: 400 (440, 485, 550, 600)(660, 730, 805, 865)(945, 995) yards of Natural Cotton Maxcolor 4/4 by Circulo Yarn.

NOTIONS: stitch markers, tape measure, threading needle, scissors

### ABBREVIATIONS:

- b/o: bind off (see notes)
- dec: decrease (see notes)
- f/o: finish off
- fsc: foundation single crochet
- RetP: return pass (see notes)
- RS: right side of work
- sc: single crochet
- sc2tog: single crochet 2 together
- sc3tog: single crochet 3 together
- slst: slip stitch
- st(s): stitch(es)
- tks: Tunisian knit stitch
- tps: Tunisian purl stitch
- tss: Tunisian simple stitch
- WS: wrong side of work
- X: times
- y/o: yarn over

### NOTES:

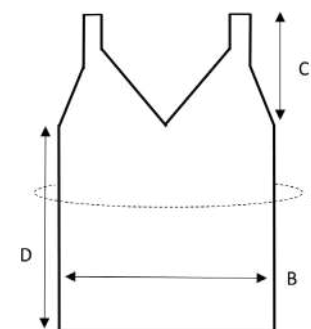
- Sizes are color coded and in following order:
- XS (XS/S, S, M, L) (XL, XL/2X, 2X, 3X) (4X, 5X)
- Recommended negative ease: 1-2 inches
- Garment is worked from the bottom-

up in 2 separate panels.

- # of loops on hook = st count
- If instructions state to repeat \*\* or (), simply repeat the instructions located inside of those symbols.
- dec: place hook under next 2 vertical bars, y/o, pull up a loop
- RetP: y/o, pull through 1 loop on hook, \*y/o pull through 2 loops on hook\*, repeat \*\* until 1 loop on hook remains
- b/o: place hook under next vertical bar, y/o, pull through loop on hook to close it off.

**GAUGE:** 15 sts x 13 rows = 4" (with 6.5 mm hook)  
ch 15.

Row 1: tss in next 2nd ch from hook, tss in next ch, \*tps in next 3 chs, tss in next 3 chs\*, repeat \*\* across, RetP - 15 sts  
Row 2: tss in next 2 sts, \*tps in next 3 sts, tss in next 3 sts\*, repeat \*\* across, RetP - 15 sts  
Rows 3-13: Repeat ROW 2.



### FINISHED MEASUREMENTS

#### A. Bust circumference:

27 (30.5, 33.5, 36.5, 40)(43, 46.5, 49.5, 53)(56, 59)"

#### B. Width Per Panel:

13.5 (15.25, 16.75, 18.5, 20)(21.5, 23.25, 24.75, 26.5)(28, 29.5)"

#### C. Armhole Depth:

7.5 (7.5, 7.5, 8, 8)(8.5, 8.5, 8.5, 8.5)(9, 9)"

#### D. Body Length:

13 (13.5, 13.5, 14, 14)(14.5, 14.5, 15, 15) (15.5, 15.5)"

Example photos for strap edging.



### BODY PANEL x2

**TIP:** Before starting, I recommend highlighting the size you're making in each row to make reading the instructions easier.

With smaller hook (4.5 mm), fsc 50 (56, 62, 68, 74)(80, 86, 92, 98)(104, 110), turn

**NOTE:** When working the next ROW, place hook under 2 loops just like you would if you were working a single crochet.

Switch to larger Tunisian crochet hook (6.5 mm).

**TIP:** When working into the last st, always place hook under 2 loops for a clean edge.

**ROW 1 (RS):** tight ch 1, tss in first 2 sts, \*tps in next 3 sts, tss in next 3 sts\*, repeat \*\* across, RetP - 51 (57, 63, 69, 75)(81, 87, 93, 99)(105, 111) sts

**ROW 2:** tss in next 2 sts, \*tps in next 3 sts, tss in next 3 sts\*, repeat \*\* across, RetP - 51 (57, 63, 69, 75)(81, 87, 93, 99) (105, 111) sts

Repeat ROW 2 until body measures approx. 13.5 (13.5, 13.5, 14, 14)(14.5, 14.5, 15, 15)(15.5, 15.5) or desired length.

1st PANEL = BACK PANEL: b/o (see notes on page 2) and cut yarn. Repeat BODY PANEL.

2nd PANEL = FRONT PANEL: Cut yarn leaving a long enough tail to seam side (do **not** b/o) and head to RIGHT STRAP.

### RIGHT STRAP

With the RS still facing you, attach a new strand of yarn to the 5th (5th, 6th, 7th, 8th)(8th, 8th, 9th, 9th)(9th, 9th) st from the right by going through the st like a full stitch.

**NOTE:** You are about to start decreasing

to shape the armholes and neckline.  
When it states to "continue st pattern across", you will simply work a tss above a tss and a tps above a tps.

**ROW 1:** dec (see notes), continue st pattern across until you have a total of 18 (21, 23, 25, 25)(29, 31, 33, 34)(37, 40) loops on hook, dec 1(1, 1, 1, 2)(2, 2, 2, 3)(3, 3)x, **tk**s in next st, RetP - 20 (23, 25, 27, 28)(32, 34, 36, 38)(41, 44) sts

**ROW 2:** dec, continue st pattern across until 3(3, 3, 3, 5)(5, 5, 5, 7)(7, 7) sts remain, dec 1(1, 1, 1, 2)(2, 2, 2, 3)(3, 3)x, tss in last st, RetP - 18 (21, 23, 25, 25)(29, 31, 33, 34)(37, 40) sts

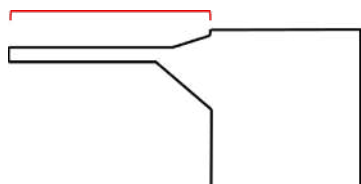
**ROWS 3 - 7:** Repeat ROW 2. (ROW 7 should have 8 (11, 13, 15, 10)(14, 16, 18, 14) (17, 20) sts)

**ROW 8:** continue st pattern across until 3(3, 3, 3, 5)(5, 5, 5, 7)(7, 7) sts remain, dec 1(1, 1, 1, 2)(2, 2, 2, 3)(3, 3)x, tss in last st, RetP

Repeat ROW 8 until there are 4 (4, 4, 4, 6)(6, 6, 6, 8)(8, 8) loops on hook (or desired strap thickness).

**LAST ROW:** continue st pattern across, RetP - 4 (4, 4, 4, 6)(6, 6, 6, 8)(8, 8) sts

Repeat LAST ROW until strap (from underarm to current row) measures approx. 15 (15, 15, 16, 16)(17, 17, 17, 17) (18, 18)" or desired strap length. (See next diagram.) I recommend using st markers to attach panels together to determine perfect strap length for YOUR body. b/o leaving a long enough tail to sew strap and head to LEFT STRAP.



## LEFT STRAP

With the RS still facing you, attach a new strand of yarn to the center st on BODY. (The same st that you worked the last tks in for the RIGHT STRAP.)

**ROW 1:** dec 1(1, 1, 1, 2)(2, 2, 2, 3)(3, 3)x, continue st pattern across until 7(7, 8, 9, 10)(10, 10, 11, 10)(11, 11) sts remain, dec, tks in next st, leave remaining sts unworked, RetP - 20 (23, 25, 27, 28)(32, 34, 36, 38)(41, 44) sts

**ROW 2:** dec 1(1, 1, 1, 2)(2, 2, 2, 3)(3, 3)x, continue st pattern across until 3 sts remain, dec, tss in last st, RetP - 18 (21, 23, 25, 25)(29, 31, 33, 34)(37, 40) sts

**ROWS 3 - 7:** Repeat ROW 2. (ROW 7 should have 8 (11, 13, 15, 10)(14, 16, 18, 14) (17, 20) sts)

**NEXT ROW:** dec 1(1, 1, 1, 2)(2, 2, 2, 3)(3, 3)x, continue st pattern across, RetP

Repeat NEXT ROW until strap has 4 (4, 4, 4, 6)(6, 6, 6, 8)(8, 8) loops on hook (or desired strap thickness).

**LAST ROW:** continue st pattern across, RetP - 4 (4, 4, 4, 6)(6, 6, 6, 8)(8, 8) sts

Repeat LAST ROW until strap (from underarm to current row) has the same # of rows as the RIGHT STRAP. b/o leaving a long enough tail to sew strap. Head to FINISHING.

## FINISHING

### 1. SEAM SIDES

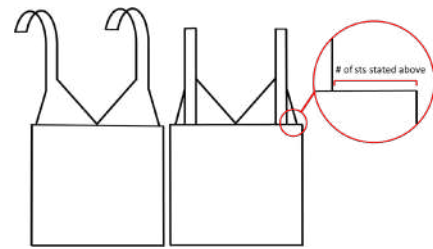
**STEP A:** Place the FRONT PANEL on the floor with the RS facing you. Then, place the BACK PANEL, with the WS facing you, on top of the FRONT PANEL. Attach panels together with st markers.

**STEP B:** Using the long tail from the BODY (or by attaching a new strand of yarn to the underarm) whip st down the side until 3" remain. Repeat for other side.

## 2. ATTACH STRAPS

**STEP A:** With the WS of the BACK PANEL facing you, fold front straps over.

**STEP B:** Count 11 (11, 12, 13, 14)(14, 14, 15, 15)(15, 15) sts over from underarm seam and begin seaming the strap to the back panel in the next st using the whip stitch. Repeat for other strap. (See next diagram.)



## 3. ARMHOLE EDGING

**STEP A:** With the smaller hook (4.5 mm) and with the RS of the underarm facing you, attach a new strand of yarn to the st just left of the seam line.

**STEP B:** ch 1, sc across until you reach front or back strap (working between and through the 2 vertical bars just like a Tunisian Full St), sc2tog at corner, sc up and around strap until 1 st before BODY (working into the post for less gaps. See example photos on pg. 3.), sc2tog, sc (working between and through the 2 vertical bars just like a Tunisian Full St) until end, slst into first st, f/o. Repeat for other armhole.

## 4. NECKLINE EDGING

**STEP A:** With the RS of the BACK PANEL facing you, attach a new strand of yarn to the middle st.

**STEP B:** ch 1, sc around just like you did for the armhole edging but this time, place a sc3tog when you reach the V, slst into first st, f/o

## 5. Weave in ALL ends and wear!



## SKIRT | Page 29

Created by Marie Castro  
Size: S but adjustable (see note below)  
Level: Easy

### MATERIALS:

1 ball of Charme in each color - 8001, 3622, 2931 and 5767.  
Crochet hook G-6  
Scissors

### STITCH GLOSSARY AND

#### ABBREVIATIONS:

stitch: st  
make: mk  
skip: sk  
chain: ch  
slip st: sl st  
single crochet: sc  
double crochet: dc  
elongated dc  
FPdc  
BPdc  
Increase: inc  
decrease: dec  
round: rnd  
end of row/rnd: eor.

### NOTES:

Instructions are for a small size. In order to adjust pattern to your size you have to measure your waist and start with a foundation chain according to this measurement and according to pattern stitch.

### Chart 1 - crochet in the round - close rounds with 1 sl st.

Make a chain cord according to your waist measurement and close with 1 sl st. Front and back are worked simultaneously. Start with color 2931.

Rnd 1: ch 2, 2 dc, \*ch 1, sk 1 base st, 3 dc\*.

rep from \* to \* until eor.

Rnd 2: rep rnd 1. Fasten off and switch to color 5767.

Rnd 3: join color 5767 in the third dc of any group of 3 dc. \*Ch 2, 1 elongated dc into chains of 2 rnds below, 1 dc, ch 1, sk 1 base st\*. Rep from \* to \* until eor.

Rnd 4: ch 2, 2 dc, \*ch 1, sk 1 base st, 3 dc\*. Rep from \* to \* until eor. Fasten off and switch to color 2931.

Rnd 5: Join color 3622 in the third dc of any group of 3 dc. \*Ch 2, 1 elongated dc into chains of 2 rnds below, 1 dc, ch 1, sk 1 base st\*. Rep from \* to \* until eor.

Rnd 6: ch 2, 2 dc, \*ch 1, sk 1 base st, 3 dc\* rep from 8 to \* until eor. Fasten off and switch to color 8001.

Rnds 7 & 8: Use color 8001 and rep rnds 3 & 4. Fasten off and switch to color 2931.

Rnds 9 & 10: Use color 2931 and rep rnds 5 & 6.

Rep rnds 3 - 10 following the same color sequence until desired length. Fasten off.

### Chart 2 - crochet in the round - close rounds with 1 sl st.

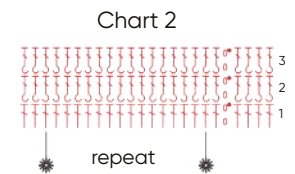
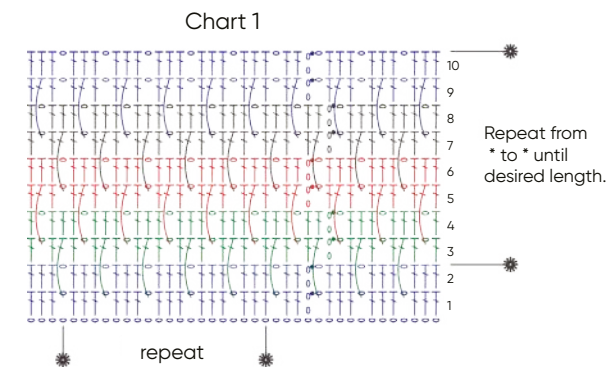
Join color 3622 at waistline, into the foundation chain of chart 1.

Rnd 1: ch 2, 1 dc in each base st.

Rnd 2: ch 2, 1 FPdc, \*2 BPdc, 2 FPdc\* rep from \* to \* until eor.

Rnd 3: rep rnd 2. Fasten off.

Cord: Use color 3622 to make a chain cord and insert it into rnd 2 of chart 2 to tie around waist.



Stitch key	
o	ch
x	sc
•	sl st
F	dc
f	elongated dc
F	FPdc
f	BPdc
■	Charme 8001
■	Charme 5767
■	Charme 2931
■	Charme 3611



## LONG DRESS | Page 29

Created by Marie Castro

Size: S

30.75" chest width X approx. 45" tall

Level: Intermediate

### MATERIALS:

3-4 balls of Charme color 7563

Crochet hook G-6

Tapestry needle

Scissors, measuring tape and stitch marker.

### STITCH GLOSSARY AND ABBREVIATIONS:

stitch: st

make: mk

skip: sk

chain: ch

slip st: sl st

single crochet: sc

double crochet: dc

Shell st: 2 dc, ch 2, 2 dc in the same base st.

Increase: inc

decrease: dec

round: rnd

end of row/rnd: eor.

### NOTES:

Size Small measurements 30.75" chest width X approx. 45" tall

Instructions are for a small size. In order to adjust pattern to your size you have to measure the circumference above bust, under armpit and start with a foundation chain according to this measurement and according to pattern stitch.

Before starting, make a chain cord according to your measurement but do not close. Mk rnd 1 and measure on you again, if it is correct close with 1 sl st, if it is too long, undo the remaining chains before closing ring.

### Chart 1 - crochet in the round - close rounds with 1 sl st.

Make a chain cord according to your measurement (S = approx. 24.5") and close with 1 sl st.

Front and back are worked simultaneously.

Rnd 1: ch 3, 1 dc, ch 2 plus 2 dc in the same base stitch forming a shell, \*ch 3, sk 5 base sts, 3 dc, ch 3, sk 5 base sts, (2

dc, ch 2, 2 dc) into same base st forming a shell\* rep from \* to \* until eor. Close with 1 sl st. Note: at the end if st count does not match, you can adjust the end by skipping more or less sts and it won't affect the final look because it will be imperceptible.

Rnds 2 - 5: 2 sl sts until shell space chains, ch 3, 1 dc, ch 2 + 2 dc in the same base st forming a shell, \*ch 3, sk 5 base sts, 3 dc, ch 3, sk 5 base sts, mk 1 shell into shell space of rnd below\* rep from \* to \* until eor.

Rnd 6: 2 sl sts until shell space chains, ch 3, \*sk 2 base sts, 3 dc into ch 3 of rnd below, 1 dc in each dc (3x), 3 dc into ch 3 of rnd below, sk 2 base sts, 1 dc into shell chain space of rnd below\* rep from \* to \* until eor.

Rnds 7 - 19: ch 3, 1 dc in each base st. Close with 1 sl st. Note: if necessary add more dc rnds to adjust bust length.

Rnd 20: ch 3, 1 dc, ch 2 plus 2 dc in the same base stitch forming a shell, \*ch 2, sk 4 base sts, mk 1 shell (2 dc, ch 2, 2 dc)\* rep from \* to \* until eor. close with 1 sl st.

Rnds 21 - 25: 2 sl sts until shell space chains, ch 3, 1 dc, ch 2 plus 2 dc into the same base st forming a shell, \*ch 2, sk 6 base sts, mk 1 shell into shell chain space of rnd below\* rep from \* to \* until eor. Close with 1 sl st.

Rnd 26: 2 sl sts until shell space chains, ch 3, \*sk 2 base sts, mk 4 dc into ch 2 of rnd below, sk 2 base sts, mk 1 dc into shell chain space of rnd below\* rep from \* to \* until eor. Close with 1 sl st.

Rnds 27 - 29: ch 3, 1 dc in each base st. Close with 1 sl st.

Rnd 30: ch 3, 5 dc, \*2 dc tog in the same base st = 1 inc, 6 dc, rep from \* to \* until eor. Close with 1 sl st.

Rnd 31: ch 3, 1 dc in each base st. Close with 1 sl st.

Rnd 32: ch 3, 4 dc, \*2 dc tog in the same base st = 1 inc, 5 dc\* rep from \* to \* until eor. Close with 1 sl st. Do not cut yarn.

### Chart 2 - crochet in the round - close rnds with 1 sl st.

Rnd 1: \*ch 3, 3 dc in the same base st, sk 3 base sts, 1 sl st\* rep from \* to \* until eor. Close with 1 sl st into ch 1.

Rnd 2: 3 sl sts until edge, turn to WS (this rnd will be worked in the WS), \*ch 3, 3 dc into ch 3 of rnd below, 1 sl st into next edge\* rep from \* to \* until eor. Close with 1 sl st into ch 1.

Rnd 3: 3 sl sts until edge, turn to RS (this rnd will be worked on the RS), \*ch 3, 3 dc into ch 3 of rnd below, 1 sl st into next edge\* rep from \* to \* until eor. Close with 1 sl st into ch 1. Rep rnds 2 & 3 until desired length for hips: Small size: 9" long or desired length. Do not cut yarn.

Chart 3 - crochet in the round - close rnds with 1 sl st.

Rnd 1: 3 sl sts until edge, \*ch 5, 1 sl st into next edge\* rep from \* to \* until eor. Close with 1 sl st.

Rnd 2: ch 3, 3 dc, \*2 dc in the same base st = 1 inc, 4 dc\* rep from \* to \* until eor. Close with 1 sl st.

Rnd 3: ch 7, sk 4 base sts, 1 sl st\* rep from \* to \* until eor. Close with 1 sl st into ch 1.

Rnd 4: ch 7, 1 sl st into ch loop of rnd below (insert st marker into this loop), \*ch 7, 1 sl st into next chain loop\* rep from \* to \* until eor. Note: mk last sl st into first ch loop, working in spiral)

Rep rnd 4 until desired length. Crochet in spiral without closing rnds. Move st marker to the first chain loop to keep track of rnds. Small size: 10" long or desired length. Do not cut yarn. Note: this pattern stretches a lot so my suggestion is to make rnds and stretch them while working. Try on the piece at this point to make sure the number of rnds are right for you.

Chart 4 - crochet in the round - close rnds with 1 sl st.

Rnd 1: \*ch 5, 1 sl st into next chain loop\*, rep from \* to \* until eor. (insert st marker into this loop). Close with 1 sl st into ch 1.

Rnd 2: ch 3, 1 dc, \*ch 2, sk 2 base sts, 2 dc\*, rep from \* to \* until eor. Close with 1 sl st.

Rnd 3: ch 3, 1 dc, in each dc until eor. Close with 1 sl st.

Rnd 4: ch 3, 1 dc, ch 2 plus 2 dc in the same base st forming a shell, \*ch 2, sk 4 base sts, 1 Shell st\*, rep from \* to \* until eor. Close with 1 sl st.

Rnds 5 - 16: 2 sl sts until shell ch space, ch 3, 1 dc, ch 2 plus 2 dc in the same base st forming a shell, \*ch 2, sk 6 dc, mk 1 Shell st into Shell chain space of rnd below\*, rep from \* to \* until eor. Close with 1 sl st.

Rnd 17: ch 3, 1 dc, \*1 dc in the shell chain space of rnd below, 1 dc in dc (6x)\* rep from \* to \* until eor. Close with 1 sl st.

Rnd 18: ch 3, 1 dc, \*ch 2, sk 2 base sts, 2 dc\* rep from \* to \* until eor. Close with 1 sl st.

Rnd 19: 3 sl sts until ch 2, ch 3, 1 dc, \*ch 2, sk 2 base sts, 2 dc\* rep from \* to \* until eor. Close with 1 sl st.

Rnd 20: ch 3, 1 dc in each base st. Close with 1 sl st. Fasten off. Note: You can adjust dress to desired length by adding or removing rnds.

Chart 1

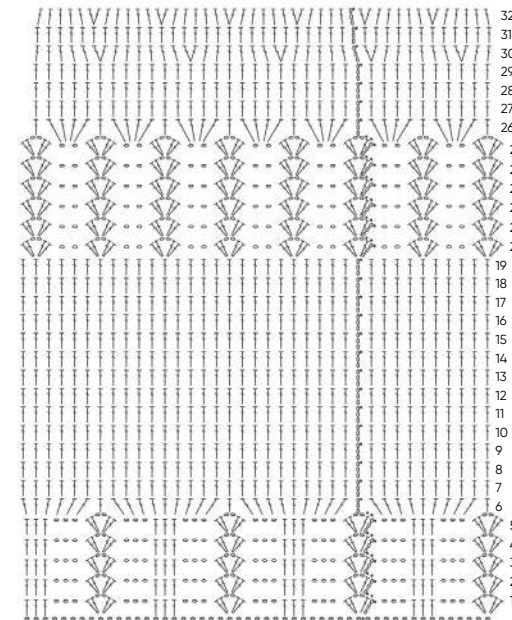


Chart 2

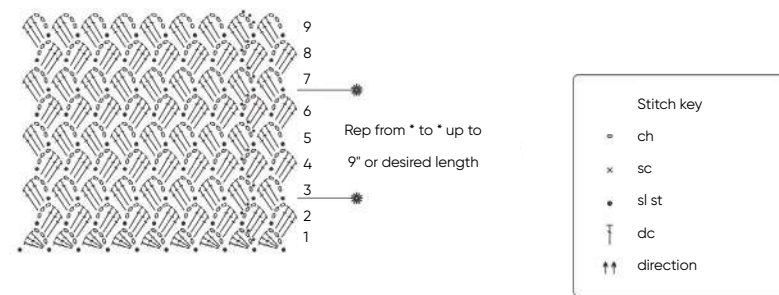


Chart 3

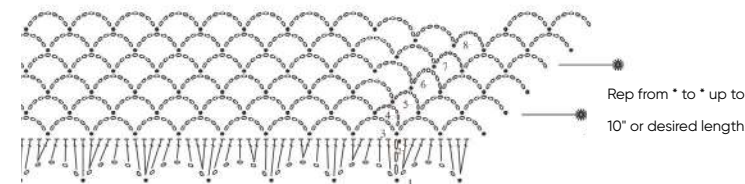
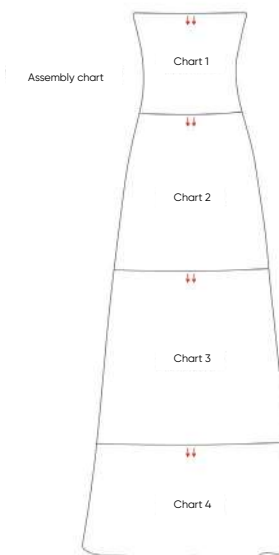
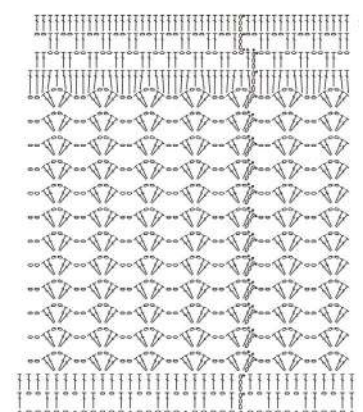


Chart 4



## WHOOPEE PENCIL DRESS

Page 35

Created by Luciana Panza

Sizes: 6 (10, 14, 16)

Finished Body:

31.5 (33.5, 36, 41) inches / 80 (85, 91.5, 103.5) cm

Level: Intermediate

### MATERIALS:

3 cakes of Whoopee color 9377

Crochet hook D-3/3.25mm, or size to obtain gauge

Tapestry needle

Fabric to line dress

Paper, pencil, scissors and measuring tape.

Stitch markers

### STITCH GLOSSARY AND ABBREVIATIONS:

stitch: st

make: mk

skip: sk

chain: ch

slip st: sl st

single crochet: sc

half double crochet: hdc

double crochet: dc

FPdc: Front post dc

BPdc: Back post dc

dc cluster: 4 dc closed together in the same base st

dc cluster: 5 dc closed together in the same base st

picot: ch 3, 1 sl st into first ch

Increase: inc

decrease: dec

Pattern A - chart 1

Pattern B - chart 2

Pattern C - chart 3

Pattern D - chart 5

Crochet edge - chart 4

### GAUGE:

20 S x 11 R = 10 cm / 4" over chart 1 - Pattern A using hook D-3.

### Pattern Notes:

1. The body is worked in the round from the underarms to the hem. The bodice front and back are worked separately from the body to the shoulders.

2. Dress is intended to fit with

approximately 2" negative ease for the body.

**3.** Pattern is charted only.

**4.** Transfer measurement chart to paper to guide you along. Arrows indicate direction or work

## INSTRUCTIONS

### Body

Ch 156 (168, 180, 204), join with a sl st being careful to not twist the ch.

**Rnds 1–28:** Work Chart 1 (4 reps of 7 rnds), 13 (14, 15, 17) motifs of 12 sts each.

**Rnds 29–49:** Work Chart 2 (3 reps of 7 rnds), 13 (14, 15, 17) motifs of 12 sts each.

Note: Chart 2 will block wider than Chart 1.

**Rnds 50–69:** Work Chart 3, increasing 8 (20, 24, 24) sts evenly spaced around work. 164 (188, 204, 228) sts

Note: Shorten or lengthen dress here by working fewer or more rounds of Chart 3.

**Rnd 70:** Work Chart 4, fasten off.

### Bodice

With RS facing, join yarn with a sl st in foundation chain in the same st as Rnd 70 was fastened off.

**Rnds 1–3:** Work Chart 3. 156 (168, 180, 204) sts

### Separate Front/Back Bodice

#### Back

**Rows 1–12 (12, 14, 14):** Work Chart 5 over 68 (78, 84, 94) sts, turn.

#### Left Shoulder

**Row 15 (RS):** Work Chart 5 over 21 (25, 26, 30) sts, turn.

**Row 16 (WS):** Continuing with Chart 5, dec 2 sts at neck edge 3 times, then 1 st at neck edge 2 (4, 4, 5) times, fasten off. 13 (15, 16, 19) sts.

#### Right Shoulder

With RS facing, sk 26 (28, 32, 34) center neck sts and join yarn with a sl st in next st on Row 15.

**Row 1:** Work Chart 5 over 21 (25, 26, 30) sts, dec 2 sts at neck edge 3 times, then 1 st at neck edge 2 (4, 4, 5) times. 13 (15, 16, 19) sts.

Work one row even, fasten off.

#### Front

Sk 14 (16, 18, 20) sts on bodice separation Row 1, join yarn with a sl st in the next st and work as for back. 68 (78, 84, 94) sts

### Assembly

Seam shoulders.

### Finishing

With RS facing, join yarn with a sl st in either shoulder seam.

Work 2 rounds of Chart 5, evenly spacing sts around neckline.

Work Chart 4 around neckline, fasten off.

With RS facing, join yarn with a sl st at center underarm and work Chart 4 evenly spaced around each armhole, fasten off.

Block dress to measurements.

### Lining

Using dress as a template and lining fabric, sew a slip to wear underneath the dress.



## WHOOPEE TOP | Page 36

Created by Vera Lima

**Sizes:** 6 (10, 14)

### Finished measurements

**Bust:** 35 (38, 42) inches / 89 (96.5, 106.5) cm

Level: Intermediate

### MATERIALS:

2 (3, 3) cakes of Whoopee color 9377

Circular needle US 3 (3.25mm)

29-inches long, or size to obtain gauge

4 cable needles in size used to obtain gauge

Tapestry needle

Paper, pencil, scissors and measuring tape.

### STITCH GLOSSARY AND ABBREVIATIONS:

st: stitches

CO: cast on

BO: bind off

CN: cable needle

rep: repeat

mk: make

dec: decreases

inc: increases

RS: right side

WS: wrong side

K: knit

K2tog: knit 2 sts together

P: purl

P2tog: purl 2 sts together

Stockinette st – follow chart 1: St st

2x2 Rib – follow chart 2

2x2 Rib – knit in the round, follow chart 3

### GAUGE:

19 S x 26 R = 10 cm/4" in St st using US 3 (3.25mm) circular needle.

### PATTERN NOTES:

1. Front and back are the same, make one each.

2. Where only one number appears, it applies to all sizes.

3. Top is intended to fit closely with minimal ease.

4. Transfer measurement chart to paper to guide you along. Arrows indicate direction.

### INSTRUCTIONS

#### Back

Cast on 72 (78, 88) sts.

Work in St st until piece measures 6.25 (6.25, 6.75) inches / 16 (16, 17) cm from CO, ending after a WS row.

#### Shape bust:

**Row 1 (RS):** K1, inc 1, knit to last st, inc 1, k1.

**Row 2:** Purl across row.

Rep Rows 1 & 2 6 more times. 86 (92, 102) sts

Work even until piece measures 11 (11, 11.5) inches / 28 (28, 29) cm from CO.

#### Shape raglan armholes:

**Row 1 (RS):** K1, (k2tog) twice, knit to last 5 sts, (k2tog) twice, k1. 81 (88, 98) sts

**Row 2:** Purl

Rep Rows 1 & 2 4 (5, 6) more times, then dec 1 st each side of bodice every RS row

12 (12, 14) times. 42 (44, 46) sts

Place sts on CN and set aside.

**Front:** Make the same as back.

### Sleeves

#### Make 2

CO 80 (88, 92) sts.

Work 2x2 rib (chart 2) until piece measures 3.25 (3.25, 3.5) inches / 8 (8, 9) cm from CO.

#### Shape raglan sleeve cap:

**Row 1:** Maintaining 2x2 Rib as much as possible, p1, p2tog, work to last 3 sts, p2tog, p1. 78 (86, 90) sts

**Row 2:** Work in pattern as established across row.

Rep Row 1 & 2 21 more times. 36 (44, 48) sts.

Place sts on CN and set aside.

### Assembly

Seam sleeves to body along raglan shaping 6.75 (7.5, 8.5) inches / 17 (19, 21.5) cm.

Seam sides 11 (11, 11.5) inches / 28 (28, 29) cm and underarms 3.25 (3.25, 3.5) / 8 (8, 9) cm.

### Finishing

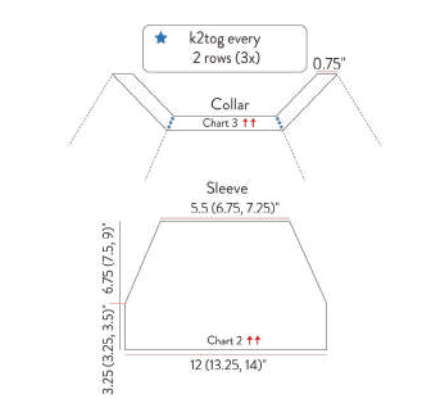
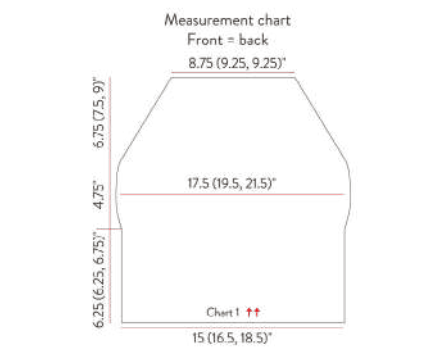
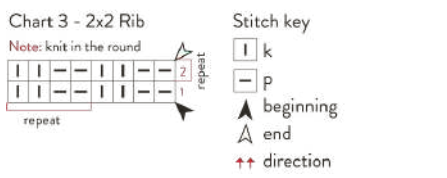
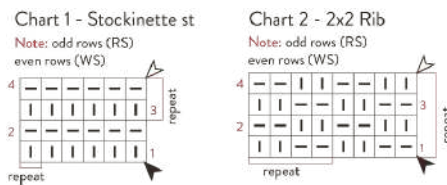
#### Collar

Return all live sts to 29-inch circular needle: 42 (44, 46) back sts; 36 (44, 48) left sleeve sts; 42 (44, 46) front sts; and 36 (44, 48) right sleeve sts. 156 (176, 188) sts Place marker and join to work in the round.

**Rnd 1:** Following 2x2 Rib Chart 3 and maintaining Rib pattern as much as possible, work in Rib pattern to the last back st, k2tog, work in Rib pattern to the last left sleeve st, k2tog, work in Rib pattern to the last right sleeve st, k2tog (last right sleeve and first back st).

**Rnd 2:** Work in pattern as established. Rep Rnds 1 & 2 2 more times. 144 (164, 172) sts

BO all sts in pattern.



## WHOOPEE FLARE HEM DRESS

### Page 36

Created by Luciana Panza

Sizes: 6 (10, 14)

Finished Bust:

31.5 (34.5, 38.5) inches / 80 (87.5, 98) cm

Level: Advanced

### MATERIALS:

5 (6, 7) cakes of Whoopee color 9134

Crochet hook D-3/3.25mm, or size to obtain gauge

Tapestry needle

1 button (0.5"/1.25 cm)

Fabric to line dress

Paper, pencil, scissors and measuring tape.

### STITCH GLOSSARY AND ABBREVIATIONS:

stitch: st

make: mk

skip: sk

chain: ch

slip st: sl st

single crochet: sc

sc bump on back

double crochet: dc

treble crochet: tr

2 dc cluster: 2 dc closed together in the same base st

picot: ch 3, 1 sl st into first ch

Increase: inc

decrease: dec

Pattern A – chart 1

Pattern B – chart 2

Pattern C – chart 3

Pattern D – chart 4

Crochet edge – chart 5

**GAUGE:** 17.75 S x 9.5 R = 10 cm / 4" over chart 2 – Pattern B using hook D-3.

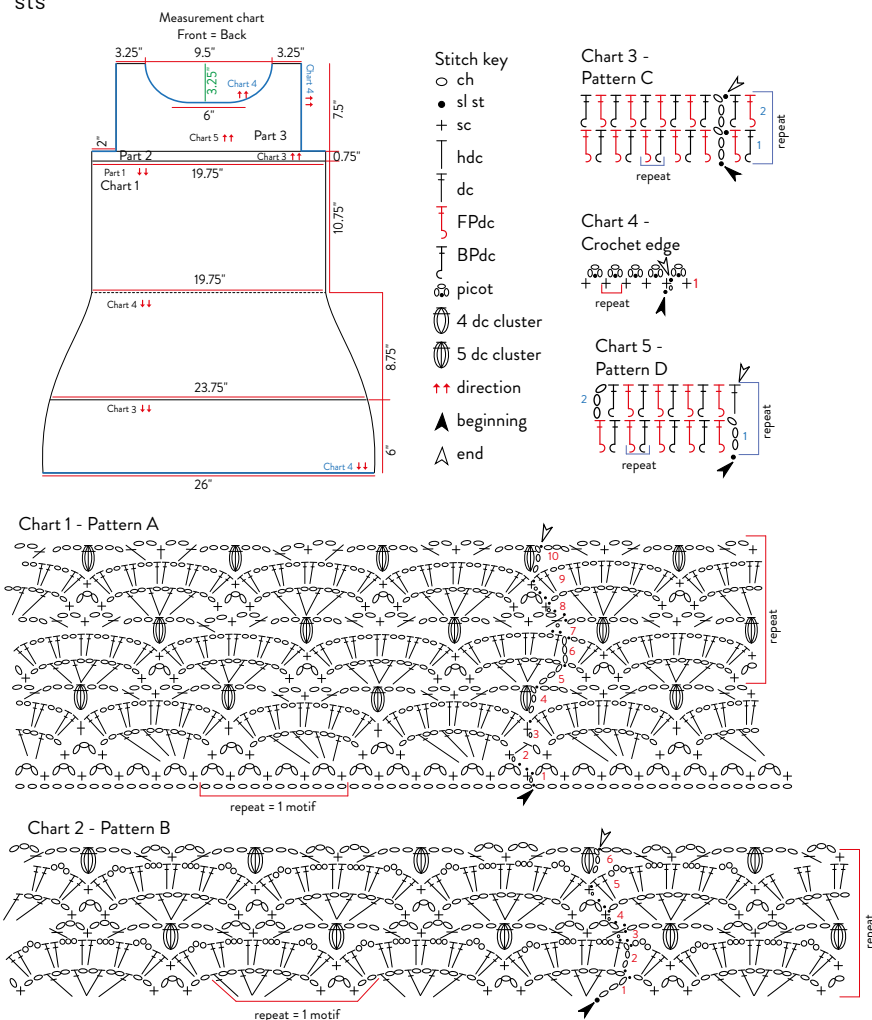
### PATTERN NOTES:

1. The dress is worked in the round from the waist to the bodice, with the front and back bodice worked separately to the shoulders.

2. The lower part of the dress is worked from the waist to the hem.

3. Dress is intended to fit with approximately 2–2.5" negative ease at the bust.

4. Pattern is charted only.



5. Transfer measurement chart to paper to guide you along. Arrows indicate direction.

### INSTRUCTIONS

#### Body

Ch 140 (160, 180), join with a sl st being careful to not twist the ch.  
Rnds 1–23: Work Chart 1, 14 (16, 18) motifs of 10 sts each.

#### Separate Front/Back Bodice

##### Back

**Rows 24–33:** Work Chart 2 over 60 (70, 80) sts, turn.

**Row 34:** Continue Chart 2 over 30 (35, 40) sts, join a second ball of yarn with a sl st in the next st and work the remaining 30 (35, 40) sts.

**Rows 35–39:** Continue Chart 2 working each side of upper back opening separately.

Fasten off after Row 39.

##### Front

**Row 24:** Sk 10 sts, join a second ball of yarn with a sl st in next st, work Chart 2 over 60 (70, 80) sts, turn.

Rows 25–35: Continue Chart 2.

#### Shape Neckline/Front Shoulders

**Row 36:** Continue Chart 2 over 20 (25, 25) sts, sk next 20 (20, 30) sts, join a second ball of yarn with a sl st in next st and work remaining 20 (20, 25) sts.

**Rows 36–39:** Working each side separately, continue Chart 2 while at the same time, dec 1 st at neck edge 5 (6, 6) times. 15 (19, 19) sts each shoulder. Fasten off after Row 39.

With RS facing, seam shoulders.

Sew button on top left of back opening as shown on the schematic.

#### Neckline Finishing

Join yarn with a sl st in either shoulder seam.

Work Chart 5, evenly spacing sts around neckline and back opening, fasten off.

#### Sleeves (Make 2)

Sleeves are worked in the round from the armhole to end of sleeve.

With RS facing, join yarn with a sl st in center underarm.

**Rnds 1–13:** Work Chart 4, evenly spacing 60 (70, 80) sts around armhole. Fasten off after Rnd 13.

#### Skirt

With RS facing, join yarn with a sl st in foundation chain joining sl st.

**Rnd 1:** Work Chart 3, increasing 16 (18,

20) sts evenly spaced, 52 (59, 67) motifs of 3 sts each. 156 (177, 201) sts

**Rnds 2–11:** Continue Chart 3.

**Rnd 12:** Work Chart 4, increasing 4 (13, 19) sts evenly spaced, 16 (19, 22) motifs of 10 sts each. 160 (190, 220) sts

**Rnds 13–25:** Continue Chart 4.

**Rnd 26:** Continue Chart 4, increasing 60 (70, 80) sts evenly spaced, 22 (26, 30) motifs. 220 (260, 300) sts

**Rnds 27–39:** Continue Chart 4.

**Rnd 40:** Continue Chart 4, increasing 120 (140, 160) sts evenly spaced, 34 (40, 46) motifs. 340 (400, 460) sts

Chart 1 - Pattern A

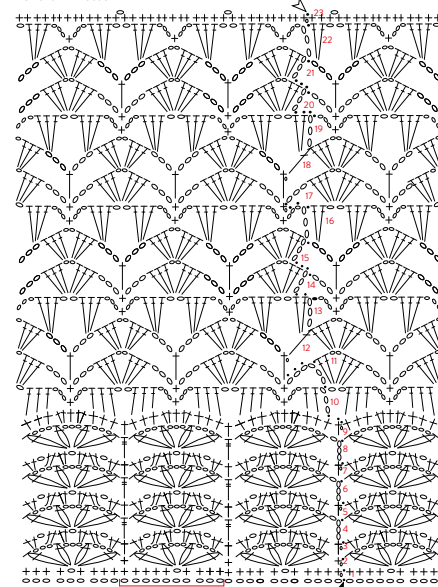


Chart 2 - Pattern B

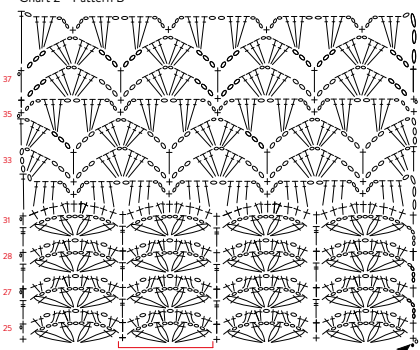
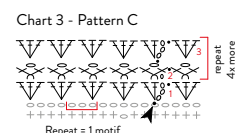
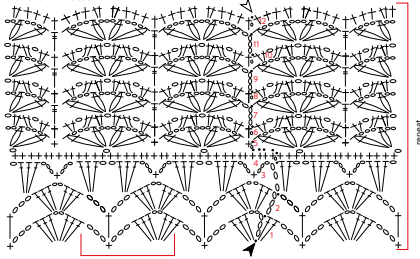


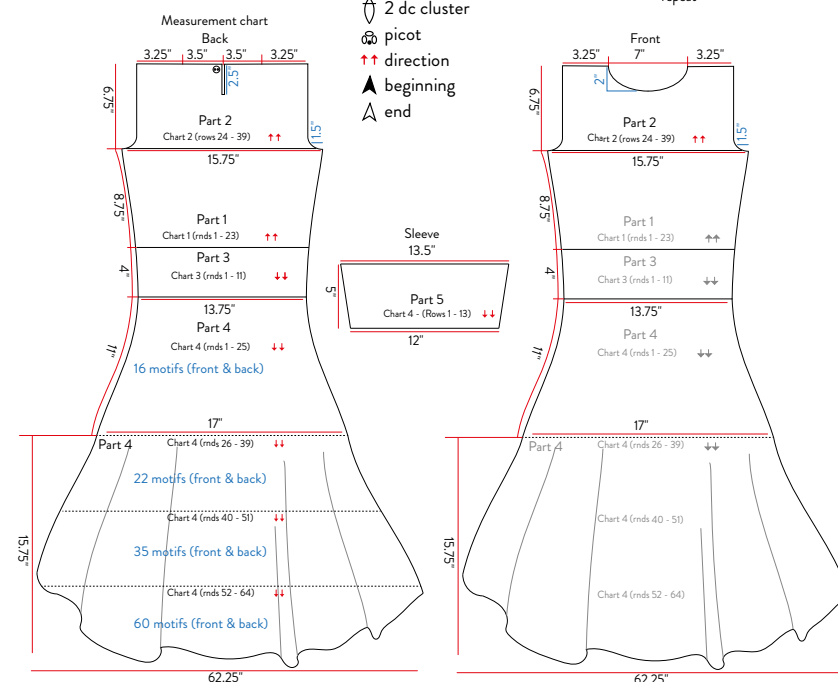
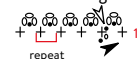
Chart 4 - Pattern D



#### Stitch key

- ch
- sl st
- + sc
- ⊥ sc bump on back
- dc
- tr
- ⊖ 2 dc cluster
- ⊖ picot
- ↑↑ direction
- ▲ beginning
- △ end

Chart 5 - Crochet edge



**Rnds 41–51:** Continue Chart 4.

**Rnd 52:** Continue Chart 4 increasing 240 (140, 160) sts evenly spaced, 58 (68, 78) motifs. 580 (680, 780) sts

**Rnds 53–64:** Continue Chart 4.

#### Hemline Finishing

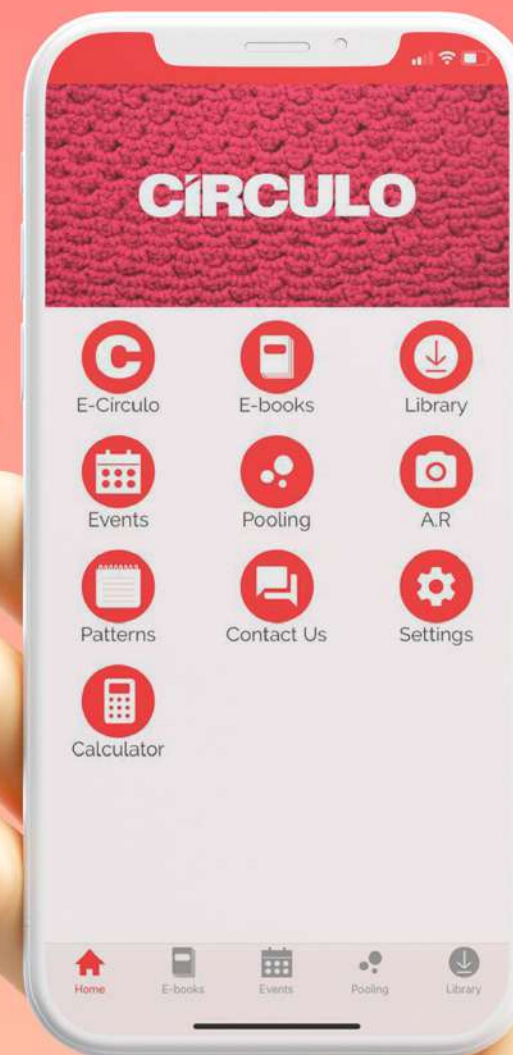
Work Chart 5 around hemline, fasten off.

#### Lining

Using dress as a template and lining fabric, sew a slip to wear underneath the dress.

# ♥ APP LOVE CÍRCULO

Love Círculo app connects artisans around the world to the handmade universe!



- ♥ Exclusive tools
- ♥ Helping to make life easier for artisans
- ♥ Learn more about pooling technique
- ♥ Calculate the price of your projects



Love Círculo App is free and available for Android and iOS mobile devices.

Available in Portuguese, English and Spanish, the app features exclusive materials released first-hand with information about the world of crafts. It has free and exclusive eBooks on a wide range of topics, such as crochet, knitting, fashion and decoration!

**CÍRCULO**  
www.circuloyarns.com

# THE LEGENDARY BRAZILIAN COTTON



Circulo's mission: High quality cotton, wide color chart, products for all types of projects, and a lot of love and affection in the manufacture of yarns. Always looking and seeking for the best for artisans around the world.

## **CIRCULO**

[www.circuloyarns.com](http://www.circuloyarns.com)



@circuloproductos



@circulo.usa



@circulo.es