

Zazu hat



Created by Marcia Dallarosa
Size: 9.5" circumference/ 9" tall
Level: Intermediate

Material

Circulo yarns - Gorro kids
 1 ball color #9813 Zazu
 Knitting needles 10/6 mm
 Cable needle
 Tapestry needle
 Scissors and measuring tape.

Stitch glossary and abbreviations:

st/sts: stitches
 CO: cast on
 BO: bind off
 CN: cable needle
 rep: repeat
 mk: make
 dec: decreases
 inc: increases
 RS: right side
 WS: wrong side
 K: knit
 P: purl
 Chart 1 - 2x2 Rib st
 Chart 2 - Pattern

Disclaimer: Measurements are approximate due to differences between centimeters and inches, needle sizes, and tension. All care has been taken to allow accurate completion of the pattern. All care has been taken to ensure the accuracy of our patterns; the occasional error is inevitable though. We apologize for any inconvenience. Please if you find any error or have any questions about patterns send an email to: patternsupport@circulo.com.br

Gauge: 16 S x 18 R = 4"/10 cm over Pattern - chart 2 using needles 10.

CO 53 sts onto needles 10/6 mm. Start at the bottom. Work in 2x2 Rib st - chart 1 and rep sts up to 1.5". Inc 8 sts evenly spaced in the last row of rib = 62 sts. Follow Pattern - chart 2 and rep sts. At 8.25" start decreasing on the WS: p2tog 30x = 31 sts. Next row: k2tog 15x, end with k1 = 16 sts. Cut yarn with a tail, approx. 16". Insert this tail into tapestry needle and into these 16 sts, pull tightly, make a knot and then sew side (9"). Sew animal topper onto top as shown in the picture.

Chart 1 - 2x2 Rib st

Note: odd rows (RS)
 even rows (WS)

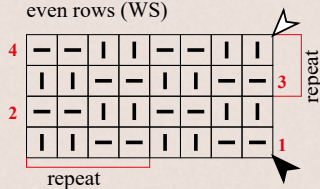
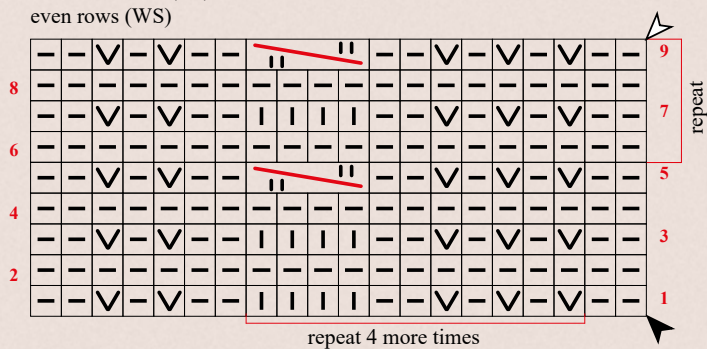
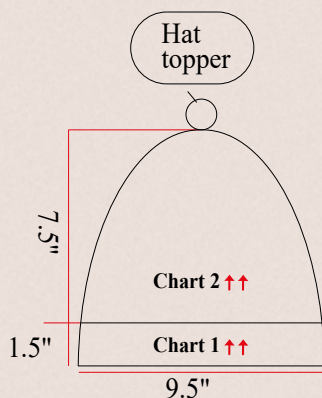


Chart 2 - Pattern

Note: odd rows (RS)
 even rows (WS)



Measurement chart



Stitch Key

□ knit □ purl ▽ Sl 1 with yarn in back (wyb)



2/2 LC - sl 2 sts onto cn, hold in front, k2, k2 from cn

▲ beginning △ end ↑↑ direction



CIRCULO

www.circuloyarns.com

  /circulo.usa